



**28 Jubilee Close, Blunham,
Bedfordshire MK44 3LZ**





A superbly presented and extended four double bedroom detached house nicely positioned within this attractive close of similar styled homes in this highly regarded Bedfordshire village ideally located with easy access to the A1, market towns and railway stations of Bedford, St Neots and Sandy.

The well-appointed accommodation with its high ceilings features a spacious and welcoming reception hall with Amtico flooring and good built in storage, a refitted cloakroom and a utility room. There is a separate, dual aspect sitting room complete with an attractive ornamental fireplace and doors to the rear garden plus a good sized study. The impressive kitchen/dining/family room is a wonderful open plan living space with a comprehensive range of quality fitted units and integrated appliances. It has a high vaulted ceiling, underfloor heating and bi-fold doors opening onto the private rear garden. On the first floor there are four well-proportioned double bedrooms, an ensuite and the family bathroom.

Externally there is an attractive open plan front garden and a driveway providing off road parking leading to the large, single garage. The fully enclosed south facing rear garden is 40 ft wide by 37 ft deep and has a well tended lawn with colourful, well stocked borders and a large patio area with lighting providing plenty of seating options.

An excellent family home in this popular village which is well served by the local school, village hall, the 12th century church, a village store, takeaway and a public house. Viewing is highly recommended.

- * **4 Double Bedrooms**
- * **Study**
- * **Refitted Cloakroom**
- * **Impressive Kitchen/Dining/Family Room**
- * **Ensuite**
- * **Gas Radiator Heating**
- * **Double Glazing**
- * **Utility Room**
- * **South Facing Garden**
- * **Utility Room**
- * **Sought After Village Location**

Freehold

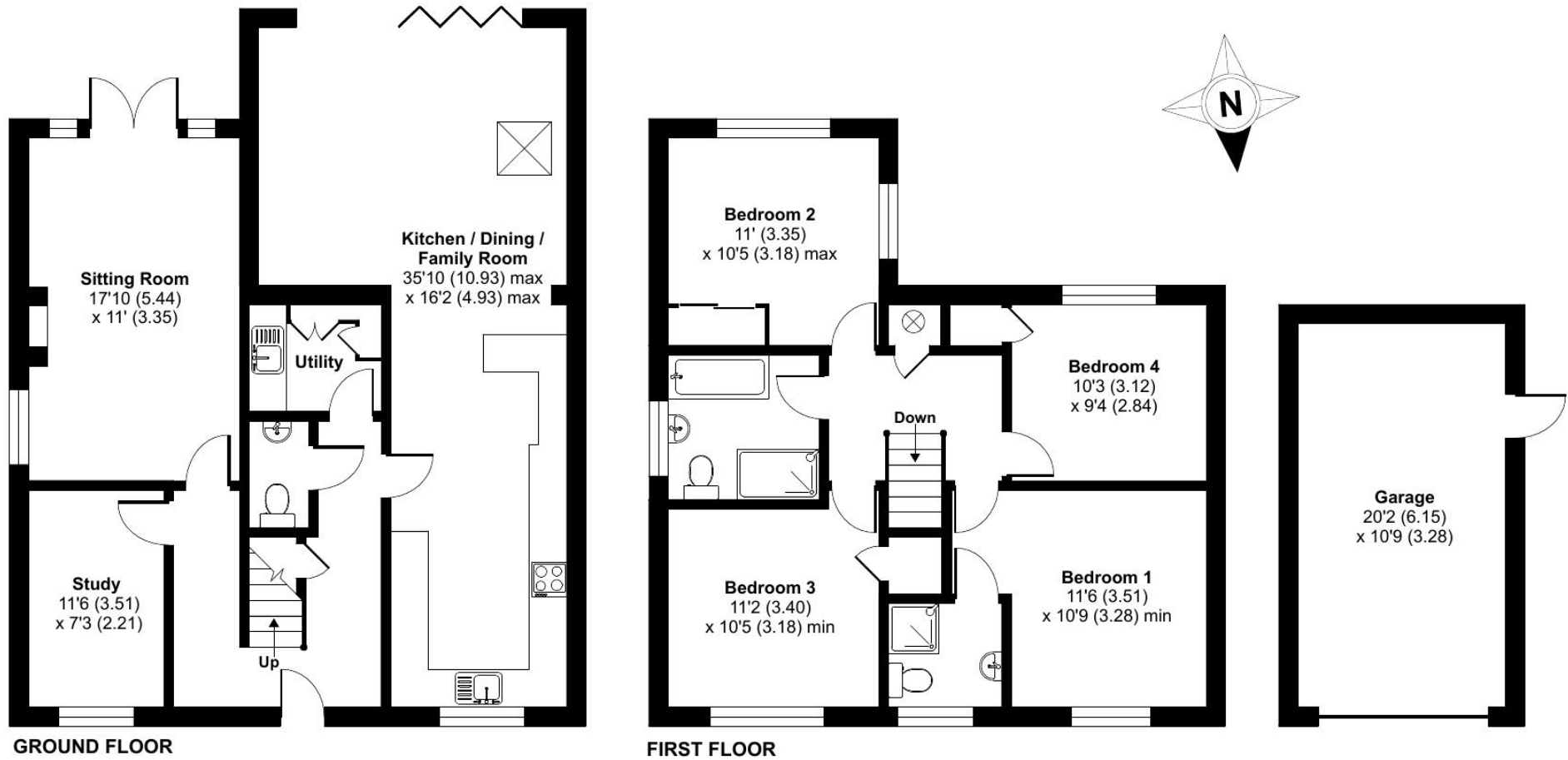


“Hassett House”, Hassett Street, Bedford MK40 1HA

www.taylorbrightwell.co.uk property@taylorbrightwell.co.uk

01234 326444

Money Laundering Regulations: Intending purchasers will be asked to produce identification documentation and we would ask for co-operation in order that there is no delay in agreeing a sale. Agents Notes: The agent has not tested any apparatus, equipment, fixtures & fittings or services and so cannot verify that they are in working order or fit for the purpose. A buyer is advised to obtain verification from their solicitor or surveyor. All photographs shown are for illustration purposes only and may depict items that are not for sale or included in the sale of the property. Please note that we have not checked the situation with regards to planning consents, building regulation consents and any other relevant consents relating to this property and therefore, any interested purchaser should carry out their own enquiries with the appropriate authorities. All measurements are approximate and for guidance only. The particulars do not form part of any contract and all properties are offered subject to contract. Neither Taylor Brightwell nor any of its employees or agents has any authority to make or give any representation or warranty whatsoever in relation to this property.



Approximate Area = 1661 sq ft / 154.3 sq m

Garage = 223 sq ft / 20.7 sq m

Total = 1884 sq ft / 175 sq m

For identification only - Not to scale



Floor plan produced in accordance with RICS Property Measurement Standards incorporating International Property Measurement Standards (IPMS2 Residential). © nitchecom 2024. Produced for Taylor Brightwell. REF: 1160149