



**Flat 8 54 Bushmead Avenue,
Bedford MK40 3QW**





A very spacious two double bedroom first floor apartment situated in one of Bedford's premier addresses within the Castle quarter. A short walk to The Embankment the town centre and with easy access to the mainline railway station.

The apartment features a superb sitting room with a large, impressive bay window, a fitted kitchen, the two double bedrooms with one having the potential to create an ensuite and the family bathroom.

The apartment is being sold with a share of the freehold and with no upward chain. The Service charge is currently £75 per month.

- * **2 Double Bedrooms**
- * **Large Sitting Room**
- * **Gas Radiator Heating**
- * **Share Of Freehold**
- * **Close To The Embankment**
- * **Access to Mainline Train Station**
- * **No Upward Chain**
- * **Viewing Highly Recommended**

Share Of Freehold

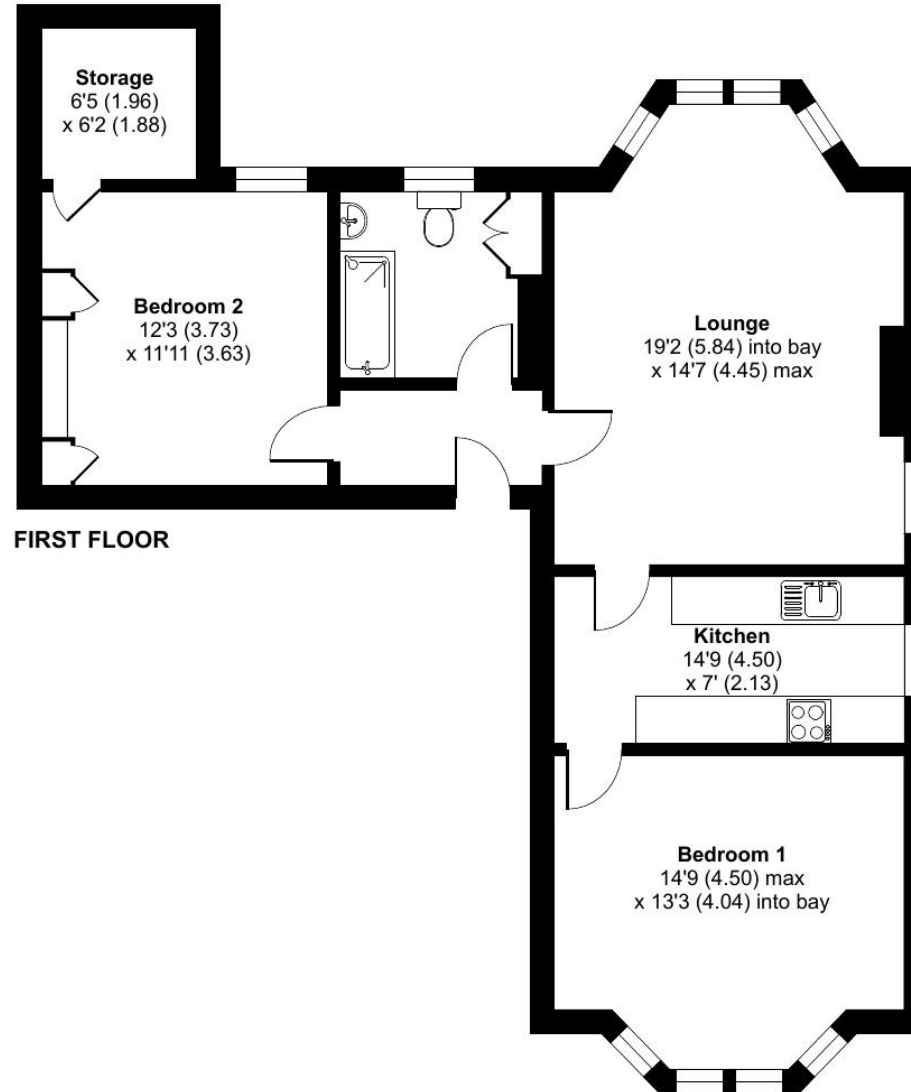


"Hassett House", Hassett Street, Bedford MK40 1HA

www.taylorbrightwell.co.uk property@taylorbrightwell.co.uk

01234 326444

Money Laundering Regulations: Intending purchasers will be asked to produce identification documentation and we would ask for co-operation in order that there is no delay in agreeing a sale. Agents Notes: The agent has not tested any apparatus, equipment, fixtures & fittings or services and so cannot verify that they are in working order or fit for the purpose. A buyer is advised to obtain verification from their solicitor or surveyor. All photographs shown are for illustration purposes only and may depict items that are not for sale or included in the sale of the property. Please note that we have not checked the situation with regards to planning consents, building regulation consents and any other relevant consents relating to this property and therefore, any interested purchaser should carry out their own enquiries with the appropriate authorities. All measurements are approximate and for guidance only. The particulars do not form part of any contract and all properties are offered subject to contract. Neither Taylor Brightwell nor any of its employees or agents has any authority to make or give any representation or warranty whatsoever in relation to this property.



Approximate Area = 858 sq ft / 79.7 sq m

For identification only - Not to scale



Floor plan produced in accordance with RICS Property Measurement Standards incorporating International Property Measurement Standards (IPMS2 Residential). © nitchecom 2024. Produced for Taylor Brightwell. REF: 1121623