

**WILKES  
GREEN  
HILL**

Residential  
Estate Agents  
Letting Agents

**32 Crocus Avenue, Penrith, Cumbria, CA11 8FE**



- **Spacious, Stylish and Efficient Modern Detached Family Home**
- **Desirable Residential Area on the Edge of Penrith**
- **Living Room and Large Open Plan Kitchen-Dining-Day Room + Cloakroom**
- **5 Bedrooms, En-Suite Shower Room + House Bathroom**
- **Off Road Parking for up to 4 Cars**
- **Integral Garage with Excellent Potential to Create Further Living Space**
- **Securely Enclosed Garden to the Rear**
- **uPVC Double Glazing + Gas Central Heating via a Condensing Boiler**
- **Tenure - Freehold. EPC Rate - B. Council Tax Band -**

**Price £425,000**

On the edge of Penrith in the highly successful Carleton Heights development, 32 Crocus Avenue is a smart, stylish, spacious, efficient and flexible family home with accommodation comprising: Entrance Hall, Living Room, Dining Kitchen Day Room, Cloakroom, Landing, 4 Double Bedrooms, En-Suite Shower Room, 5th Bedroom/Office and a House Bathroom. Outside there is Off Road Parking for up to 4 cars, an /integral Garage and to the rear is a generous and securely enclosed Garden. This wonderful family home also benefits from uPVC Double Glazing and Gas Central Heating via a Condensing Boiler combined with Modern Insulation giving and impressive EPC rate of B.

### **Location**

From the centre of Penrith, head South on King Street and fork left at the traffic lights into Roper Street which becomes Carleton Road. drive to the top of the hill and at the T-junction, turn left on the A686. Take the next left in to Carleton Hill Road, left in to Primrose Drive and then right to Crocus Avenue, left at the junction. drive up the rise and number 32 is on the right.

### **Amenities**

Penrith is a popular market town, having excellent transport links through the M6, A66, A6 and the main West coast railway line. There is a population of around 17,000 people and facilities include: infant, junior and secondary schools. There are 5 supermarkets and a good range of locally owned and national high street shops. Leisure facilities include: a leisure centre with; swimming pool, climbing wall, indoor bowling, badminton courts and a fitness centre as well as; golf, rugby and cricket clubs. There is also a 3 screen cinema and Penrith Playhouse. Penrith is known as the Gateway to the North Lakes and is conveniently situated for Ullswater and access to the fells, benefiting from the superb outdoor recreation opportunities.

### **Services**

Mains water, drainage, gas and electricity are connected to the property.

### **Tenure**

The property is freehold and the council tax is band E.

### **Viewing**

STRICTLY BY APPOINTMENT WITH WILKES-GREEN + HILL

## **ACCOMMODATION**

### **Entrance**

Through a composite security door to the;

### **Hall**

Stairs lead to the first floor with an oak handrail and painted spindles. The floor is ceramic tiled and there is a s single radiator, a built in coat cupboard and oak doors off.



**Living Room 15'9 x 11'3 (4.80m x 3.43m)**

There is an electric flame effect wall mounted fire, a double radiator, a TV point and an internet point. A uPVC double glazed window faces to the front.

**Dining Kitchen/Day Room 27'7 x 10'6 (8.41m x 3.20m)**

The kitchen area is fitted with gloss white fronted units and a quartz work surface incorporating a stainless steel 1 1/2 bowl stainless steel sink with a carved drainer. There are two built in electric ovens and a five ring gas hob with a quartz splashback and stainless steel extractor hood. There is an integral fridge freezer and dishwasher. Over the kitchen area are recessed downlights.



The flooring is ceramic tiled and there is a wooden column radiator, panelling to the end wall and a wall mount point for a TV. A uPVC double glazed window and two pairs of uPVC double glazed double doors open onto the rear garden.



### **Cloakroom**

Fitted with a toilet, a wash hand basin and having a single radiator and an extractor fan.



### **First Floor-Landing**

A ceiling trap gives access over the insulated roof space and there is a recessed wardrobe. Oak doors lead off.



### **Bedroom One 14'8 x 11'2 (4.47m x 3.40m)**

A uPVC double glazed window faces to the front and there is a single radiator, a TV point. An oak door opens to the;



### **En-Suite 6'x 6'4 (1.83mx 1.93m)**

Fitted with a toilet, a wash basin and a large shower enclosure, tiled to three sides with a two head mains fed shower over. The walls are fully tiled, the ceiling has recessed down lights and there is a chrome heated towel rail, an extractor fan and a uPVC double glazed window.



**Bedroom Two 11'10 x 10'2 (3.61m x 3.10m)**

A uPVC double glazed window faces to the rear and there is a single radiator and wall point for a TV.



**Bedroom Three 11'5 x 8'4 (3.48m x 2.54m)**

A uPVC double glazed window faces to the rear and there is a single radiator and wall point for a TV.



**Bedroom Four 9'3 x 11'10 (2.82m x 3.61m)**

Having a uPVC double glazed window to the front, a single radiator and wall point faces a TV and there is a recessed linen cupboard above the stairwell.



**Bedroom Five/Office 7'8 x 8'6 (2.34m x 2.59m)**

There is a single radiator, a wall point for a TV and uPVC double glazed window to the rear.

### **Bathroom 5'6 x 8'3 (1.68m x 2.51m)**

Fitted with a white toilet, wash basin and square enclosed bath with a mains fed two head shower over and a clear screen. The walls are fully tiled, the ceiling has recessed down lights and there is a chrome heated towel rail, an extractor fan and uPVC double glazed window to the side.



### **Outside**

A block paved forecourt gives off road parking for up to four vehicles and access to the;

### **Garage 17' x 8'9 (5.18m x 2.67m)**

Having an up and over door, light and power. A wall mounted "Ideal Logic" condensing combi boiler provides the hot water and central heating and there is plumbing for a washing machine. An internal door opens to the hall.

A path and a gate to the side of the house leads to the rear garden.

The rear garden is securely enclosed with a high fence and brick wall around.

There is a large flagged patio across the width of the house, a lawn and a further patio to one corner positioned for the evening summer sun.

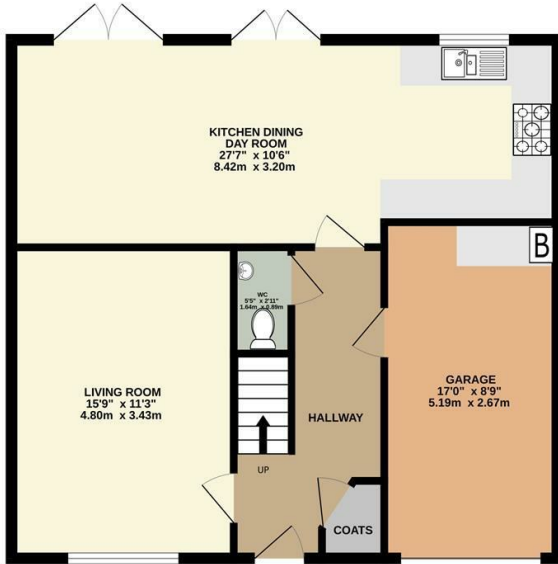


### **Referral Fee**

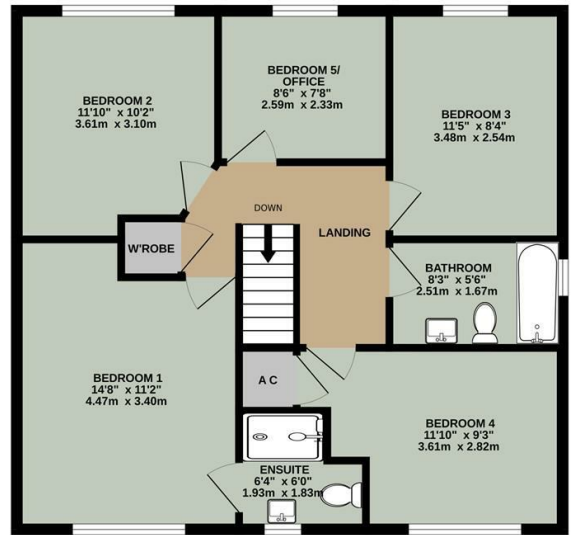
WGH work with the following provider for arrangement of mortgage & other products/insurances, however you are under no obligation to use their services and may wish to compare them against other

providers. Should you choose to utilise them WGH will receive a referral fee :  
The Right Advice (Bulman Pollard) Carlisle  
Average referral fee earned in 2024 was £253.00

GROUND FLOOR  
723 sq.ft. (67.2 sq.m.) approx.

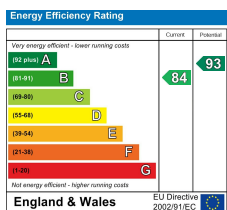


1ST FLOOR  
722 sq.ft. (67.1 sq.m.) approx.



TOTAL FLOOR AREA : 1445 sq.ft. (134.2 sq.m.) approx.

Whilst every attempt has been made to ensure the accuracy of the floorplan contained here, measurements of doors, windows, rooms and any other items are approximate and no responsibility is taken for any error, omission or mis-statement. This plan is for illustrative purposes only and should be used as such by any prospective purchaser. The services, systems and appliances shown have not been tested and no guarantee as to their operability or efficiency can be given.  
Made with Metropix ©2025



Email - [welcome@wilkesgreenhill.co.uk](mailto:welcome@wilkesgreenhill.co.uk)  
Visit our Website - [www.wilkesgreenhill.co.uk](http://www.wilkesgreenhill.co.uk)

#### Disclaimer

These particulars are set out as a general outline in accordance with the Property Misdescriptions Act (1991) only for the guidance of intending purchasers or lessees, and do not constitute any part of an offer or contract. Details are given without any responsibility, and any intending purchasers, lessees or third parties should not rely on them as statements or representations of fact, but must satisfy themselves by inspection or otherwise as to the correctness of each of them. We have not carried out a structural survey and the services, appliances and specific fittings have not been tested. All photographs, measurements, floor plans and distances referred to are given as a guide only and should not be relied upon for the purchase of carpets or any other fixtures or fittings. Gardens, roof terraces, balconies and communal gardens as well as tenure and lease details cannot have their accuracy guaranteed for intending purchasers. Lease details, service ground rent (where applicable) are given as a guide only and should be checked and confirmed by your solicitor prior to exchange of contracts. No person in the employment of Wilkes-Green + Hill Ltd has any authority to make any representation or warranty whatever in relation to this property. Purchase prices, rents or other prices quoted are correct at the date of publication and, unless otherwise stated, exclusive of VAT. Intending purchasers and lessees must satisfy themselves independently as to the incidence of VAT in respect of any transaction relating to this property.

#### Data Protection

We retain the copyright in all advertising material used to market this Property.

9 + 10 Angel Lane  
Penrith  
Cumbria  
CA11 7BP

T: 01768 867999  
F: 01768 895033  
[info@wilkesgreenhill.co.uk](mailto:info@wilkesgreenhill.co.uk)  
[www.wilkesgreenhill.co.uk](http://www.wilkesgreenhill.co.uk)

Registered in England and Wales No. 3210913  
Registered Office: 9 + 10 Angel Lane, Penrith

