

**WILKES
GREEN
HILL**

Residential
Estate Agents
Letting Agents

Copping Hill, Kirkby Thore, Penrith, CA10 1UA



- **Late Victorian Home in an Eden Valley Village Between Penrith and Appleby**
- **Living Room, Sitting Room and Dining Room**
- **Kitchen with Pantry and Large Conservatory**
- **4 Bedrooms, Bathroom and Shower Room**
- **Beautiful Gardens with Open Views and a High Level of Direct Sunlight**
- **Off Road Parking and Garage**
- **uPVC Double Glazing and Oil Central Heating**
- **Tenure - Freehold. Council Tax Band - B. EPC - C**

Price £410,000

In the Eden Valley village of Kirkby Thore, between Penrith and Appleby, Copping Hill is a fine, late Victorian house, originally built for the headmaster and offers generous, characterful and well maintained accommodation comprising: Central Hall, Living Room, Sitting Room, Dining Room, Kitchen with Pantry, a Conservatory, Landing, 4 Bedrooms, a Bathroom and a Shower Room. The house is set n beautiful well tended Gardens extending to an Orchard and benefiting from some lovely open views as well as a high level of direct sunlight.

Location

From Penrith, head East on the A66 and drive to Kirkby Thore. Turn left off the A66 onto Main Street, Copping Hill is approximately 200 metres on the left.

Amenities K.Thore

In the village of Kirkby Thore, there is an infant and primary school, a church, a village shop and sub post office and a café/restaurant. All main facilities are in Penrith, approximately 8.9 miles.

Penrith is a popular market town, having excellent transport links through the M6, A66, A6 and the main West coast railway line. There is a population of around 17,000 people and facilities include: infant, junior and secondary schools. There are 5 supermarkets and a good range of locally owned and national high street shops. Leisure facilities include: a leisure centre with; swimming pool, climbing wall, indoor bowling, badminton courts and a fitness centre as well as; golf, rugby and cricket clubs. There is also a 3 screen cinema and Penrith Playhouse. Penrith is known as the Gateway to the North Lakes and is conveniently situated for Ullswater and access to the fells, benefiting from the superb outdoor recreation opportunities.

Services

Mains water, drainage and electricity are connected to the property. Heating is by fuel oil.

Tenure Freehold

The property is freehold and the council tax is band B.

Viewing

STRICTLY BY APPOINTMENT WITH WILKES-GREEN + HILL

ACCOMMODATION

Entrance

Through a wood panel door to the;

Hall

With dark wood panelling, a single radiator and a telephone point. The stairs with wooden banister and spindles lead to the first floor. There is a recessed coat cupboard below the stairs and wood panel doors off.



Living Room 14'1 x 11'10 (4.29m x 3.61m)

An open fire grate is set on a tiled hearth and surround with a wooden mantel. uPVC double glazed windows face to the front and side. There is a double radiator and TV point.



Sitting Room 14'1 x 12' (4.29m x 3.66m)

An open fireplace is set on a slate hearth and surround with a wooden mantel. A uPVC double glazed window faces to the side.



Dining Room 13'1 x 13'4 (3.99m x 4.06m)

Having a living flame electric fire set on a fossil stone hearth with a stone surround and mantel. There is a double radiator, a uPVC double glazed window to the front and original recessed cupboard.



Kitchen 10'9 x 10'11 (3.28m x 3.33m)

Fitted with a range of shaker style wall and base units with a granite effect work surface incorporating a white ceramic single drainer sink with mixer tap. The kitchen is equipped with a Bosch ceramic hob with cooker hood above, a Hotpoint electric double oven with eye level grill, plumbing for a dishwasher and a double radiator. uPVC double glazed windows face the side and rear and an open door way gives access to a walk in pantry with light, shelving and space for a fridge freezer.

There is a wood panel ceiling with recessed spot lights and a wall cupboard housing the modern MCB consumer unit and electric meter. A uPVC double glazed door from the kitchen leads to the;



Conservatory 9'6 x 22'2 (2.90m x 6.76m)

Being a uPVC double glazed frame set on a dwarf wall with a polycarbonate roof. uPVC double glazed doors lead out to the garden. There is exposed stone to two walls, plumbing for a washing machine, telephone point and a double radiator. A Trianco oil fired boiler provides the hot water and central heating.



First Floor - Landing

There is a uPVC double glazed window to the half landing providing a good degree of natural light. From the main landing wood panel doors lead off and a ceiling trap with drop down ladder gives access to the roof space which is part board with light.



Bedroom One 14' x 11'10 (4.27m x 3.61m)

Having uPVC double glazed windows to the front and side with views to the side over the surrounding pastured land to the Lakeland fells. There is a double radiator.



Bedroom Two 14'2 x 12 (4.32m x 3.66m)

Having a uPVC double glazed window to the side with views over the surrounding pasture land to the Lakeland fells. There is a cast iron feature fireplace and a double radiator.



Bedroom Three 10'2 x 18'11 (3.10m x 5.77m)

Currently used as a study. Having a uPVC double glazed window to the front, telephone point and single radiator.



Bedroom Four 13'7 x 8'11 (4.14m x 2.72m)

Having a uPVC double glazed window to the front and a single radiator.



Bathroom 10' 10 x 6'9 (3.05m 3.05m x 2.06m)

Fitted with a pale coloured three piece suite and having a uPVC double glazed window to the rear, a wall mounted electric heater, a shaver socket and a chrome heated towel rail. The walls are part tiled and there is wood panelling to the ceiling. A built in airing cupboard house the hot water tank and shelves.



Shower Room

Fitted with toilet, a wash basin and a shower enclosure with waterproof boarding to three sides, a clear folding screen and electric shower. There is a wall mounted electric heater, a chrome heated towel rail and built in shelves.



Outside

The property is approached from the roadside through a pedestrian gate in a copper beech hedge to a sandstone path through a beautiful lawned garden with well stocked flower and shrub beds leading to the front door.



A flagged path runs across the front of the property and extends to the rear where metal gates provide vehicle access to the parking area and;

Garage

With up and over door, light and power and windows to the side.

To the rear of the garage is a log store and coal store.



The rear garden has the benefit of a good degree of privacy and the afternoon sun.

There is a patio area by the conservatory with outside tap raised shrub and flower beds between which sandstone steps lead to a lawn with pond, flower and shrub beds and a greenhouse.



Open arches in a wood trellis fence lead to a further garden area also to lawn with a stone paved seating area below a wooden pergola and a further flagged seating area closer to the house.

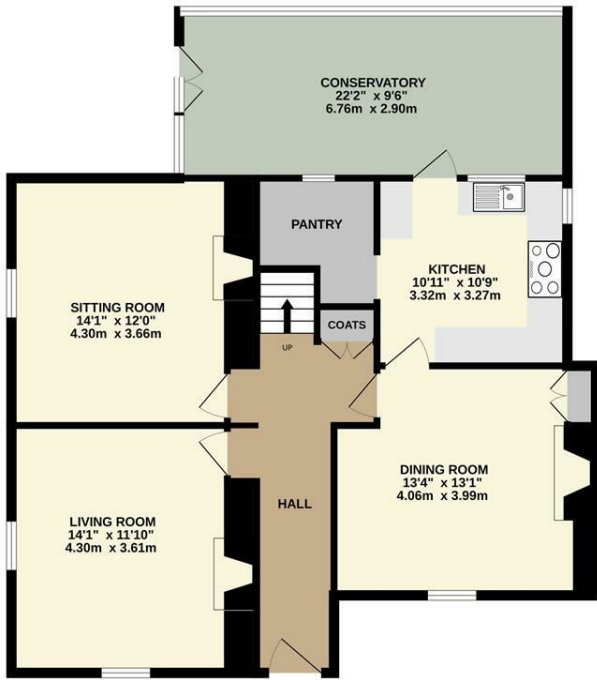


A metal gate in a stone wall with wooden arch over leads to the orchard with fruit trees , fruit beds and raised vegetable beds. The orchard has an open outlook across the surrounding pastureland. to the Pennines beyond.

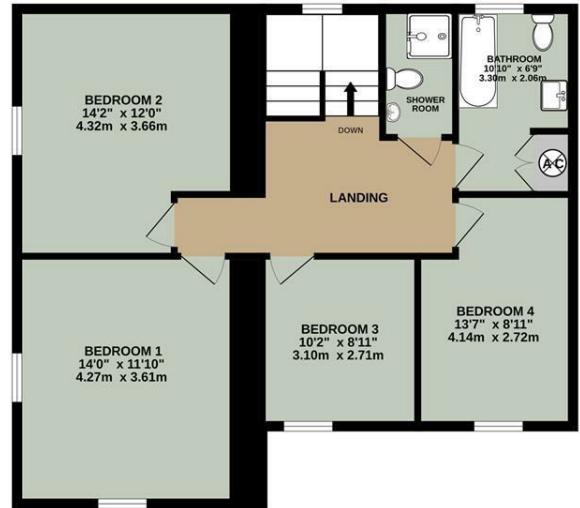
There is a stone flagged area with summer house/shed.



GROUND FLOOR
1015 sq.ft. (94.3 sq.m.) approx.

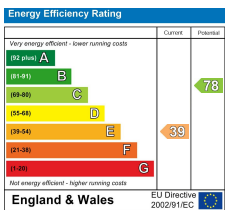


1ST FLOOR
776 sq.ft. (72.1 sq.m.) approx.



TOTAL FLOOR AREA : 1791 sq.ft. (166.4 sq.m.) approx.

Whilst every attempt has been made to ensure the accuracy of the floorplan contained here, measurements of doors, windows, rooms and any other items are approximate and no responsibility is taken for any error, omission or mis-statement. This plan is for illustrative purposes only and should be used as such by any prospective purchaser. The services, systems and appliances shown have not been tested and no guarantee as to their operability or efficiency can be given.
Made with Metropix ©2024



Email - welcome@wilkesgreenhill.co.uk
Visit our Website - www.wilkesgreenhill.co.uk

Disclaimer

These particulars are set out as a general outline in accordance with the Property Misdescriptions Act (1991) only for the guidance of intending purchasers or lessees, and do not constitute any part of an offer or contract. Details are given without any responsibility, and any intending purchasers, lessees or third parties should not rely on them as statements or representations of fact, but must satisfy themselves by inspection or otherwise as to the correctness of each of them. We have not carried out a structural survey and the services, appliances and specific fittings have not been tested. All photographs, measurements, floor plans and distances referred to are given as a guide only and should not be relied upon for the purchase of carpets or any other fixtures or fittings. Gardens, roof terraces, balconies and communal gardens as well as tenure and lease details cannot have their accuracy guaranteed for intending purchasers. Lease details, service ground rent (where applicable) are given as a guide only and should be checked and confirmed by your solicitor prior to exchange of contracts. No person in the employment of Wilkes-Green + Hill Ltd has any authority to make any representation or warranty whatever in relation to this property. Purchase prices, rents or other prices quoted are correct at the date of publication and, unless otherwise stated, exclusive of VAT. Intending purchasers and lessees must satisfy themselves independently as to the incidence of VAT in respect of any transaction relating to this property.

Data Protection

We retain the copyright in all advertising material used to market this Property.

9 + 10 Angel Lane
Penrith
Cumbria
CA11 7BP

T: 01768 867999
F: 01768 895033
info@wilkesgreenhill.co.uk
www.wilkesgreenhill.co.uk

Registered in England and Wales No. 3210913
Registered Office: 9 + 10 Angel Lane, Penrith

