


est 1979

 **Jeremy
Leaf & Co.**



Quayle Crescent, London

£385,000

- Bathroom
- 0.3 Miles to Tube Station
- Council Tax Band C
- One Bedroom
- Service Charge £194.28pm
- Concierge Service
- Allocated Underground Parking
- Ground Rent £300pa
- Open-Plan Kitchen/Reception
- Utility Room

863 High Road, London, N12 8PT
020 8446 4295

property@jeremyleaf.co.uk
<https://www.jeremyleaf.co.uk/>

Quayle Crescent, London, N20 0ER

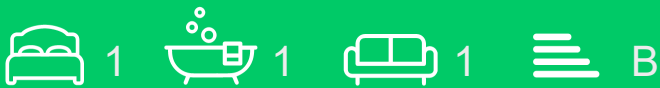
Charming one-bedroom flat located on Quayle Crescent. This property is part of a new development, offering modern living in a desirable area. A spacious open-plan kitchen and reception room, perfect for entertaining guests or enjoying a quiet evening at home.

The flat features a well-appointed bedroom and a stylish bathroom that meets all your needs. One of the standout features of this property is the lovely balcony, where you can enjoy fresh air and views of the surrounding area.

For added convenience, this flat includes a utility room and also allocated underground parking.

Situated just 100 feet from local shops, you will have everything you need right at your doorstep. Furthermore, the property is only 0.3 miles from Totteridge, providing easy access to transport links and additional amenities.

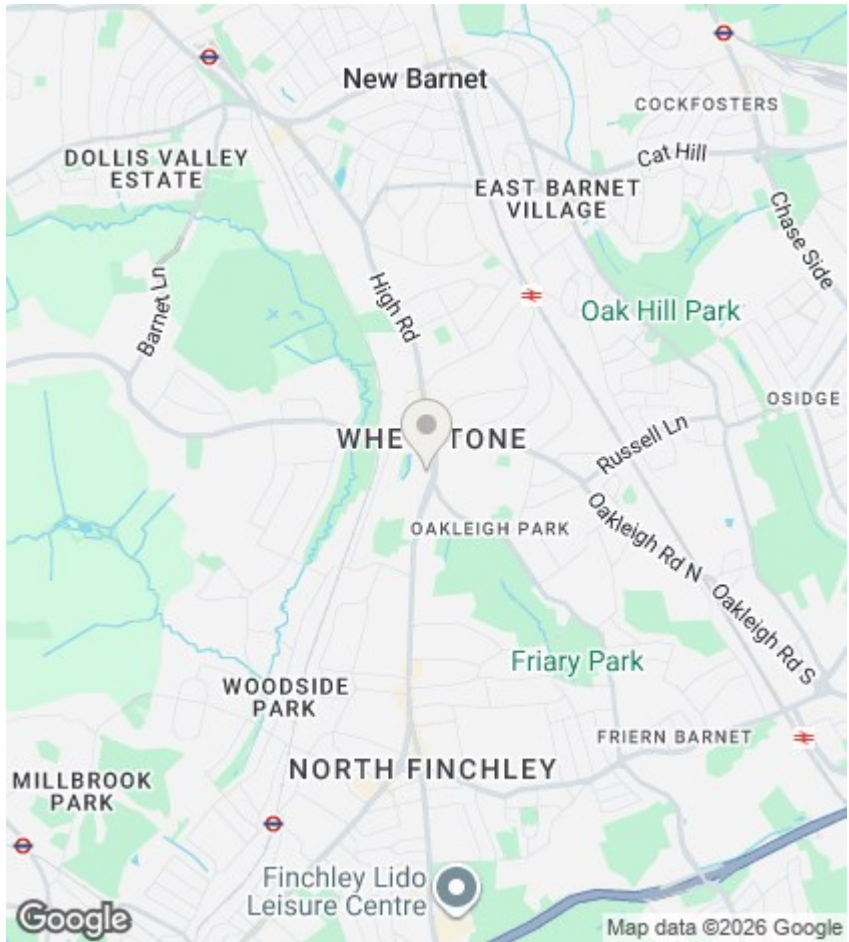
This flat is an excellent opportunity for first-time buyers or those looking to invest in a prime London location. With its modern features and convenient amenities, it is sure to appeal to a wide range of buyers. Don't miss your chance to make this delightful property your new home.



Council Tax Band: C







Directions

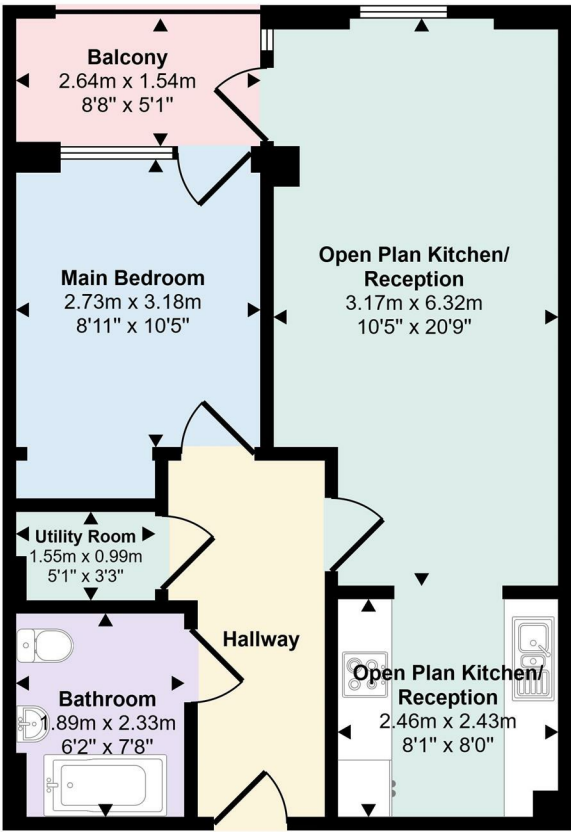
Viewings

Viewings by arrangement only. Call 020 8446 4295 to make an appointment.

EPC Rating:

B

Energy Efficiency Rating		
	Current	Potential
Very energy efficient - lower running costs		
(92 plus) A		
(81-91) B	84	84
(69-80) C		
(55-68) D		
(39-54) E		
(21-38) F		
(1-20) G		
Not energy efficient - higher running costs		
England & Wales	EU Directive 2002/91/EC	



Floorplan