



Nestled in the sought-after residential area of Balmoral Close, Chippenham, this modern semi-detached house offers a delightful blend of comfort and convenience. With three well-proportioned bedrooms, this property is ideal for families or those seeking extra space. The good-sized lounge and dining room provide a welcoming atmosphere, perfect for both relaxation and entertaining guests.

The property boasts two bathrooms, including an en suite attached to the main bedroom, ensuring privacy and ease for the household. The thoughtful layout enhances the living experience, making it both functional and inviting.

For those with vehicles, the property includes parking, along with a garage, providing ample space for storage.

This home is not just a place to live; it is situated in a popular area of Chippenham, known for its community spirit and accessibility to local amenities. Whether you are looking for a family home or a comfortable retreat, this spacious three-bedroom semi-detached property is sure to meet your needs. Don't miss the opportunity to make this charming house your new home.

Viewing

Viewings Strictly by appointment with the sole selling agents Atwell Martin call or e-mail us today to confirm your appointment | 65 New Road, Chippenham, Wiltshire SN15 1ES

Situation - Chippenham

Chippenham has a wide range of amenities to include High Street retailers plus supermarkets and retail parks and, in addition, there is a leisure centre with indoor swimming pool, library, cinema and public parks. Chippenham also benefits from excellent schooling with numerous primary and three highly sought after secondary schools. For those wishing to commute there is also a regular main line rail service from Chippenham station to London (Paddington) and

the West Country and the M4 motorway is easily accessed via Junction 17 a few miles north of the town.

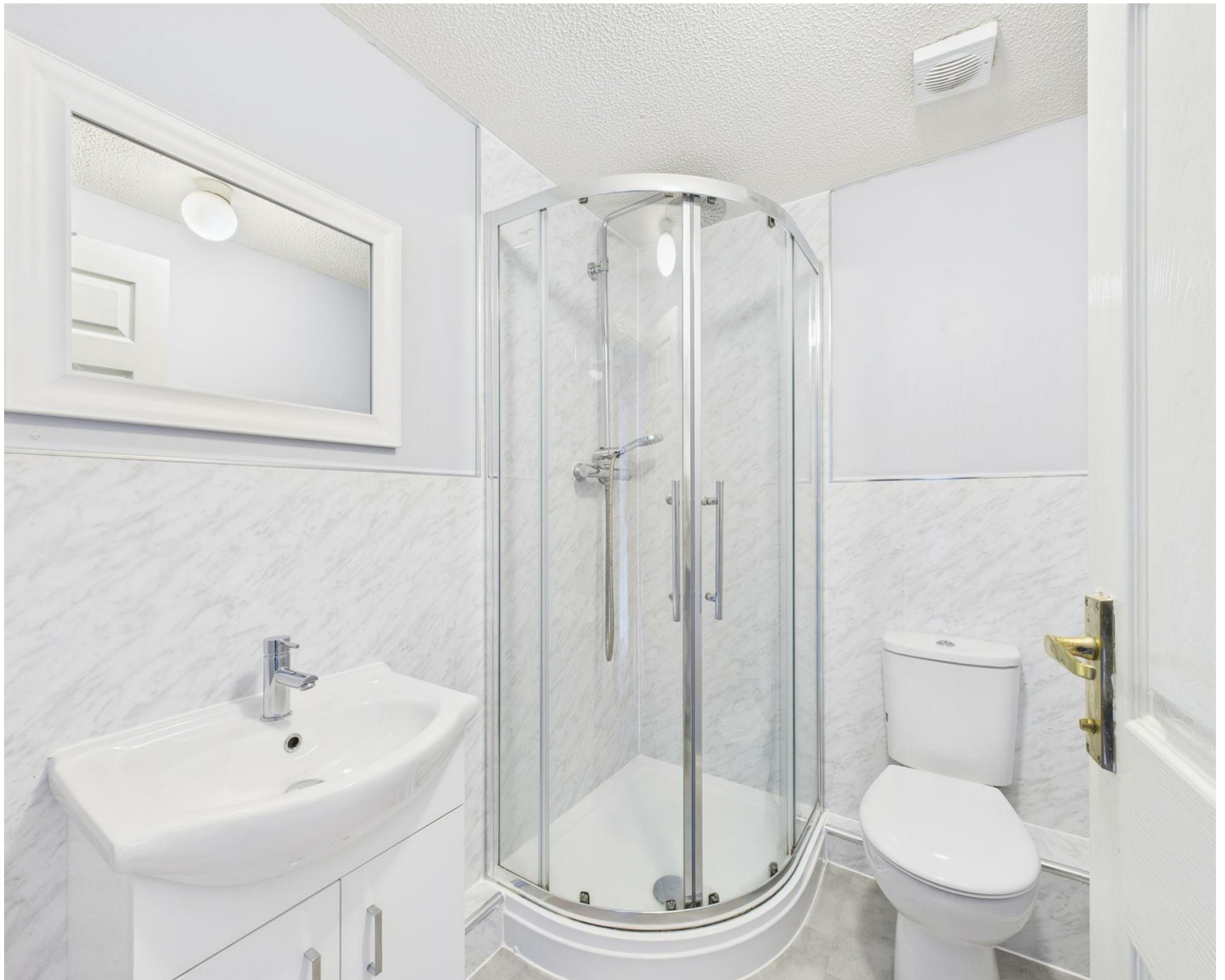
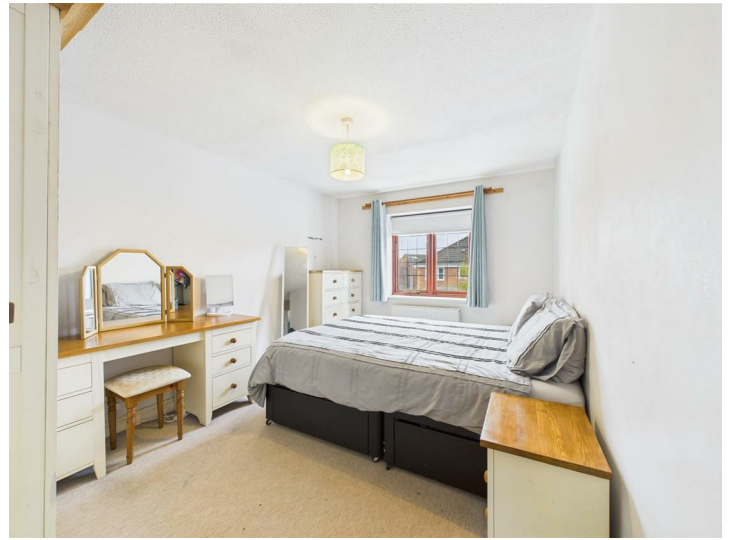
Property Information

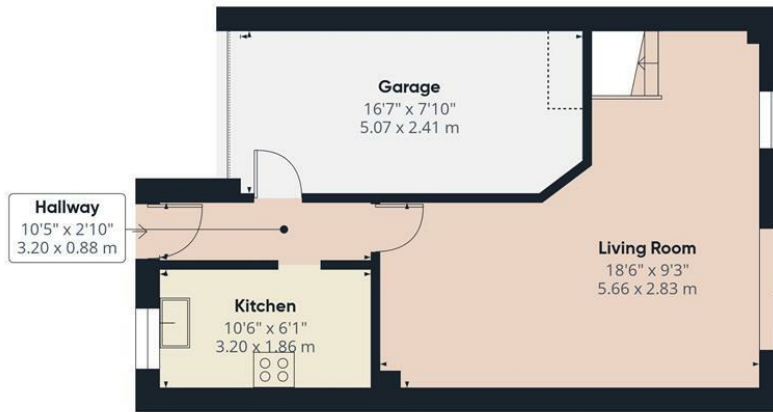
Utilities/Services - Mains Electric, Water & Drainage, Gas Central Heating

Wiltshire Council Tax - Band C

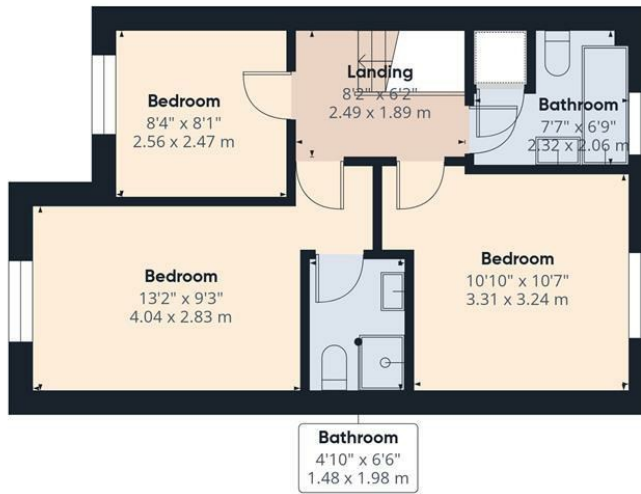
Tenure - Freehold







Ground Floor



First Floor

Approximate total area⁽¹⁾

912 ft²
84.7 m²

Reduced headroom

5 ft²
0.5 m²

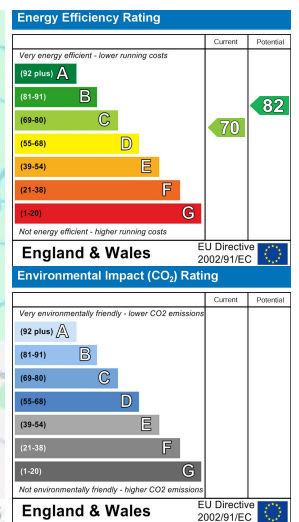
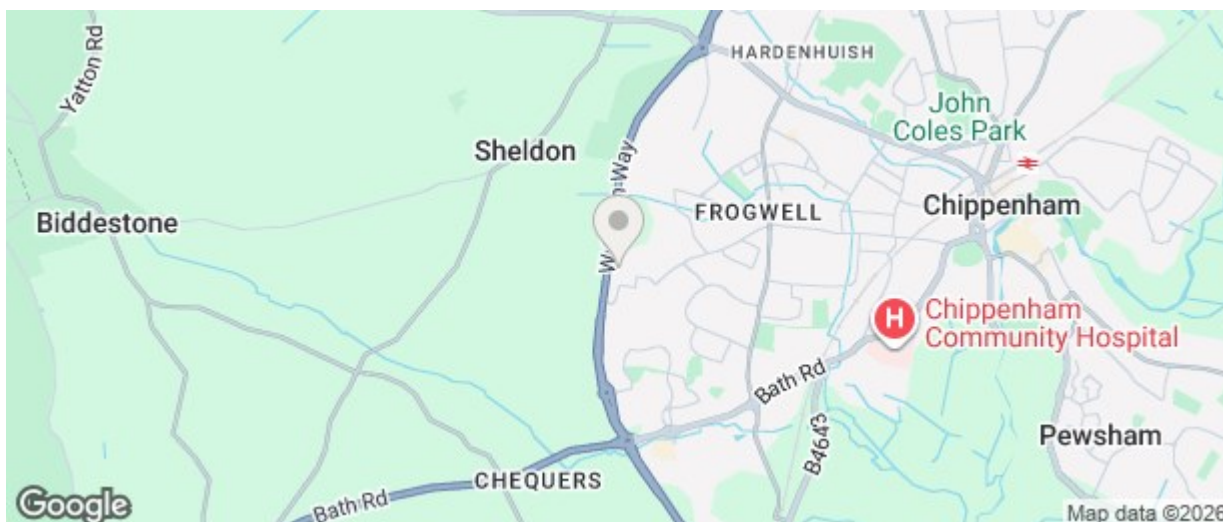
(1) Excluding balconies and terraces

Reduced headroom

Below 5 ft/1.5 m

Calculations reference the RICS IPMS 3C standard. Measurements are approximate and not to scale. This floor plan is intended for illustration only.

GIRAFFE360



The particulars are set out as a general outline only for the guidance of intended purchasers or lessees, and do not constitute, any part of a contract. Nothing in these particulars shall be deemed to be a statement that the property is in good structural condition or otherwise nor that any of the services, appliances, equipment or facilities are in good working order. Purchasers should satisfy themselves of this prior to purchasing