





An ideally situated three bedroom family home set in a lovely cul-de-sac on the central/western side of town. The property is within easy reach of schools, shops and commuter links and is offered with No Onward Chain. The accommodation briefly comprises; entrance porch, sitting room and kitchen/dining room to rear. The first floor provides; landing area, three bedrooms and family bathroom. Externally there are front & rear gardens, off road driveway parking and a single garage situated in a block near the property. There is a virtual tour to view now online and internal viewings are highly recommended to fully appreciate all this home has to offer.

### Viewing

Viewings Strictly by appointment with the sole selling agents Atwell Martin call or e-mail us today to confirm your appointment | 65 New Road, Chippenham, Wiltshire SN15 1ES

### Situation - Stonelea Close

Stonelea Close is a popular cul-de-sac on the central/western side of town. It's an ideal location for schools and commuting and is built around a "Village Green" theme. Chippenham itself has a wide range of amenities to include High Street retailers plus supermarkets and retail parks and, in addition, there is a leisure centre with indoor swimming pool, library, cinema and public parks. Chippenham also benefits from excellent schooling with numerous primary and three highly sought after

secondary schools. For those wishing to commute there is also a regular main line rail service from Chippenham station to London (Paddington) and the West Country and the M4 motorway is easily accessed via Junction 17 a few miles north of the town.

### Property Information

Utilities/Services - Mains Electric, Water & Drainage, Gas Central Heating

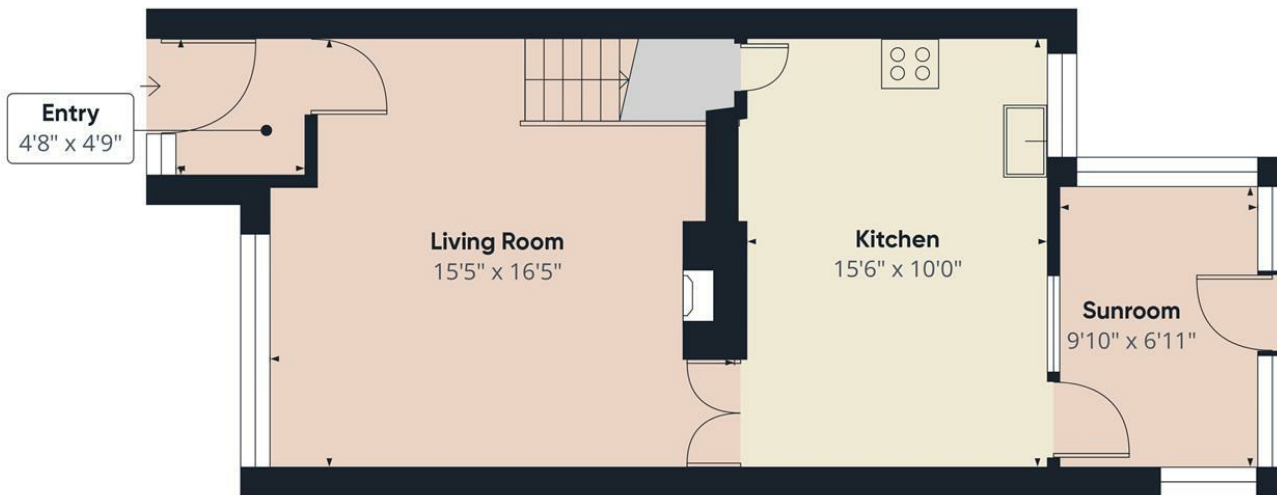
Wiltshire Council Tax - Band C

Tenure - Freehold

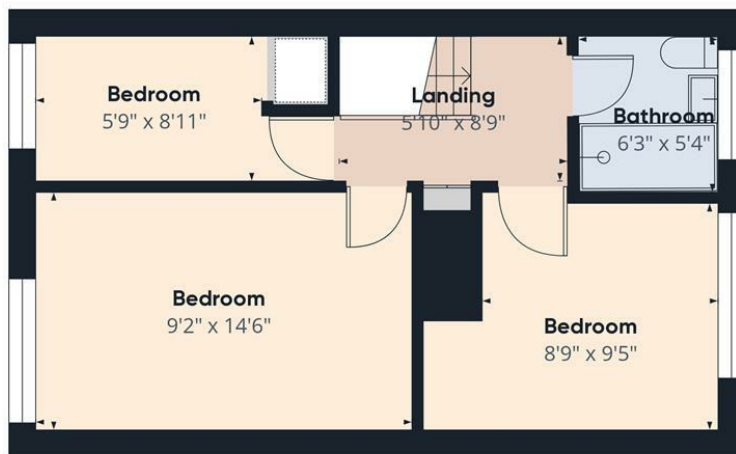








Ground Floor



Floor 1



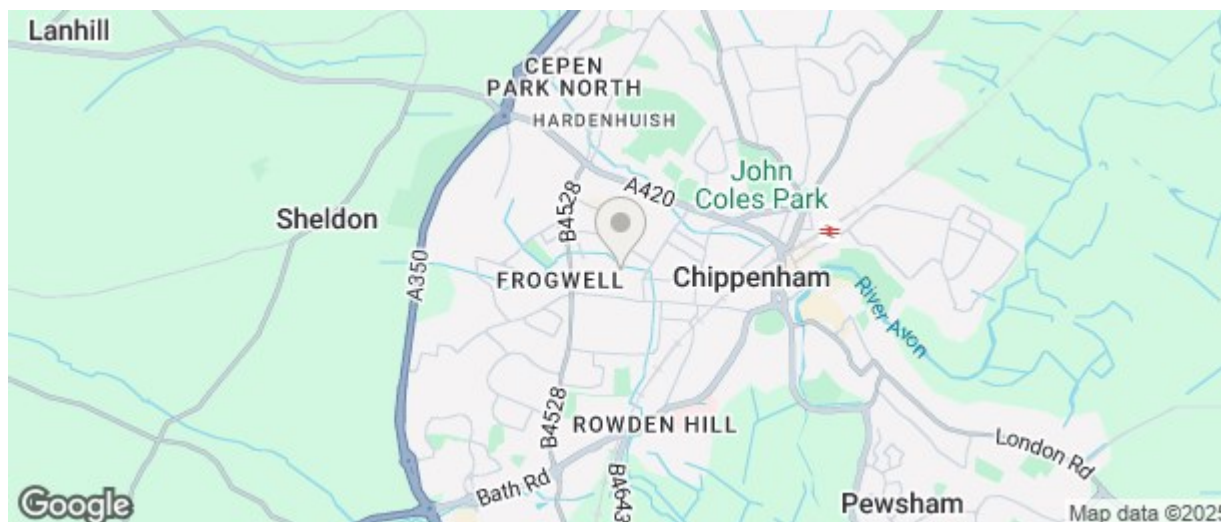
**Approximate total area<sup>®</sup>**  
858.22 ft<sup>2</sup>


(1) Excluding balconies and terraces.

While every attempt has been made to ensure accuracy, all measurements are approximate, not to scale. This floor plan is for illustrative purposes only.

Calculations are based on RICS IPMS 3C standard.

GIRAFFE360



Energy Efficiency Rating		Current	Potential
Very energy efficient - lower running costs			
(92 plus) <b>A</b>			<b>83</b>
(81-91) <b>B</b>			
(69-80) <b>C</b>			
(55-68) <b>D</b>		<b>64</b>	
(39-54) <b>E</b>			
(21-38) <b>F</b>			
(1-20) <b>G</b>			
Not energy efficient - higher running costs			
<b>England &amp; Wales</b>		EU Directive 2002/91/EC	
<b>Environmental Impact (CO<sub>2</sub>) Rating</b>			
		Current	Potential
Very environmentally friendly - lower CO <sub>2</sub> emissions			
(92 plus) <b>A</b>			
(81-91) <b>B</b>			
(69-80) <b>C</b>			
(55-68) <b>D</b>			
(39-54) <b>E</b>			
(21-38) <b>F</b>			
(1-20) <b>G</b>			
Not environmentally friendly - higher CO <sub>2</sub> emissions			
<b>England &amp; Wales</b>		EU Directive 2002/91/EC	

The particulars are set out as a general outline only for the guidance of intended purchasers or lessees, and do not constitute, any part of a contract. Nothing in these particulars shall be deemed to be a statement that the property is in good structural condition or otherwise nor that any of the services, appliances, equipment or facilities are in good working order. Purchasers should satisfy themselves of this prior to purchasing