



Birkdale Drive

Ifield, Crawley, RH11 0TS

Guide Price £230,000 Leasehold

GUIDE PRICE £230,000 - £240,000

PEPPERCORN RENT - 999 YEARS ON LEASE- £1 ANNUAL SERVICE CHARGE

Welcome to this charming 2-bedroom ground floor maisonette located in the lovely area of Ifield, Crawley. This property boasts a private rear garden, perfect for enjoying a cup of tea on a sunny afternoon.

As you step inside, you'll be greeted by a well-presented interior with 1 reception room, ideal for entertaining guests or simply relaxing after a long day. The modern shower room adds a touch of luxury to this cosy home.

Convenience is key with allocated parking spaces, ensuring you never have to worry about finding a spot after a busy day out. Whether you're a first-time buyer or looking to downsize, this property offers a comfortable and stylish living space.

Don't miss the opportunity to make this maisonette your own and enjoy the peaceful surroundings of Ifield. Book a viewing today and step into your new home!

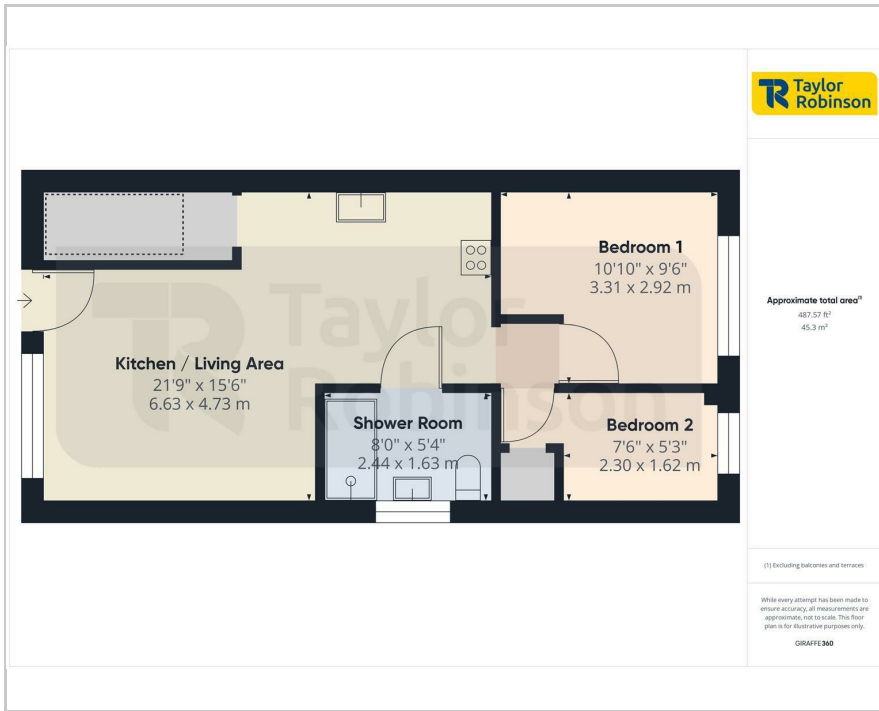
Viewing

Please contact our Taylor Robinson Office on 01293 552388 if you wish to arrange a viewing appointment for this property or require further information.

- GUIDE PRICE £230,000 - £240,000
- 999 YEARS REMAINING ON THE LEASE
- 2 Bedroom Ground Floor Maisonette
- Well Presented
- Private Rear Garden
- Shower Room
- Allocated Parking Space
- Open Planned Living/ Kitchen Area
- PEPPERCORN RENT
- £1 ANNUAL SERVICE CHARGE



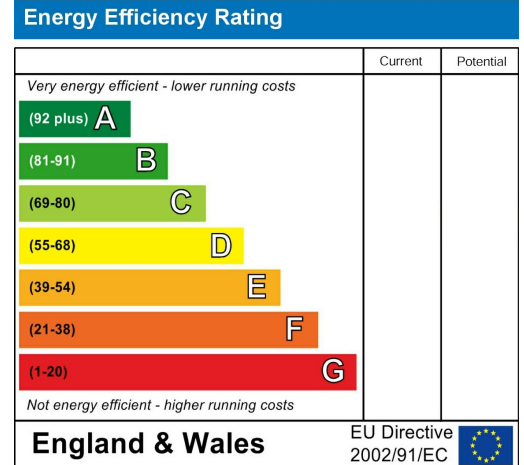
Floor Plan



Area Map



Energy Efficiency Graph



Council Tax Band: B



These particulars, whilst believed to be accurate are set out as a general outline only for guidance and do not constitute any part of an offer or contract. Intending purchasers should not rely on them as statements of representation of fact, but must satisfy themselves by inspection or otherwise as to their accuracy. No person in this firm's employment has the authority to make or give any representation or warranty in respect of the property.