

Total area: approx. 43.8 sq. metres (471.2 sq. feet)

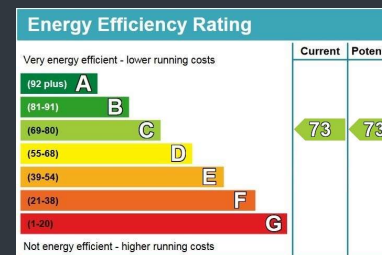


Flat 3, 88 Bullar Road

£150,000 Leasehold

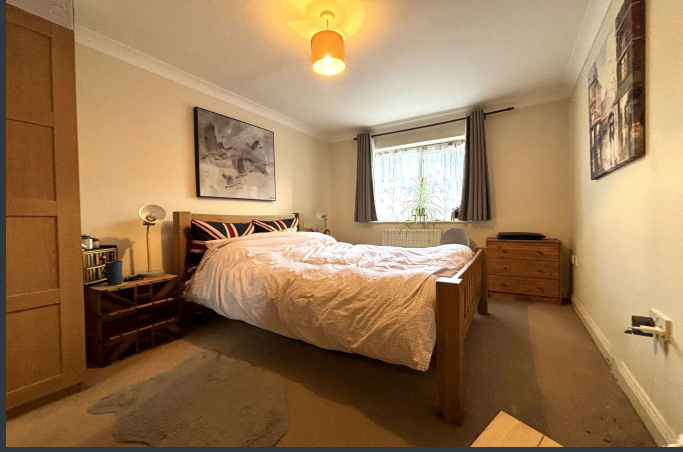
Southampton, Hampshire SO18 1GU

A spacious first floor one bedroom flat in a small block in Bitterne Park. Close to amenities and with excellent public transport links, this is an ideal purchase for a first time buyer or an investor. Entrance hall with large storage cupboard, spacious living/dining room with juliet balcony, modern fitted kitchen, bathroom and large double bedroom. There is allocated parking for one car, as well as visitor parking & a communal garden. The development benefits from low charges and 108 years remaining on the lease £75 per month service charges and annual ground rent of £170.



IMPORTANT: We would like to inform prospective purchasers that these sales particulars have been prepared as a general guide only. A detailed survey has not been carried out, nor the services, appliances and fittings tested. Room sizes should not be relied upon for furnishing purposes and are approximate. If floorplans are included they are for guidance and illustration purposes only and may not be to scale. If there are any important matters likely to affect your decision to buy, please contact us before viewing the property.





Overview

- FIRST FLOOR FLAT
- ONE DOUBLE BEDROOM
- LARGE LIVING/DINING ROOM WITH JULIET BALCONY
- MODERN FITTED KITCHEN
- ALLOCATED PARKING
- LOW CHARGES
- 108 YEARS REMAINING ON LEASE
- CONVENIENT LOCATION CLOSE TO AMENITIES AND PUBLIC TRANSPORT LINKS

