



Belfast Street, Hove, BN3 3YS
£750,000 - £775,000 Guide Price



**GOLDIN
LEMCKE**

01273 777123
GOLDINLEMCKE.COM

SELLING HOMES
IN BRIGHTON
& HOVE
SINCE 2002

Belfast Street, Hove, BN3 3YS

£750,000 - £775,000 Guide Price

An exceptionally spacious four-bedroom Victorian terraced house with an attractive west-facing rear garden, situated in this extremely sought-after location close to a wide range of amenities.





Further Information

This bay-fronted home offers light and well-proportioned accommodation arranged over three floors and has been improved and extended to create a comfortable family house. The ground floor features an entrance hall, spacious living/dining room with east-facing bay window, cloakroom, and a superb large kitchen/breakfast room with bi-fold doors opening directly onto the rear garden.

On the first floor there are two double bedrooms and a generous family bathroom, while the loft has been converted to provide two further bedrooms, including a main bedroom with en suite shower room.

A particular highlight is the enclosed west-facing rear garden, which enjoys plenty of afternoon and evening sun.

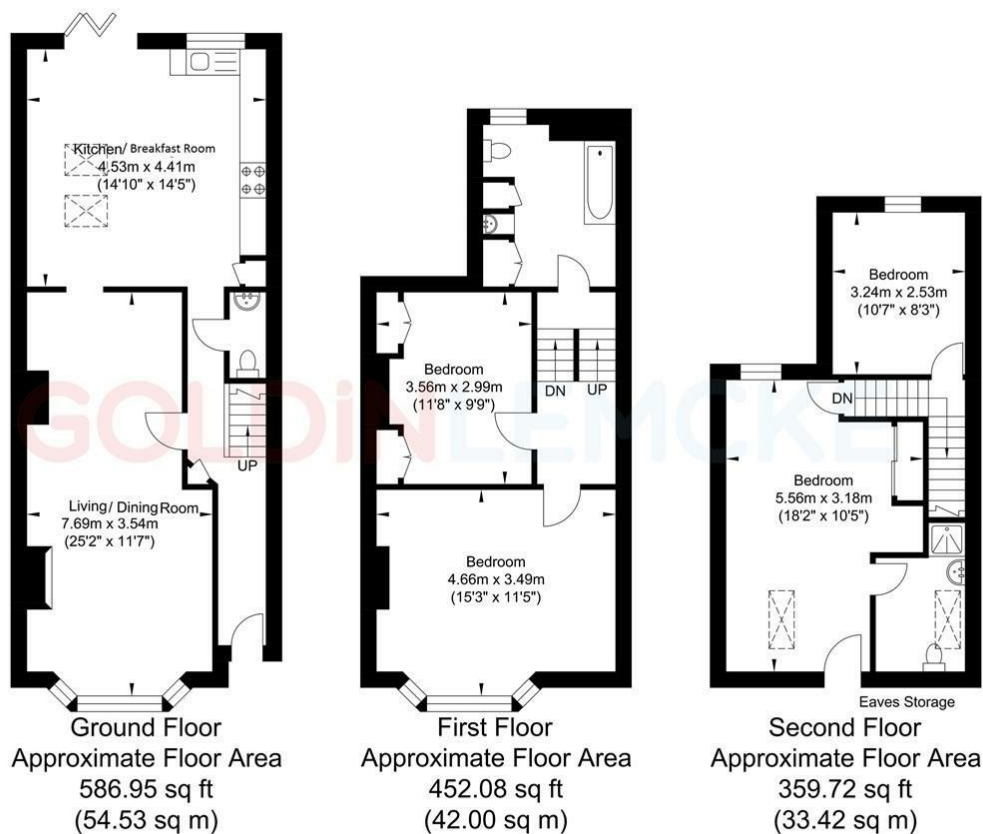
Belfast Street sits in a popular central part of Hove, well placed for everyday amenities and easy connections. Hove seafront is within comfortable walking distance, as are the shops, cafés and restaurants of Church Road and George Street. Hove mainline station is close by, making it a practical choice for commuters, with several well-regarded local schools also nearby - ideal for commuters and families alike.



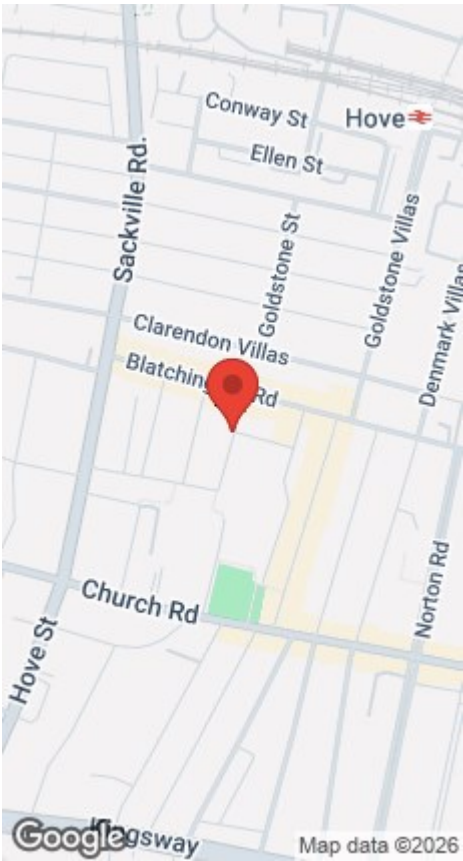
GOLDINLEMCKE

01273 777123
GOLDINLEMCKE.COM

Belfast Street, Hove



Approximate Gross Internal Area = 129.95 sq m / 1398.77 sq ft
Illustration for identification purposed only, measurements are approximate, not to scale.
Copyright GDImpact 2019



GOLDIN LEMCKE
01273 777123
GOLDINLEMCKE.COM

SELLING SOMETHING SIMILAR?

Get in touch for a free, no obligation valuation.
Call 01273 777123 or email property@goldinlemcke.com

The above information has been provided by the vendor in good faith, but will need verification by the purchaser's solicitor. Any areas, measurements or distances referred to are given as a guide only and are not precise. Floor plans are not drawn to scale and are provided only to help illustrate the general layout of the property. The mention of any appliances and/or services in this description does not imply that they are in full and efficient working order and prospective purchasers should make their own investigations before finalising any agreement to purchase. It should not be assumed that any contents, furnishings or other items shown in photographs (which may have been taken with a wide angle lens) are included in the sale. Any reference to alterations to, or use of, any part of the property is not a statement that the necessary planning, building regulations, listed buildings or other consents have been obtained. We endeavour to make our details accurate and reliable, but they should not be relied on as statements or representations of fact and they do not constitute any part of an offer or contract. The seller does not give any warranty in relation to the property and we have no authority to do so on their behalf.

Energy Efficiency Rating		
	Current	Potential
Very energy efficient - lower running costs		
(92 plus) A		
(81-91) B		
(69-80) C		
(55-68) D		
(39-54) E		
(21-38) F		
(1-20) G		
Not energy efficient - higher running costs		
England & Wales	EU Directive 2002/91/EC	

SELLING HOMES
IN BRIGHTON
& HOVE
SINCE 2002