



The Drive, Hove, BN3 3PG
£995,000



**GOLDIN
LEMCKE**

01273 777123
GOLDINLEMCKE.COM

SELLING HOMES
IN BRIGHTON
& HOVE
SINCE 2002

The Drive, Hove, BN3 3PG

£995,000

A wonderfully presented duplex five-bedroom maisonette, occupying the third and fourth (top) floors of this stunning grade II listed building. Complete with two parking spaces and accommodation spanning over 2170 sq ft, this spectacular property is a rare find and early and internal viewing is essential.





Further Information

The property occupies the top two (third and fourth) floors of this truly spectacular grade II listed detached house, with excellently maintained communal hallways with impressive stained-glass windows. The accommodation itself comprises on the third floor a large lounge, separate fitted kitchen/breakfast room, dining room/second reception room, large bedroom with en suite bathroom, cloakroom, and a boot room/home office. Stairs to the second floor of the property lead to an impressive sized landing with built-in window seat and plenty of space for furniture. From here, there are three large double bedrooms all benefitting from en suites, and a further bedroom currently arranged as a study. The first level features two ornamental balconies, and the property comes with two parking spaces. Additional perks include loft storage, tall ceilings, elegant cornicing, and stunning panelled sash windows. Additionally, the property is offered for sale with a share of freehold and a newly extended 998 year lease.

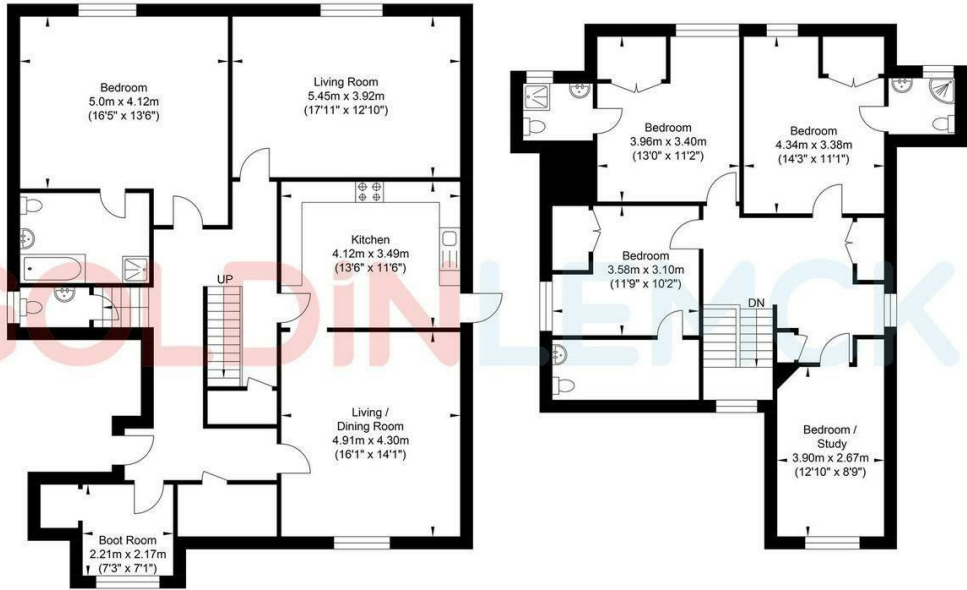


Situated in central Hove, The Drive boasts a convenient position just a short walk away from Hove Station and many bus stops with regular buses into central Brighton and beyond. There are also many bars, shops and restaurants nearby, as well as Hove seafront. Properties in this location are extremely sought-after and early and internal viewing is highly recommend to truly appreciate the qualities of this fantastic maisonette.

GOLDIN LEMCKE

01273 777123
GOLDINLEMCKE.COM

The Drive



Second Floor
Approximate Floor Area
1312.44 sq ft
(121.93 sq m)

Third Floor
Approximate Floor Area
864.01 sq ft
(80.27 sq m)

Approximate Gross Internal Area = 202.2 sq m / 2177 sq ft
Illustration for identification purposed only, measurements are approximate, not to scale.




GOLDIN
LEMCKE

01273 777123
GOLDINLEMCKE.COM

SELLING SOMETHING SIMILAR?

Get in touch for a free, no obligation valuation.
Call 01273 777123 or email property@goldinlemcke.com

The above information has been provided by the vendor in good faith, but will need verification by the purchaser's solicitor. Any areas, measurements or distances referred to are given as a guide only and are not precise. Floor plans are not drawn to scale and are provided only to help illustrate the general layout of the property. The mention of any appliances and/or services in this description does not imply that they are in full and efficient working order and prospective purchasers should make their own investigations before finalising any agreement to purchase. It should not be assumed that any contents, furnishings or other items shown in photographs (which may have been taken with a wide angle lens) are included in the sale. Any reference to alterations to, or use of, any part of the property is not a statement that the necessary planning, building regulations, listed buildings or other consents have been obtained. We endeavour to make our details accurate and reliable, but they should not be relied on as statements or representations of fact and they do not constitute any part of an offer or contract. The seller does not give any warranty in relation to the property and we have no authority to do so on their behalf.

Energy Efficiency Rating		
	Current	Potential
Very energy efficient - lower running costs		
(92 plus) A		79
(81-91) B		
(69-80) C		
(55-68) D		
(39-54) E		
(21-38) F	54	
(1-20) G		
Not energy efficient - higher running costs		
England & Wales		EU Directive 2002/91/EC 

SELLING HOMES
IN BRIGHTON
& HOVE
SINCE 2002