



Stirling Place, Hove, BN3 3YU
£650,000 - £700,000 Guide



**GOLDIN
LEMCKE**

01273 777123
GOLDINLEMCKE.COM

SELLING HOMES
IN BRIGHTON
& HOVE
SINCE 2002

Stirling Place, Hove, BN3 3YU

£650,000 - £700,000 Guide

A fantastic three-bedroom period terraced property, situated in this extremely central and sought-after location. We cannot stress enough that early and internal inspection is highly recommended to truly appreciate the full quality of this amazing house.





Further Information

Spanning three floors, the ground level boasts a spacious entrance hall, a large living room with original shutters and a feature fireplace, a cloakroom, and an excellent sized kitchen/breakfast room. The kitchen includes a south-facing window, ample storage with matching wall and base units, and another period fireplace.

On the first floor, there is a family bathroom and two double bedrooms, each retaining original fireplaces. The second floor comprises a stunning master bedroom, complete with both north and south-facing views, engineered oak flooring, exposed brick chimney, and a luxurious en suite shower room. Further to this, double doors open to a south-facing Juliet balcony boasting fantastic views.

Stirling Place is a quiet, well-located residential area close to both the seafront and the city center. It offers a mix of period homes and modern properties, with easy access to local amenities like cafes, shops, and restaurants along Church Road. The area is well-connected, with Hove station offering direct links to Brighton and London, making it ideal for professionals and families alike.

Please note that this property does not have any outdoor space.



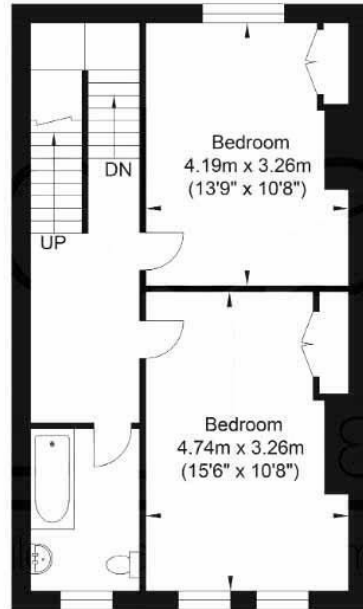
GOLDINLEMCKE

01273 777123
GOLDINLEMCKE.COM

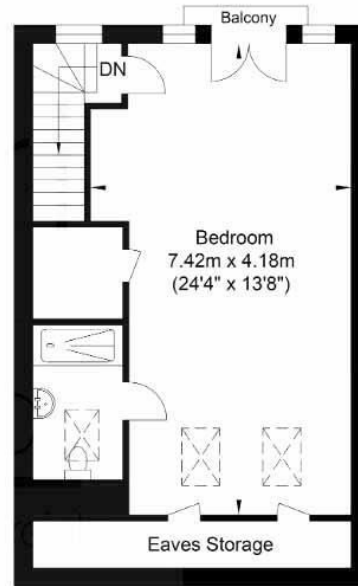
Stirling Place



Ground Floor
Approximate Floor Area
499.44 sq ft
(46.40 sq m)



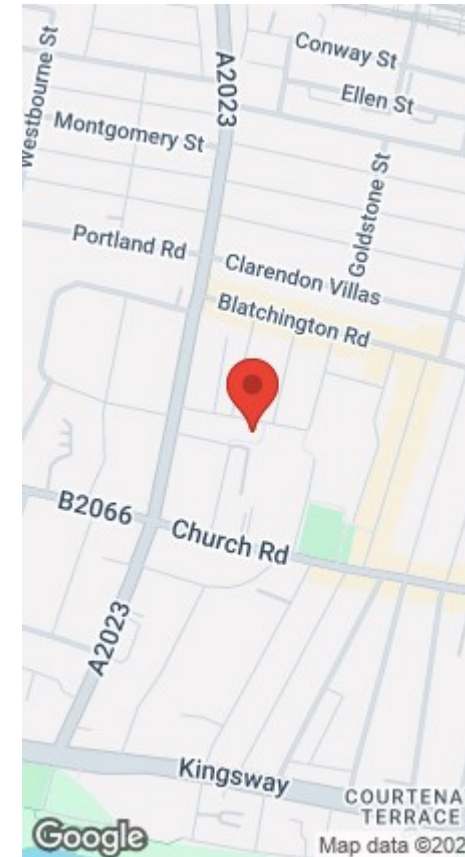
First Floor
Approximate Floor Area
470.38 sq ft
(43.70 sq m)



Second Floor
Approximate Floor Area
438.09 sq ft
(40.70 sq m)

Approximate Gross Internal Area = 130.80 sq m / 1407.91 sq ft

Illustration for identification purposes only, measurements are approximate, not to scale.



SELLING SOMETHING SIMILAR?

Get in touch for a free, no obligation valuation.

Call 01273 777123 or email property@goldinlemcke.com

The above information has been provided by the vendor in good faith, but will need verification by the purchaser's solicitor. Any areas, measurements or distances referred to are given as a guide only and are not precise. Floor plans are not drawn to scale and are provided only to help illustrate the general layout of the property. The mention of any appliances and/or services in this description does not imply that they are in full and efficient working order and prospective purchasers should make their own investigations before finalising any agreement to purchase. It should not be assumed that any contents, furnishings or other items shown in photographs (which may have been taken with a wide angle lens) are included in the sale. Any reference to alterations to, or use of, any part of the property is not a statement that the necessary planning, building regulations, listed buildings or other consents have been obtained. We endeavour to make our details accurate and reliable, but they should not be relied on as statements or representations of fact and they do not constitute any part of an offer or contract. The seller does not give any warranty in relation to the property and we have no authority to do so on their behalf.

Energy Efficiency Rating		
	Current	Potential
Very energy efficient - lower running costs		
(92 plus) A		
(81-91) B		
(69-80) C		
(55-68) D		
(39-54) E		
(21-38) F		
(1-20) G		
Not energy efficient - higher running costs		
England & Wales	EU Directive 2002/91/EC	



GOLDIN LEMCKE

01273 777123
GOLDINLEMCKE.COM

SELLING HOMES
IN BRIGHTON
& HOVE
SINCE 2002