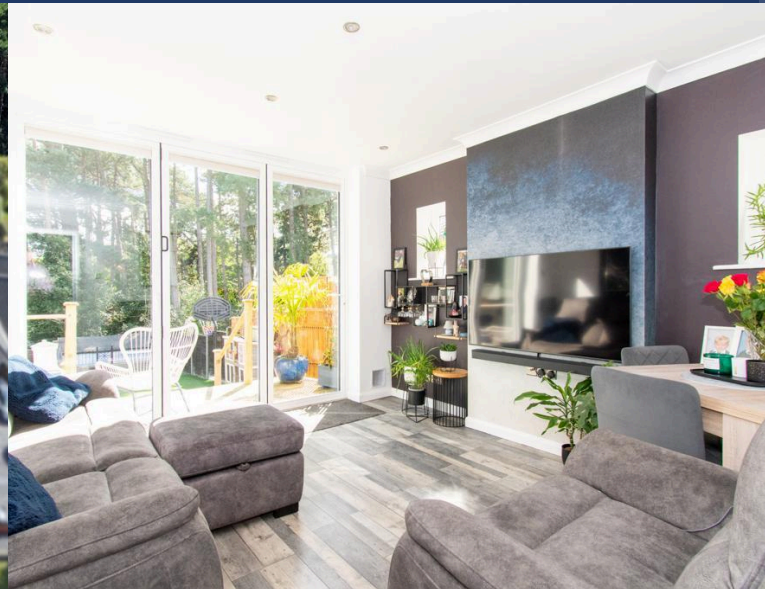
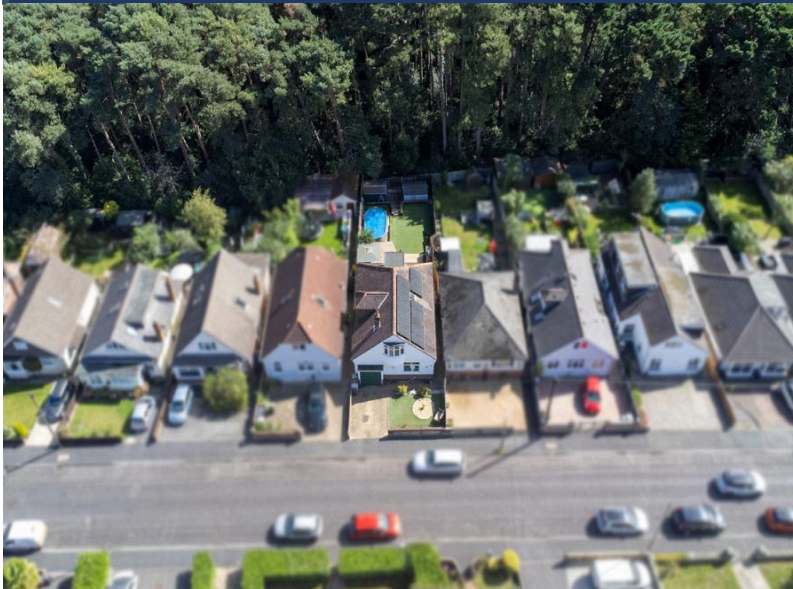




£500,000



Pine Vale Crescent,
Bournemouth, Dorset
3 Bedrooms, Detached



www.clarkesproperties.co.uk

3 / 4 DOUBLE BEDROOMS CONTEMPORARY KITCHEN with INTEGRATED APPLIANCES INTEGRAL GARAGE OFF ROAD PARKING STUNNING GARDEN backing onto REDHILL PARK WOODS. TWO BATHROOMS