



Mill Hill, Newmarket, CB8 0JB

CHEFFINS

Mill Hill

Newmarket,
CB8 0JB

A semi-detached 2 bedroom period cottage close to the centre of Newmarket and within walking distance of the town centre. The property offers well proportioned accommodation and has period features including an open fireplace with wood burning stove. NO CHAIN.

LOCATION

NEWMARKET is a thriving market town and the centre of the horse racing industry. There are excellent shopping facilities, numerous schools, a sports centre, swimming pool and theatre. Cambridge and Bury St Edmunds are easily accessible via the A14 or rail.

2 1 1

Guide Price £190,000





SITTING/DINING ROOM

with entrance door, 2 sash windows to the front, built-in storage cupboard, mock beams to walls and ceiling, stairs to first floor, open fireplace with brick surround and wood burning stove.

KITCHEN

with a range of base and wall mounted units with work surfaces over, butler sink with mixer tap, electric hob and oven, wall mounted gas boiler.



BATHROOM

with a low level WC, wall mounted hand wash basin, panelled bath with shower over, tiled surround, heated towel rail.



FIRST FLOOR

LANDING

BEDROOM 1

with wooden floor boards, access to loft space.

BEDROOM 2

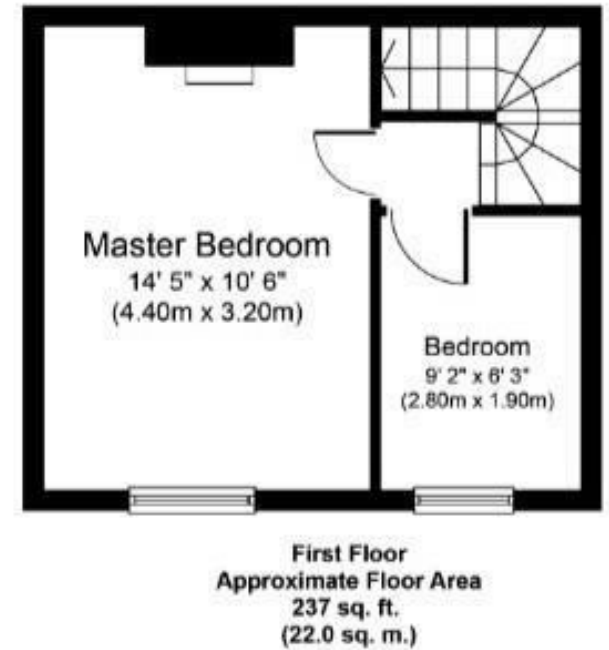
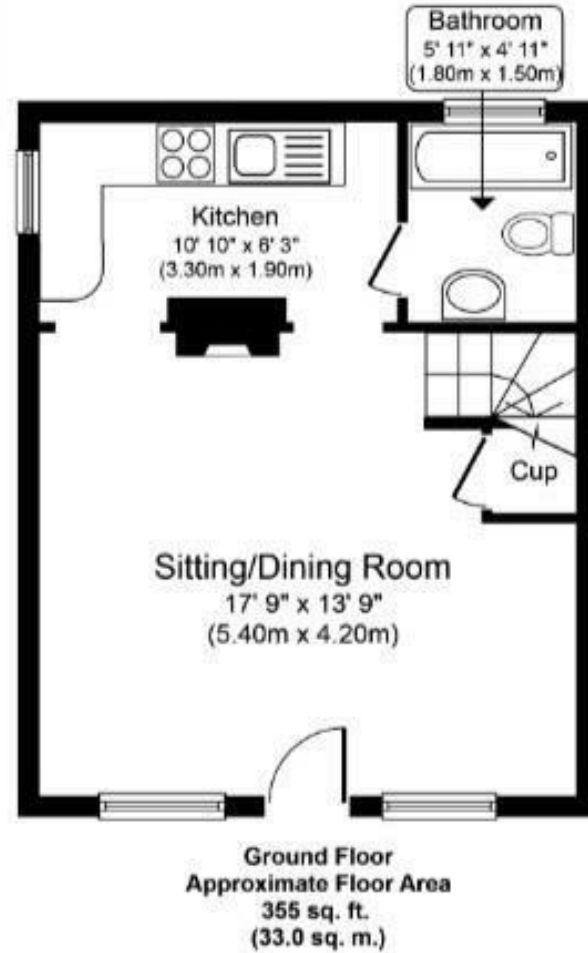
Sales Agents Notes

For more information on this property, please refer to the Material Information Brochure on our website.



Energy Efficiency Rating		
	Current	Potential
Very energy efficient - lower running costs		
(92 plus) A		86
(81-91) B		
(69-80) C		
(55-68) D		
(39-54) E		
(21-38) F	61	
(1-20) G		
Not energy efficient - higher running costs		
EU Directive 2002/91/EC		
England & Wales		

Guide Price £190,000
 Tenure - Freehold
 Council Tax Band - B
 Local Authority - West Suffolk



Black Bear Court High Street, Newmarket, CB8 9AF | 01638 663228 | cheffins.co.uk



CHEFFINS

IMPORTANT: we would like to inform prospective purchasers that these sales particulars have been prepared as a general guide only. A detailed survey has not been carried out, nor the services, appliances and fittings tested. Room sizes should not be relied upon for furnishing purposes and are approximate. If floor plans are included, they are for guidance only and illustration purposes only and may not be to scale. If there are any important matters likely to affect your decision to buy, please contact us before viewing the property.