



sparks ellison

23 Shaftesbury Avenue, Chandler's Ford, SO53 3BR

£435,000

A delightful 1920's detached bungalow pleasantly situated towards the southern end of Chandler's Ford. A particularly attractive feature of this home is the rear garden which measures approximately 100' x 49' with the bungalow itself providing good accommodation that would benefit from some updating and modernisation. Subject to the normal consents the property could also lend itself to a first-floor extension to create a substantial family house. The convenient location is within walking distance to bus services to Southampton and Winchester and easy access can be gained to the centre of Chandler's Ford together with the M3 and M27 motorway links.

ACCOMMODATION

Entrance Hall:

Sitting Room:

15'8" x 14'3" x 12'6" (4.78m x 4.34m x 3.81m) Double doors to rear garden, fireplace with electric fire, step up to dining room.

Dining Room:

11'6" x 10' (3.51m x 3.05m)

Kitchen:

12'10" x 11'4" (3.91m x 3.45m) (Maximum) Range of units, gas oven and hob with extractor hood over, integrated fridge/freezer, boiler, tiled floor, airing cupboard, door to rear garden:

Bedroom 1:

12'7" x 11'7" (3.84m x 3.53m) Built in wardrobes.

En-Suite:

5'10" x 5'2" (1.78m x 1.57m) Wet room style with shower area.

Bedroom 2:

13' x 10' (3.96m x 3.05m)

Bedroom 3:

9'4" x 8'9" (2.84m x 2.67m)

Cloakroom:

6'2" x 5'5" (1.88m x 1.65m) Suite comprising wash basin, wc, hatch to loft space.

OUTSIDE

Front:

To the front and side of the property is a driveway that affords off street parking and leads to the garage and rear garden. The remainder of the front garden is lawned and enclosed by hedging.

Rear Garden:

A particularly attractive feature of the property measuring approximately 100' x 49' encompassing a large lawned area surrounded by planted borders and enclosed by fencing.

Garage:

20' x 10' (6.10m x 3.05m)

OTHER INFORMATION

Tenure:

Feehold

Approximate Age:

Circa 1920's

Approximate Area:

954sqft/88.6sqm

Sellers Position:

No forward chain

Heating:

Gas central heating

Windows:

UPVC double glazing

Loft Space:

Partially boarded with light connected

Infant/Junior School:

Fryern Infant/Junior School

Secondary School:

Toynbee Secondary School

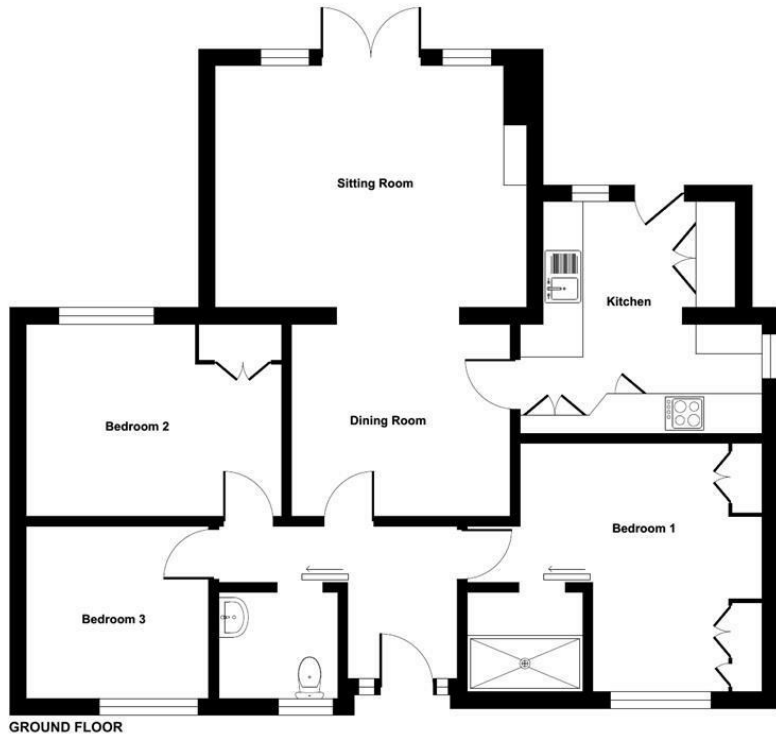
Local Council:

Eastleigh Borough Council - 02380 688000

Council Tax:

Band D

Ground Floor = 954 sq ft / 88.6 sq m
For identification only - Not to scale



GROUND FLOOR

Floor plan produced in accordance with RICS Property Measurement 2nd Edition, Incorporating International Property Measurement Standards (IPMS2 Residential). © ritchcom 2024. Produced for Sparks Ellison. REF: 1218968



Energy Efficiency Rating		Current	Potential
Very energy efficient - lower running costs			
(92 plus) A			
(81-91) B			84
(69-80) C		63	
(55-68) D			
(39-54) E			
(21-38) F			
(1-20) G			
Not energy efficient - higher running costs			
England & Wales		EU Directive 2002/91/EC	

94 Winchester Road, Chandler's Ford, Hampshire, SO53 2GJ

Sales: t: 02380 255333 e: property@sparksellison.co.uk

Lettings: t: 02380 018518 e: lettings@sparksellison.co.uk



While we endeavour to make our sales particulars fair, accurate and reliable, they are only a general guide to the property and, accordingly, if there is any point which is of particular importance to you please contact the office and we will be pleased to check it for you, especially if you are contemplating travelling some distance to view the property. These approximate room sizes are only intended as general guidance. You must verify the dimensions carefully before ordering carpets or any built in furniture. Please note we have not tested the services or any of the equipment or appliances in this property, accordingly we strongly advise prospective buyers to commission their own survey or service report before finalising their offer to purchase. These particulars are issued in good faith but do not constitute representations of fact or form part of any offer or contract. The matters referred to in these particulars should be independently verified by prospective buyers or tenants. Neither Sparks Ellison nor any of its employees or agents has any authority to make or give any representation or warranty whatever in relation to this property. Your home is at risk if you do not keep up repayments on a mortgage or other loan secured on it. Written quotations available on request. All loans secured on property. Life assurance usually required.

