



21 Ashdown Road, Chandler's Ford, SO53 5RB

£220,000

A two bedroom ground floor maisonette conveniently situated within walking distance to a range of shops on Ashdown Road and Hiltingbury Road together with Hiltingbury Schools, Community Centre, and Leisure Centre. The property is offered for sale with no forward chain and also benefits from a garage to the rear.

ACCOMMODATION

Entrance Porch:

Front door to reception hall, storage cupboard.

Sitting Room:

15'10" x 10'10" (3.83m x 3.30m) Display shelving.

Kitchen:

Range of units, space and plumbing for appliances.

Bedroom 1:

12'4" x 10'8" (3.76m x 3.25m)

Bedroom 2:

11'4" x 9'10" (3.45m x 3.00m)

Shower Room:

Suite comprising shower cubicle, wash basin, wc.

OUTSIDE

Communal gardens to the rear.

Garage:

A single garage is situated behind the property.

OTHER INFORMATION

Tenure:

Leasehold

Term of Lease:

999 years from July 2008

Ground Rent:

£10.00 Annually

Maintenance:

£20.00 per month

Approximate Age:

1960's

Approximate Area:

659sqft/61.2sqm

Sellers Position:

No forward chain

Heating:

Electric storage heaters

Windows:

UPVC double glazed windows

Infant/Junior School:

Hiltingbury Infant/Junior School

Secondary School:

Thornden Secondary School

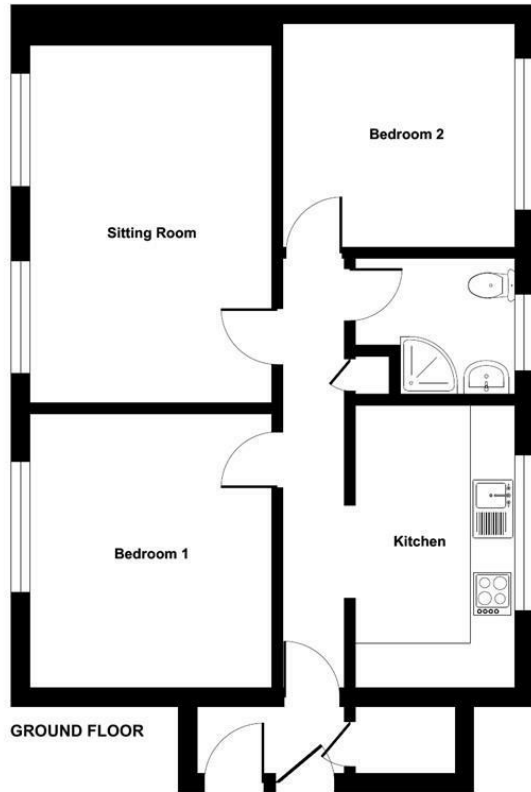
Local Council:

Eastleigh Borough Council - 02380 688000

Council Tax:

Band B

Ground Floor = 659 sq ft / 61.2 sq m
For identification only - Not to scale



Energy Efficiency Rating		Current	Potential
Very energy efficient - lower running costs			
(92 plus) A			
(81-91) B			
(69-80) C			74
(55-68) D			
(39-54) E		44	
(21-38) F			
(1-20) G			
Not energy efficient - higher running costs			
England & Wales		EU Directive 2002/91/EC	

Floor plan produced in accordance with RICS Property Measurement Standards incorporating International Property Measurement Standards (IPMS2 Residential). © rnichecom 2024. Produced for Sparks Ellison. REF: 1187698

94 Winchester Road, Chandler's Ford, Hampshire, SO53 2GJ

Sales: t: 02380 255333 e: property@sparksellison.co.uk

Lettings: t: 02380 018518 e: lettings@sparksellison.co.uk

While we endeavour to make our sales particulars fair, accurate and reliable, they are only a general guide to the property and, accordingly, if there is any point which is of particular importance to you please contact the office and we will be pleased to check it for you, especially if you are contemplating travelling some distance to view the property. These approximate room sizes are only intended as general guidance. You must verify the dimensions carefully before ordering carpets or any built in furniture. Please note we have not tested the services or any of the equipment or appliances in this property, accordingly we strongly advise prospective buyers to commission their own survey or service report before finalising their offer to purchase. These particulars are issued in good faith but do not constitute representations of fact or form part of any offer or contract. The matters referred to in these particulars should be independently verified by prospective buyers or tenants. Neither Sparks Ellison nor any of its employees or agents has any authority to make or give any representation or warranty whatever in relation to this property. Your home is at risk if you do not keep up repayments on a mortgage or other loan secured on it. Written quotations available on request. All loans secured on property. Life assurance usually required.



