



sparks ellison

# 12 Pine Court, Pine Road, SO53 1LJ

£230,000

An exceptionally well presented first floor apartment situated in this exclusive gated development within the heart of Hiltingbury. The location is conveniently placed within walking distance to a range of shops on Hiltingbury Road and Ashdown Road together with Hiltingbury Schools and Community Centre. The property itself benefits from a good sized sitting room, fitted kitchen, main bedroom with en-suite shower room, further double bedroom and bathroom. In addition to this is the benefit of two allocated off street parking spaces (tandem). Pine Court also occupies attractive well maintained communal gardens, security video entry system as well as the entrance to the property serving just one other apartment.

## ACCOMMODATION

### Reception Hall:

### Sitting Room:

Window overlooking the attractive gardens.

### Kitchen:

Range of fitted units, built in oven and hob with extractor hood over, integrated fridge/freezer, integrated dishwasher.

### Bedroom1:

Window overlooking the gardens.

### En-Suite:

Suite comprising shower cubicle, wash basin, wc.

### Bedroom 2:

Built in wardrobe.

### Bathroom:

White suite comprising bath, wash basin, wc.

## OUTSDIE

Pine Court occupies attractive communal gardens which can be enjoyed by the residents.

### Parking:

Two allocated parking spaces (tandem)

## OTHER INFORMATION

### Tenure:

Leasehold

### Length of Lease:

125 years from 1999

### Maintenance Charge:

£882.49 paid every six months

### Ground Rent:

£170 per annum due 1st July 2025

### Approximate Age:

1999

### Approximate Area:

56 sqm/602sqft

### Sellers Position:

Looking for forward purchase

### Heating:

Hive remote control gas central heating

### Windows:

UPVC double glazing

### Infant/Junior School:

Hiltingbury Infant/Junior School

### Secondary School:

Thornden Secondary School

### Local Council:

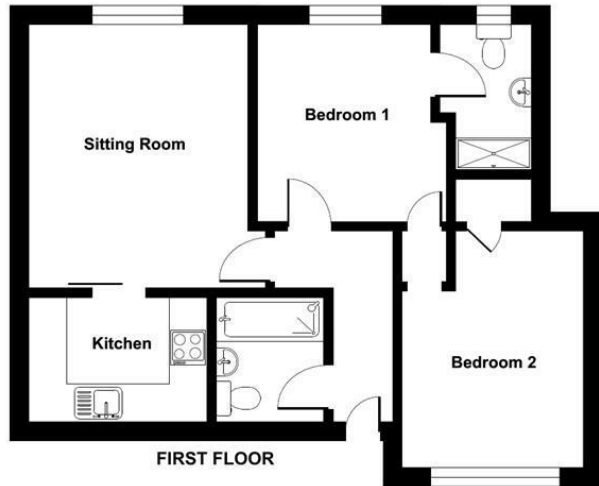
Eastleigh Borough Council - 02380 688000

### Council Tax:


Band C



Ground Floor = 602 sq ft / 56 sq m  
For identification only - Not to scale



Energy Efficiency Rating		
	Current	Potential
Very energy efficient - lower running costs		
(92 plus) <b>A</b>		
(81-91) <b>B</b>	<b>78</b>	<b>78</b>
(69-80) <b>C</b>		
(55-68) <b>D</b>		
(39-54) <b>E</b>		
(21-38) <b>F</b>		
(1-20) <b>G</b>		
Not energy efficient - higher running costs		
<b>England &amp; Wales</b>	EU Directive 2002/91/EC	

 Floor plan produced in accordance with RICS Property Measurement Standards incorporating International Property Measurement Standards (IPMS2 Residential). © richiecom 2024. Produced for Sparks Ellison. REF: 1177088

94 Winchester Road, Chandler's Ford, Hampshire, SO53 2GJ

Sales: t: 02380 255333 e: [property@sparksellison.co.uk](mailto:property@sparksellison.co.uk)  
Lettings: t: 02380 018518 e: [lettings@sparksellison.co.uk](mailto:lettings@sparksellison.co.uk)



While we endeavour to make our sales particulars fair, accurate and reliable, they are only a general guide to the property and, accordingly, if there is any point which is of particular importance to you please contact the office and we will be pleased to check it for you, especially if you are contemplating travelling some distance to view the property. These approximate room sizes are only intended as general guidance. You must verify the dimensions carefully before ordering carpets or any built in furniture. Please note we have not tested the services or any of the equipment or appliances in this property, accordingly we strongly advise prospective buyers to commission their own survey or service report before finalising their offer to purchase. These particulars are issued in good faith but do not constitute representations of fact or form part of any offer or contract. The matters referred to in these particulars should be independently verified by prospective buyers or tenants. Neither Sparks Ellison nor any of its employees or agents has any authority to make or give any representation or warranty whatever in relation to this property. Your home is at risk if you do not keep up repayments on a mortgage or other loan secured on it. Written quotations available on request. All loans secured on property. Life assurance usually required.

