



sparks ellison

# 42 Peverells Wood Avenue, Chandler's Ford, SO53 2BW

£399,950

Situated in the highly desirable Peverells Wood area is this modern three bedroom semi-detached home benefiting from a driveway and garage, south facing rear garden, 17'6" kitchen/dining room and three good sized bedrooms. The property has been updated over the past 2 years. Peverells Wood is conveniently situated close to the centre of Chandler's Ford and within walking distance to all amenities with the school catchments including the local Scantabout Primary School and Thornden Secondary School.

## ACCOMMODATION:

### GROUND FLOOR

#### Entrance porch:

#### Entrance Hall:

Stairs to first floor, under stairs storage cupboard.

#### Sitting Room:

15'1" x 11'9" (4.69 x 3.58m)

#### Kitchen/Dining room:

17'6" x 9'6" (5.33m x 2.90m) Built in oven, built in induction hob, integrated extractor hood, integrated dishwasher, integrated fridge, space for table and chairs, tiled floor.

#### Study:

12' x 5'1" (3.66m x 1.55m)

### FIRST FLOOR

#### Landing:

Access to loft space, built in airing cupboard.

#### Bedroom 1:

13'5" x 8'7" (4.09m x 2.62m) Range of fitted wardrobes along one wall.

#### Bedroom 2:

11'5" x 9' (3.48 x 2.74)

#### Bedroom 3:

10'5" max x 7'5" (3.18m max x 2.26m) Built in wardrobe.

#### Bathroom:

8'3" x 5'6" (2.51m x 1.68m) White suite with chrome fittings comprising open ended shower enclosure, wash hand basin, WC.

### OUTSIDE

#### Front:

Area laid to lawn, planted beds, steps to front door, driveway providing off-road parking.

#### Rear garden:

Measures approximately 30' x 28' The rear garden benefits from a pleasant southerly aspect and comprises paved patio area, area laid to lawn, variety of plants and shrubs, area lead to timber deck.

#### Garage:

17'1" x 8'7" with up and over door, power and light, wall mounted boiler.

### OTHER INFORMATION

#### Tenure:

Freehold

#### Approximate Age:

1960's

#### Approximate Area:

107.6sqm/1156sqft including garage

#### Sellers Position:

Looking for forward purchase

#### Heating:

Gas central heating

#### Windows:

UPVC double glazed windows

#### Infant/Junior School:

Scantabout Primary School

#### Secondary School:

Thornden Secondary School

#### Local Council:

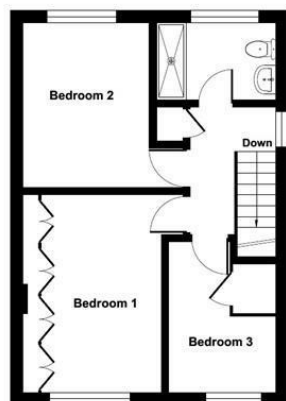
Eastleigh Borough Council - 02380 688000

#### Council Tax:

Band C



Ground Floor = 557 sq ft / 51.7 sq m  
 First Floor = 448 sq ft / 41.6 sq m  
 Garage = 155 sq ft / 14.3 sq m  
 Total = 1156 sq ft / 107.6 sq m  
 For identification only - Not to scale

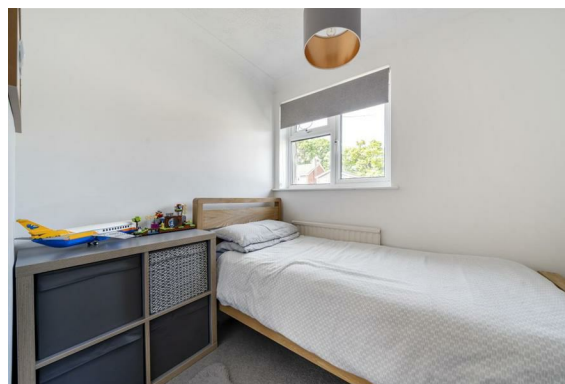


FIRST FLOOR



GROUND FLOOR

Floor plan produced in accordance with RICS Property Measurement Standards incorporating International Property Measurement Standards (IPMS2 Residential). © richiecom 2023. Produced for Sparks Ellison. REF: 985327



Energy Efficiency Rating		Current	Potential
Very energy efficient - lower running costs			
(92 plus) A			
(81-91) B			82
(69-80) C		68	
(55-68) D			
(39-54) E			
(21-38) F			
(1-20) G			
Not energy efficient - higher running costs			
England & Wales		EU Directive 2002/91/EC	

94 Winchester Road, Chandler's Ford, Hampshire, SO53 2GJ

Sales: t: 02380 255333 e: [property@sparksellison.co.uk](mailto:property@sparksellison.co.uk)

Lettings: t: 02380 018518 e: [lettings@sparksellison.co.uk](mailto:lettings@sparksellison.co.uk)

While we endeavour to make our sales particulars fair, accurate and reliable, they are only a general guide to the property and, accordingly, if there is any point which is of particular importance to you please contact the office and we will be pleased to check it for you, especially if you are contemplating travelling some distance to view the property. These approximate room sizes are only intended as general guidance. You must verify the dimensions carefully before ordering carpets or any built in furniture. Please note we have not tested the services or any of the equipment or appliances in this property, accordingly we strongly advise prospective buyers to commission their own survey or service report before finalising their offer to purchase. These particulars are issued in good faith but do not constitute representations of fact or form part of any offer or contract. The matters referred to in these particulars should be independently verified by prospective buyers or tenants. Neither Sparks Ellison nor any of its employees or agents has any authority to make or give any representation or warranty whatever in relation to this property. Your home is at risk if you do not keep up repayments on a mortgage or other loan secured on it. Written quotations available on request. All loans secured on property. Life assurance usually required.



