



PRIVATE PRIVATE PRIV

7 Bright Wire Crescent, Eastleigh, SO50 5SQ

£175,000

This well presented one bedroom purpose built modern ground floor apartment offers excellent accessibility to the centre of Eastleigh. The property comprises 14' sitting /dining room, generous bedroom with built-in wardrobes and en-suite bathroom, comprehensively fitted kitchen and separate cloakroom. Externally, the home enjoys the use of one private allocated parking space with a further shared "visitors" space. The home is presented to high standard throughout and is offered for sale with no forward chain.

ACCOMMODATION

Private Front Door:

Sitting/Dining Room:

14'7" x 14'9" (4.345m x 4.50m) (maximum measurements). Electric feature fireplace. Airing cupboard with hot water cylinder and linen shelving. Space for dining table and chairs.

Kitchen:

8'5" x 8'1" (2.57m x 2.46m) Modern fitted kitchen with matching base and eye level units and contrasting work surfaces. Space for upright fridge/freezer. Space and plumbing for washing machine, built in electric oven, hob with extractor hood over, wood laminate flooring.

Inner Lobby:

Cloakroom:

5'4" x 2'8" (1.63m x 0.81m) Matching white WC and wash hand basin.

Bedroom:

12'7" x 10'3" (3.84m x 3.12m) Built-in wardrobes.

En-Suite Bathroom:

7'7" x 5'2" (2.31m x 1.57m) White suite comprising panel enclosed bath with shower attachment over, wash hand basin, and WC. Extractor fan.

OUTSIDE

the property benefits from one allocated parking space and a further visitors space shared with the neighbour.

OTHER INFORMATION

Tenure:

Leasehold

Ground Rent:

£75.00 every 6 months

Maintenance Charge:

Approximately £350.00 every 6 months

Approximate Age:

2005

Approximate Area:

45.9sqm/494sqft

Sellers Position:

No forward chain

Heating:

Electric

Windows:

UPVC double glazed windows

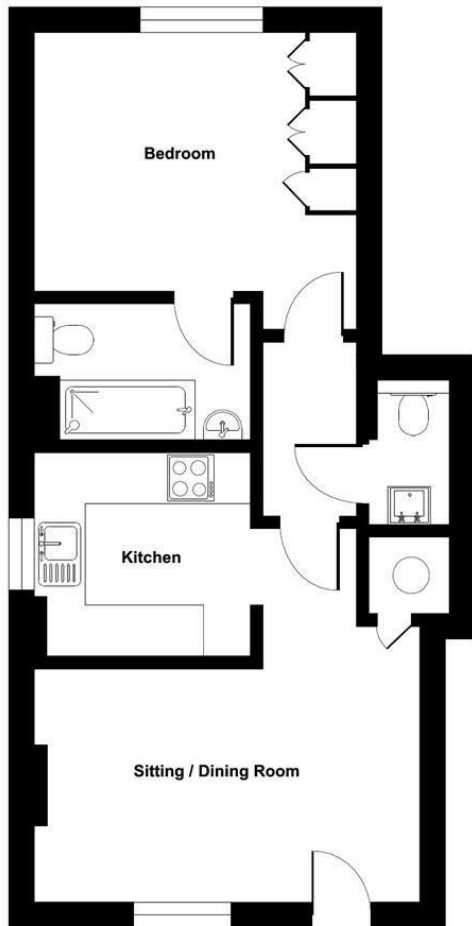
Local Council:

Eastleigh Borough Council - 02380 688000

Council Tax:

Band B


Approximate Area = 494 sq ft / 45.9 sq m
For identification only - Not to scale



GROUND FLOOR

 Certified Property Measurer
Floor plan produced in accordance with RICS Property Measurement Standards incorporating International Property Measurement Standards (IPMS2 Residential). © nrichcom 2024. Produced for Sparks Ellison. REF: 1107751



Energy Efficiency Rating		
	Current	Potential
Very energy efficient - lower running costs		
(92 plus) A		
(81-91) B		80
(69-80) C	63	
(55-68) D		
(39-54) E		
(21-38) F		
(1-20) G		
Not energy efficient - higher running costs		
England & Wales	EU Directive 2002/91/EC	

94 Winchester Road, Chandler's Ford, Hampshire, SO53 2GJ

Sales: t: 02380 255333 e: property@sparksellison.co.uk

Lettings: t: 02380 018518 e: lettings@sparksellison.co.uk

While we endeavour to make our sales particulars fair, accurate and reliable, they are only a general guide to the property and, accordingly, if there is any point which is of particular importance to you please contact the office and we will be pleased to check it for you, especially if you are contemplating travelling some distance to view the property. These approximate room sizes are only intended as general guidance. You must verify the dimensions carefully before ordering carpets or any built in furniture. Please note we have not tested the services or any of the equipment or appliances in this property, accordingly we strongly advise prospective buyers to commission their own survey or service report before finalising their offer to purchase. These particulars are issued in good faith but do not constitute representations of fact or form part of any offer or contract. The matters referred to in these particulars should be independently verified by prospective buyers or tenants. Neither Sparks Ellison nor any of its employees or agents has any authority to make or give any representation or warranty whatever in relation to this property. Your home is at risk if you do not keep up repayments on a mortgage or other loan secured on it. Written quotations available on request. All loans secured on property. Life assurance usually required.



