



sparks ellison

5 The Hillway, Chandler's Ford, SO53 2PJ

£695,000

A superbly presented detached family home situated in a delightful cul de sac within the centre of Chandler's Ford providing easy access to an array of amenities including Waitrose supermarket. and the Number 1 Bus Route. Boasting 2 reception rooms, 4 spacious bedrooms, and 2 modern bathrooms, this property offers ample space for comfortable living. There is a 27'2" kitchen/breakfast/dining room opening on to the rear garden and a 17' sitting room at the front. The convenience of a ground floor shower room, utility room and a family room completes the excellent ground floor accommodation. Externally there is a large driveway that extends across the front and side of the property providing ample parking which also includes a garage. The rear garden provides excellent elevated views over Chandler's Ford.

ACCOMMODATION:

GROUND FLOOR:

Entrance Hall:

Sitting Room:

17' x 13'10" (5.18m x 4.22m)

Kitchen/Breakfast/Dining Room:

27'2" x 9'8" (8.28m x 2.95m) Built in oven, built in microwave / combination oven, built in induction hob, fitted extractor hood, space for fridge freezer, space and plumbing for dishwasher, fitted breakfast bar, space for table and chairs.

Utility Room:

6'5" x 5'8" (1.96m x 1.73m) Space and plumbing for washing machine, space for tumble dryer, wall mounted boiler.

Family Room:

9'9" x 8'11" (2.97m x 2.72m)

Shower Room:

6'11" x 5'7" (2.11m x 1.70m) Shower in cubicle, wash hand basin, WC, tiled walls, tiled floor.

FIRST FLOOR:

Landing:

Access to loft space.

Bedroom 1:

12'6" x 12'6" (3.81m x 3.81m)

Bedroom 2:

21'2" x 9' (6.45m x 2.74m)

Bedroom 3:

12'6" max x 8'4" (3.81m x 2.54m)

Bedroom 4:

12'5" x 7'9" (3.78m x 2.36m)

Bathroom:

10'11" x 5'2" (3.33m x 1.57m) Comprising shower in cubicle, bath, wash hand basin, WC, tiled walls, tiled floor.

OUTSIDE:

Front:

Large gravel driveway providing off road parking for several vehicles. The driveway extends along the side of the property via double gates to the continuation of drive leading to the garage.

Rear Garden:

44' x 35' Large paved patio area, steps to area laid to lawn, planted beds, excellent views over Chandler's Ford.

Garage:

17'5" x 8'7" (5.31m x 2.62m) With up and over door, power and light.

OTHER INFORMATION

Tenure:

Freehold

Approximate Age:

1960's

Approximate Area:

1667sqft/154.9sqm (Including limited use areas and garage)

Sellers Position:

Looking for forward purchase but would consider vacant possession.

Heating:

Gas central heating

Windows:

UPVC double glazing

Infant/Junior School:

Chandlers Ford Infant School / Merdon Junior School

Secondary School:

Toynbee Secondary School

Local Council:

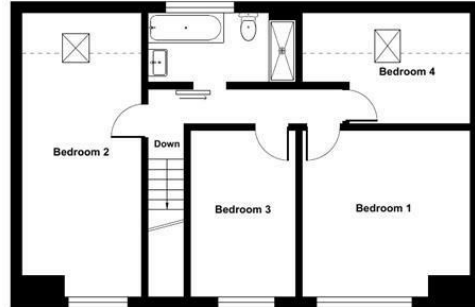
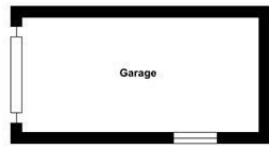
Eastleigh Borough Council - 02380 688000

Council Tax:

Band E

Ground Floor = 808 sq ft / 75.1 sq m
 First Floor = 643 sq ft / 59.7 sq m
 Garage = 152 sq ft / 14.1 sq m
 Limited Use Area(s) = 64 sq ft / 6 sq m
 Total = 1667 sq ft / 154.9 sq m
 For identification only - Not to scale

Denotes restricted head height



FIRST FLOOR



GROUND FLOOR

Floor plan produced in accordance with RICS Property Measurement Standards incorporating International Property Measurement Standards (IPMS2 Residential). © nichecom 2024. Produced for Sparks Ellison. REF: 1109940



Energy Efficiency Rating		Current	Potential
Very energy efficient - lower running costs			
(92 plus) A			
(81-91) B			83
(69-80) C		64	
(55-68) D			
(39-54) E			
(21-38) F			
(1-20) G			
Not energy efficient - higher running costs			
England & Wales		EU Directive 2002/91/EC	

94 Winchester Road, Chandler's Ford, Hampshire, SO53 2GJ

Sales: t: 02380 255333 e: property@sparksellison.co.uk
 Lettings: t: 02380 018518 e: lettings@sparksellison.co.uk

While we endeavour to make our sales particulars fair, accurate and reliable, they are only a general guide to the property and, accordingly, if there is any point which is of particular importance to you please contact the office and we will be pleased to check it for you, especially if you are contemplating travelling some distance to view the property. These approximate room sizes are only intended as general guidance. You must verify the dimensions carefully before ordering carpets or any built in furniture. Please note we have not tested the services or any of the equipment or appliances in this property, accordingly we strongly advise prospective buyers to commission their own survey or service report before finalising their offer to purchase. These particulars are issued in good faith but do not constitute representations of fact or form part of any offer or contract. The matters referred to in these particulars should be independently verified by prospective buyers or tenants. Neither Sparks Ellison nor any of its employees or agents has any authority to make or give any representation or warranty whatever in relation to this property. Your home is at risk if you do not keep up repayments on a mortgage or other loan secured on it. Written quotations available on request. All loans secured on property. Life assurance usually required.



