

for sale

£200,000



Hudson Grove Peterborough PE7 0LT

This mid-terraced property would make an ideal purchase for those looking for an investment opportunity or a first time buyer. On the market with no chain, the property offers a lounge, kitchen, downstairs toilet, two bedrooms, bathroom and a rear garden. Call Connells Hampton for more information.



Hudson Grove Peterborough PE7 0LT

Hall

With doors leading to the kitchen, lounge/diner, cloakroom and stairs leading to the first floor. Carpet and radiator.

Cloakroom

With window to the front, wc, wash hand basin with tiled splashback and radiator.

Kitchen

6' 2" x 9' 10" (1.88m x 3.00m)

With a range of matching wall and base units with worktop over, sink and drainer with mixer tap, electric oven, gas hob with extractor hood over. Plumbing for washing machine and space for a fridge freezer. Window to the front.

Lounge / Diner

12' 11" x 14' 5" (3.94m x 4.39m)

With a storage cupboard, two radiators, carpet and French doors to the rear leading to the rear garden.

Landing

With doors leading to bedroom one, bedroom two and the bathroom.

Bedroom One

13' 1" x 9' (3.99m x 2.74m)

With a built in wardrobe, radiator, carpet and window to the rear.



Bedroom Two

13' x 8' 4" (3.96m x 2.54m)

With a radiator and a window to the rear.

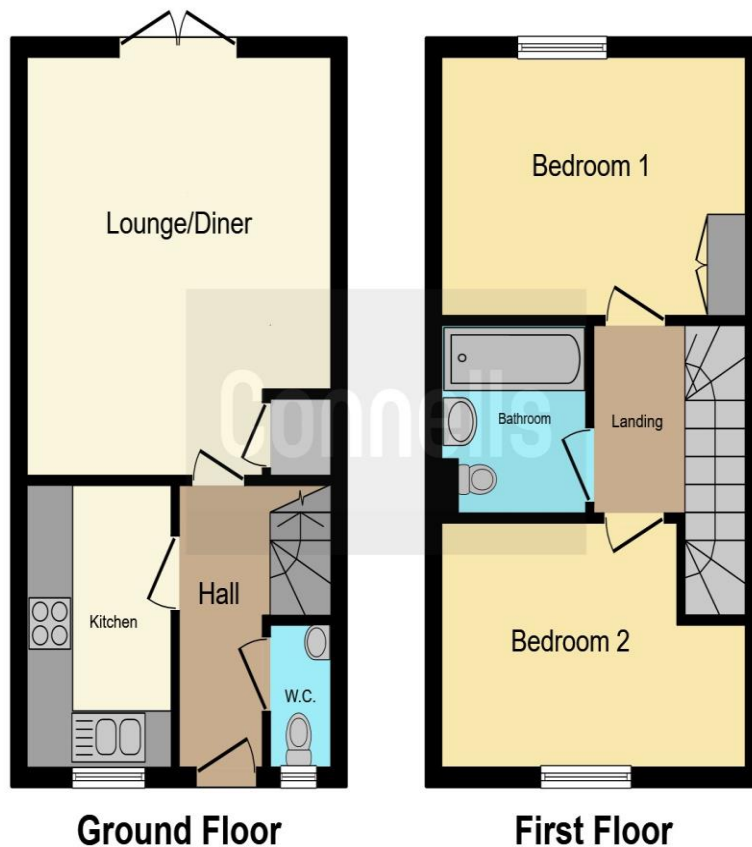
Bathroom

Fully tiled with a wc, wash hand basin in vanity unit and bath with shower over. Heated towel rail and tiled floor.

External

With allocated parking. The rear garden is enclosed by fencing and is laid to lawn with a patio area.





This floor plan is for illustrative purposes only. It is not drawn to scale. Any measurements, floor areas (including any total floor area), openings and orientation are approximate. No details are guaranteed, they cannot be relied upon for any purpose and they do not form part of any agreement. No liability is taken for any error, omission or misstatement. A party must rely upon its own inspection(s). Powered by www.focalagent.com

To view this property please contact Connells on

T 01733 229483
E Hampton@connells.co.uk

10 Stewartby Avenue Hampton Vale
 PETERBOROUGH PE7 8NJ

Property Ref: HAH305729 - 0003

Tenure: Freehold EPC Rating: C

Council Tax Band: B

view this property online connells.co.uk/Property/HAH305729



1. MONEY LAUNDERING REGULATIONS Intending purchasers will be asked to produce identification documentation at a later stage and we would ask for your co-operation in order that there will be no delay in agreeing the sale. 2. These particulars do not constitute part or all of an offer or contract. 3. The measurements indicated are supplied for guidance only and as such must be considered incorrect. Potential buyers are advised to recheck measurements before committing to any expense. 4. We have not tested any apparatus, equipment, fixtures, fittings or services and it is in the buyers interest to check the working condition of any appliances.

Connells Residential is registered in England and Wales under company number 1489613, Registered Office is Cumbria House, 16-20 Hockliffe Street, Leighton Buzzard, Bedfordshire, LU7 1GN. VAT Registration Number is 500 2481 05.

see all our properties at www.connells.co.uk | www.rightmove.co.uk | www.zoopla.co.uk