

for sale

£400,000



Kite Way Hampton Vale Peterborough PE7 8PT

Located in the popular Hampton Vale area, this detached property is an ideal family home. Offering 5 bedrooms and a large rear garden, the property also benefits from a garage. Call the Sales team today on 01733 229483 for more information and to book a viewing.



Kite Way Hampton Vale Peterborough PE7 8PT

Entrance Hall

With laminate floor, radiator and doors leading to the cloakroom, the living room and kitchen/dining room.

Cloakroom

With w/c, wash hand basin, extractor fan, laminate flooring and a window to the front.

Lounge

11' x 19' 2" (3.35m x 5.84m)

With laminate flooring, window to the rear, radiator and patio doors leading to the rear garden.

Kitchen / Dining Room

17' 8" into bay window x 9' (5.38m into bay window x 2.74m)

With a range of matching wall and base units, single oven, 4 ring gas hob, dishwasher, 1.5 sink and drainer, radiator, laminate floor, bay window to the front and a window to the side.

Landing - First Floor

With window to the side, storage cupboard, carpet, radiator and doors leading to bedroom one, bedroom four, bedroom five and the bathroom.

Bedroom Five

8' 11" into recess x 8' 7" (2.72m into recess x 2.62m)

With window to the rear, radiator and carpet.



Bedroom Four

8' 4" x 10' 3" (2.54m x 3.12m)

With window to the rear, radiator and carpet.

Bathroom

With tiled floor, wash hand basin, w/c, towel rail, bath with shower attachment, extractor and shaving points.

Bedroom One

11' 1" into recess x 10' 6" (3.38m into recess x 3.20m)

With window to the front, radiator, carpet, double wardrobe and door leading to en suite.

En Suite

With window to front, a double shower, w/c, wash hand basin, radiator, extractor fan, heated towel rail, shave points and tile flooring.

Landing - Second Floor

With window to the side, access to the loft, storage cupboard, carpet and doors leading to bedroom two, bedroom three and bathroom.

Bedroom Three

9' 2" x 19' 2" (2.79m x 5.84m)

With 2 windows to the rear, carpet, radiator. Restricted head height.

Bathroom

With w/c, wash hand basin, bath with shower attachment, heated towel rail, extractor fan and tiled floor.

Bedroom Two

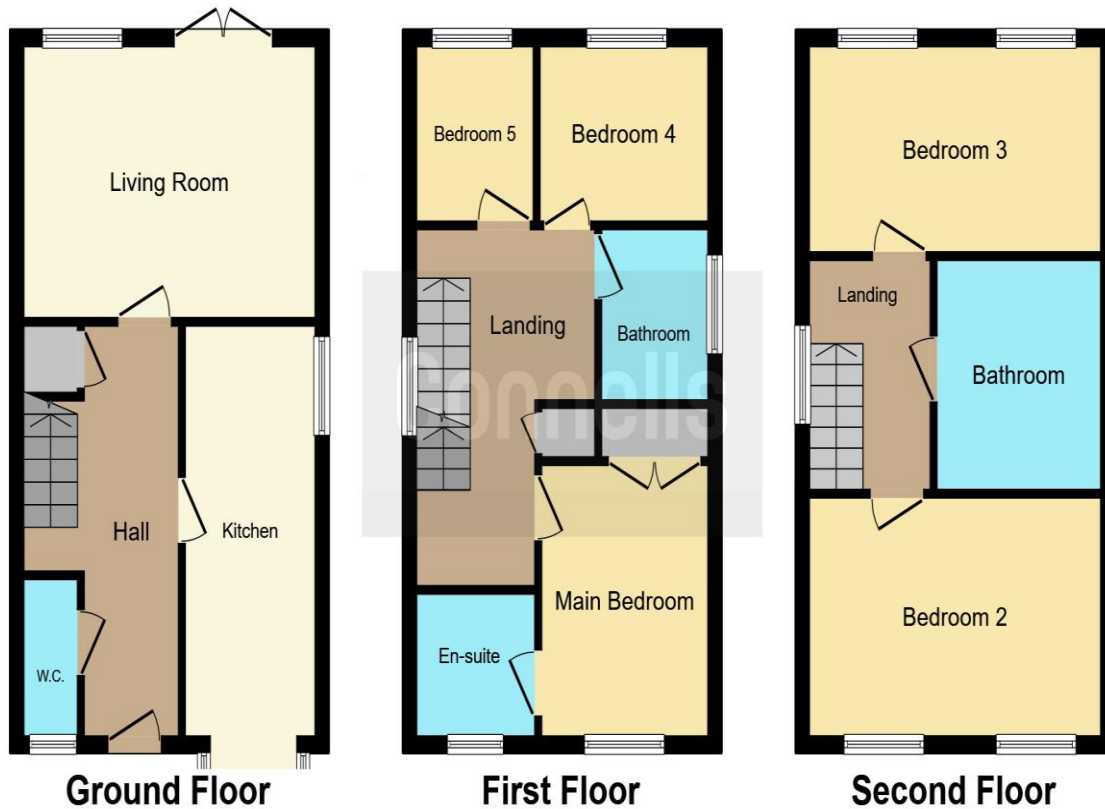
11' 1" into recess x 10' 6" (3.38m into recess x 3.20m)

With 2 windows to the front, radiator, carpet and access to the loft. Restricted head height.

External

The rear garden is mainly laid to lawn, with a patio area, side access & outside tap.





This floor plan is for illustrative purposes only. It is not drawn to scale. Any measurements, floor areas (including any total floor area), openings and orientation are approximate. No details are guaranteed, they cannot be relied upon for any purpose and they do not form part of any agreement. No liability is taken for any error, omission or misstatement. A party must rely upon its own inspection(s). Powered by www.focalagent.com



To view this property please contact Connells on

T 01733 229483
E Hampton@connells.co.uk

10 Stewartby Avenue Hampton Vale
 PETERBOROUGH PE7 8NJ

Property Ref: HAH305668 - 0016

Tenure: Freehold

EPC Rating: B

view this property online connells.co.uk/Property/HAH305668

1. MONEY LAUNDERING REGULATIONS Intending purchasers will be asked to produce identification documentation at a later stage and we would ask for your co-operation in order that there will be no delay in agreeing the sale. 2. These particulars do not constitute part or all of an offer or contract. 3. The measurements indicated are supplied for guidance only and as such must be considered incorrect. Potential buyers are advised to recheck measurements before committing to any expense. 4. We have not tested any apparatus, equipment, fixtures, fittings or services and it is in the buyers interest to check the working condition of any appliances.

Connells Residential is registered in England and Wales under company number 1489613, Registered Office is Cumbria House, 16-20 Hockliffe Street, Leighton Buzzard, Bedfordshire, LU7 1GN. VAT Registration Number is 500 2481 05.

see all our properties at www.connells.co.uk | www.rightmove.co.uk | www.zoopla.co.uk