



ROYAL BREAKWATER HOTEL CASTLETOWN PORTLAND DORSET DT5 1BD

- Character Grade II Listed Building with Bay and Harbour Views
- Within Minutes of Portland Port, Osprey Quay Business Park and National Sailing Academy
- 17 Letting Bedrooms (8 en-suite), Breakfast Room, Bar Lounge, 3 Bedroom Flat and 1 Bedroom Flat
- Ideal Budget Accommodation/Long Term Letting Investment
- Established Trading Pattern Generating £227,500 To Y.E. 2024
- Potential for Residential Flat Conversion s.t.p.p. or to Reinstate Freehouse/Licensed Restaurant

£525,000 Freehold



goadsby

goadsby.com

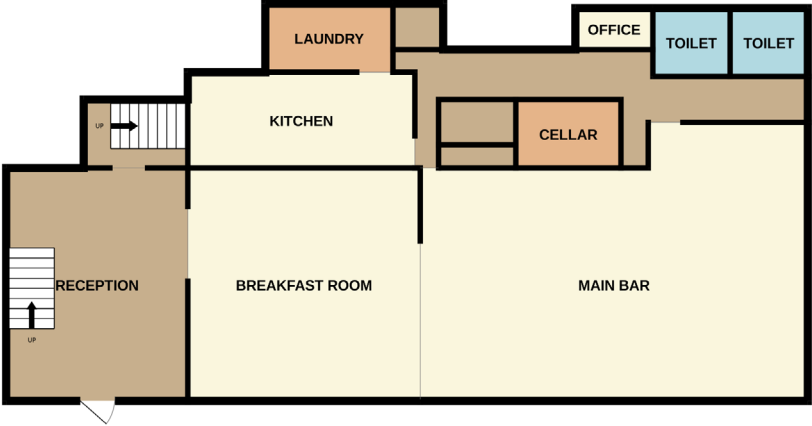
01202 550077

Contact

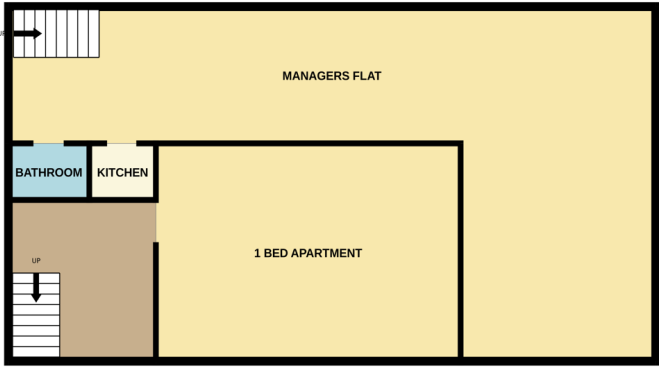
Ian Palmer MNAEA (Commercial)

ian.palmer@goadsby.com

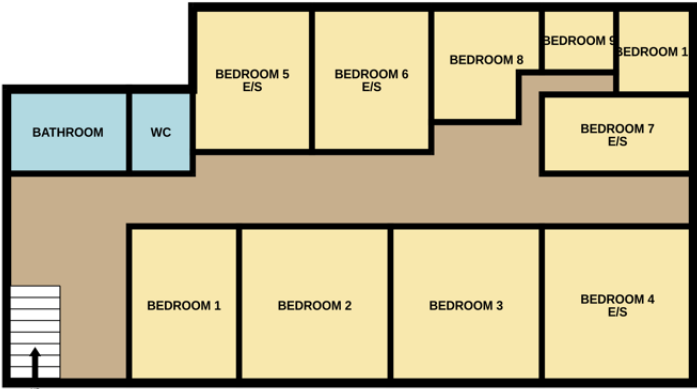
Ground Floor



First Floor



Second Floor



Third Floor



Not to Scale - For illustration purposes only

