

Tel: 01202 971829 | email: louise@urbanandcountryhomes.co.uk

www.urbanandcountryhomes.co.uk



Welcome to Woodland View

Woodland View, 159 Lower Blandford Road, Broadstone. BH18 8NU

'Woodland View' is a much anticipated, brand new development of just 7 individual apartments occupying a prime town centre position. The cosmopolitan town centre of Broadstone could hardly be closer, Marks & Spencer Food, local independent shops and amenities all within just a few hundred yards of the development. In addition, the town boasts a championship golf course ranked in the top 100 golf courses in the UK, leisure centre and David Lloyd Leisure within close proximity.



- 1 Woodland View – 2 Bedroom, Ground Floor Apartment - £350,000
- 2 Woodland View – 2 Bedroom, Ground Floor Garden Apartment - £390,000
- 3 Woodland View – 2 Bedroom, Ground Floor Apartment - £360,000
- 4 Woodland View – 2 Bedroom 1st Floor Apartment with Sun Balcony - £370,000
- 5 Woodland View – 2 Bedroom 1st Floor Apartment with Sun Balcony - £385,000
- 6 Woodland View – 2 Bedroom, 1st Floor Apartment with Juliette Balcony - £360,000
- 7 Woodland View – 2 Bedroom Penthouse Apartment with Balcony & Private Lift Access - £400,000

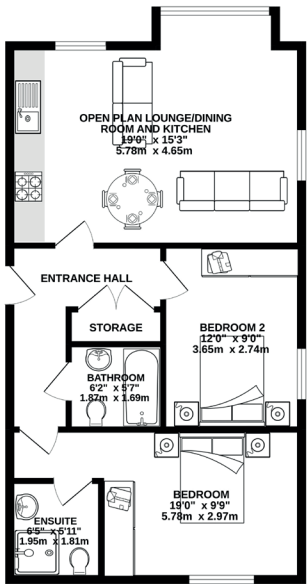
* Share Of Freehold Available at £5000.00 per apartment

Highlights

- Brand new development of just 7 luxury apartments
- Beautifully appointed individual homes
- Prime BH18 town centre position
- Allocated parking with electric charging point
- Lift access to all floors
- 10 Year buildings warranty
- Anticipated Completion Autumn 2022
- Communal Gardens
- Traditional architecture combined with stylish, contemporary modern day living
- Penthouse with direct private lift access
- Ground floor apartment with private landscaped garden
- 1st floor apartment with private balcony
- Share Of Freehold Available

The Apartment Features

- Set out over 3 floors
- 2 Double Bedrooms
- Contemporary fully integrated kitchens
- Integrated Neff appliances, Washing Machine, Dish Washer, Fridge/Freezer, Dual Oven & Grill, Extractor Hood
- Blumotion Soft Close kitchen units & drawers
- Modern Bathroom & En-Suite facilities
- Double Glazing
- Under floor Heating throughout
- Video Door System
- Solar Panels
- Floor Coverings Included
- Share Of Freehold Available



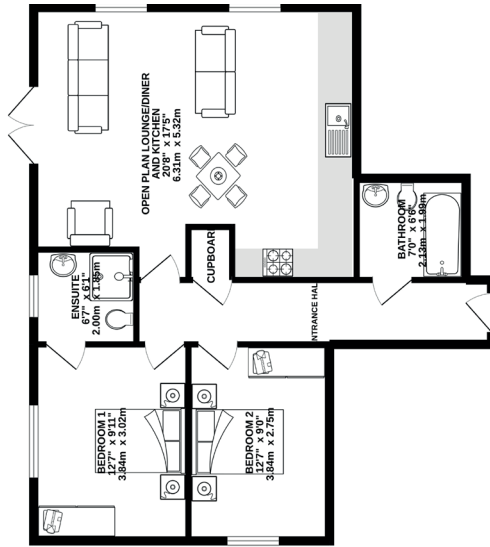
Apartment 1

Openplan Lounge/Kitchen:
19.0" x 15.3" (5.78 x 4.65m)

Bedroom 1:
19.0" x 9.9" (5.78 x 2.97m)

Bedroom 2:
12.0" x 9.0" (3.65 x 2.74m)

Bathroom:
6.2" x 5.7" (1.87 x 1.69m)



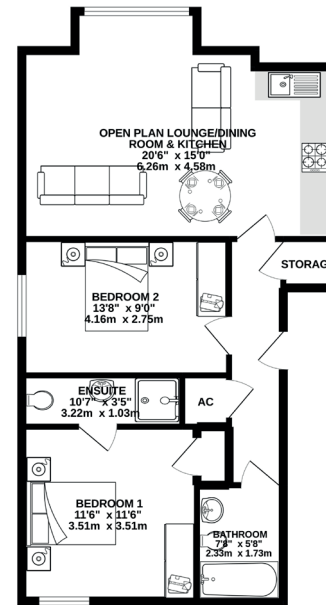
Apartment 2

Openplan Lounge/Kitchen:
20.8" x 17.5" (6.31 x 5.32m)

Bedroom 1:
12.7" x 9.11" (3.84 x 3.02m)

Bedroom 2:
12.7" x 9.0" (3.84 x 2.75m)

Bathroom:
7.0" x 6.6" (2.13 x 1.99m)



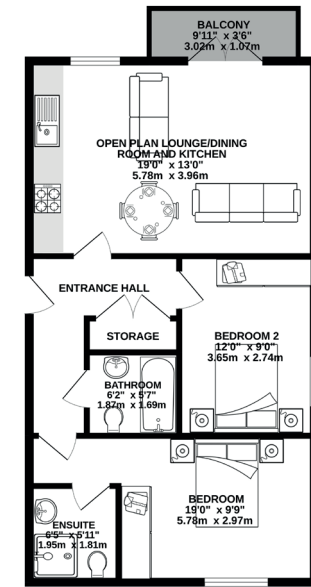
Apartment 3

Openplan Lounge/Kitchen:
20.6" x 15 max" (6.26 x 4.58m)

Bedroom 1:
11.6" x 11.6" (5.51 x 3.51m)

Bedroom 2:
13.8" x 9.0" (4.16 x 2.75m)

Bathroom:
7.8" x 5.8" (2.33 x 1.73m)



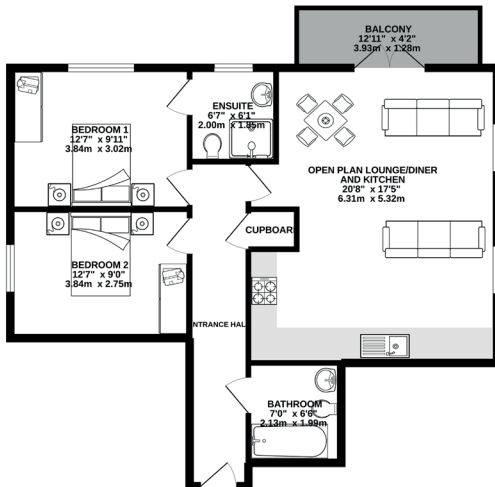
Apartment 4

Openplan Lounge/Kitchen:
19.0" x 13.0" (5.78 x 3.96m)

Bedroom 1:
19.0" x 9.9" (5.78 x 2.97m)

Bedroom 2:
12.0" x 9.0" (3.65 x 2.74m)

Bathroom:
6.2" x 5.7" (1.87 x 1.69m)



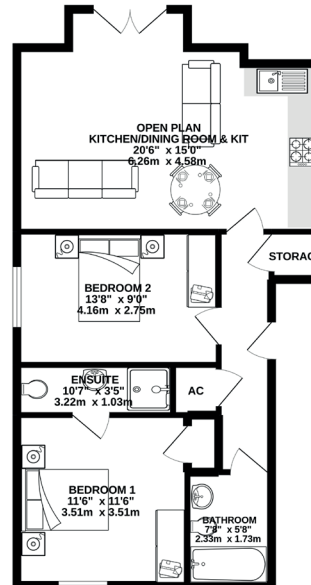
Apartment 5

Openplan Lounge/Kitchen:
20.8" x 17.5" (6.31 x 5.32m)

Bedroom 1:
12.7" x 9.11" (3.84 x 3.02m)

Bedroom 2:
12.7" x 9.0" (3.84 x 2.75m)

Bathroom:
7.0" x 6.6" (2.13 x 1.99m)



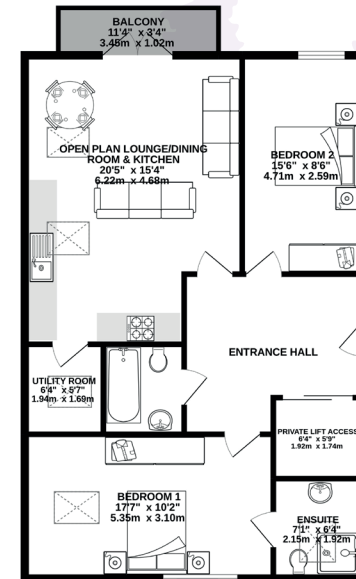
Apartment 6

Openplan Lounge/Kitchen:
20.6" x 15 max" (6.26 x 4.58m)

Bedroom 1:
11.6" x 11.6" (3.51 x 3.51m)

Bedroom 2:
13.8" x 9.0" (4.16 x 2.75m)

Bathroom:
7.8" x 5.8" (2.33 x 1.73m)



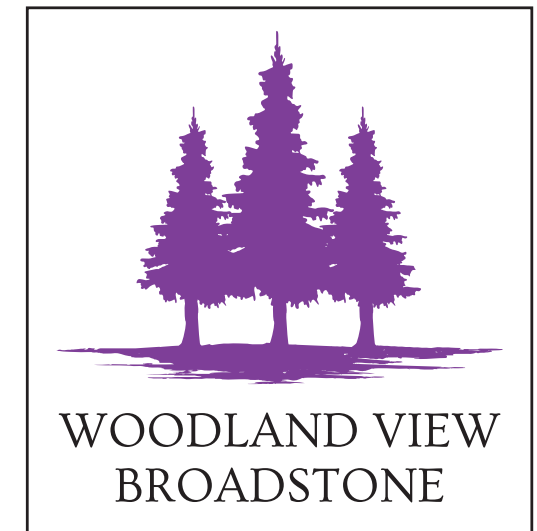
Apartment 7

Openplan Lounge/Kitchen:
20.5" x 15.4 (6.22 x 4.68m)

Bedroom 1:
17.7" x 10.2" (5.35 x 3.10m)

Bedroom 2:
15.6" x 8.6" (4.71 x 2.59m)

Bathroom:
6.7" x 6.7" (2.01 x 2.01m)



159 Lower Blandford Road, Broadstone. BH18 8NU

- Walking Distance Of Broadstone Town Centre
- Poole Town Centre - Approximately 3 Miles
- Poole Main Line Train Station - Approximately 2.7 Miles
- Bournemouth Town Centre - Approximately 5.5 Miles
- Bournemouth International Airport - Approximately 6.8 Miles
- Castle Point Shopping Centre - Approximately 6.6 Miles
- Wimborne Town Centre - Approximately 2.9 Miles

For Further information

Tel: 01202 971829 | email: louise@urbanandcountryhomes.co.uk
www.urbandandcountryhomes.co.uk



These details are to give a general indication of the proposed specification. The developer engages in continuous product development and reserves the right to alter any part of the development specification at any time as necessary and without notice. Maps are not to scale and show approximate locations only. All imagery of the property contained in this brochure are for illustrative purposes only. The information in this document is indicative and only intended to act as a guide to the finished product, These particulars should not be relied upon as accurately describing any of the specific matters described by any order under the Property Misdescriptions Act 1991. No responsibility is accepted by the developer for any errors or omissions and the above information and marketing material does not constitute or form part of any contract, or warranty. The dimensions given on plans are subject to variations and are not intended to be used for carpet sizes, appliance sizes or items of furniture.