



## 9 Chartwell Close, London, SE9 3UQ

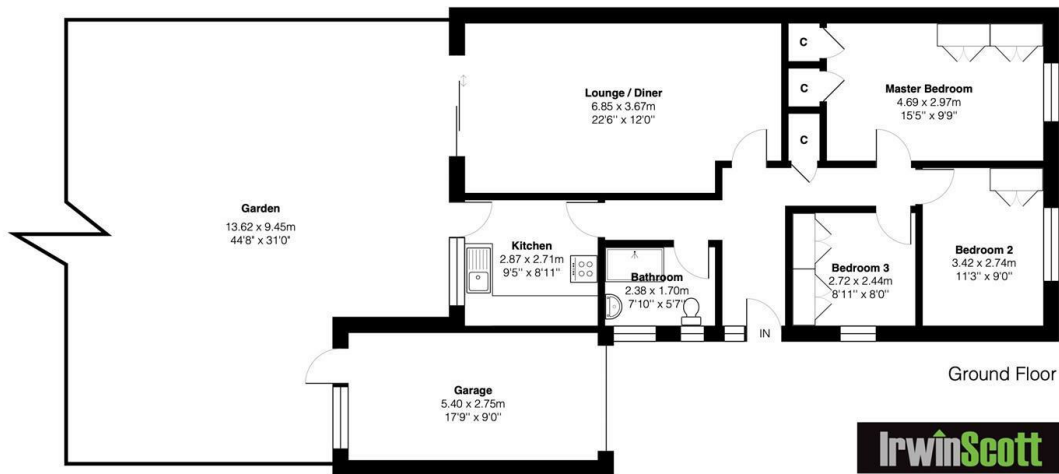
£510,000

- Semi Detached Bungalow
- Modern Shower Room
- Gas Central Heating
- Closer to Village & Station
- Three Bedrooms
- Fitted Kitchen
- Garage
- 22'6 Lounge/Dining Room
- Double Glazing
- Garden

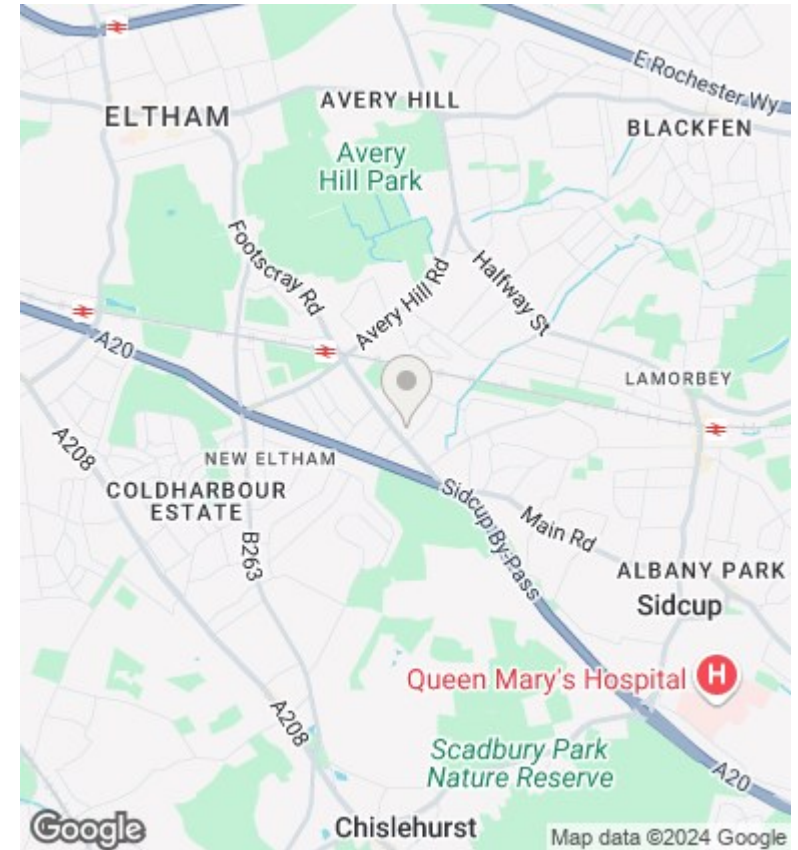
Chartwell Close SE9



Total Area 97.3 m<sup>2</sup>... 1047 ft<sup>2</sup>



This plan is for layout guidance only and not drawn to scale unless stated. Window and door openings are approximate. Whilst every care is taken in the preparation of this plan, we would advise interested parties to check all dimensions, shapes and compass bearings prior to making any decisions reliant upon them.



## Directions

## Viewings

Viewings by arrangement only. Call 0208 859 1100 to make an appointment.

## Council Tax Band

E

## EPC Rating:

C

Energy Efficiency Rating		Current	Potential
<i>Very energy efficient - lower running costs</i>			
(92 plus) <b>A</b>			<div style="text-align: center;"> <span style="font-size: 2em;">88</span>  <span style="font-size: 2em;">70</span> </div>
(81-91) <b>B</b>			
(69-80) <b>C</b>			
(55-68) <b>D</b>			
(39-54) <b>E</b>			
(21-38) <b>F</b>			
(1-20) <b>G</b>			
<i>Not energy efficient - higher running costs</i>			
<b>England &amp; Wales</b>		EU Directive 2002/91/EC	