

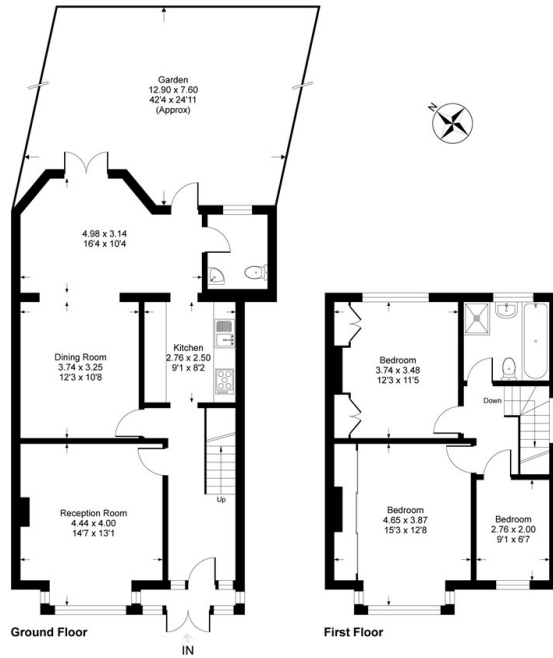


7 Thaxted Road, London, SE9 3PU

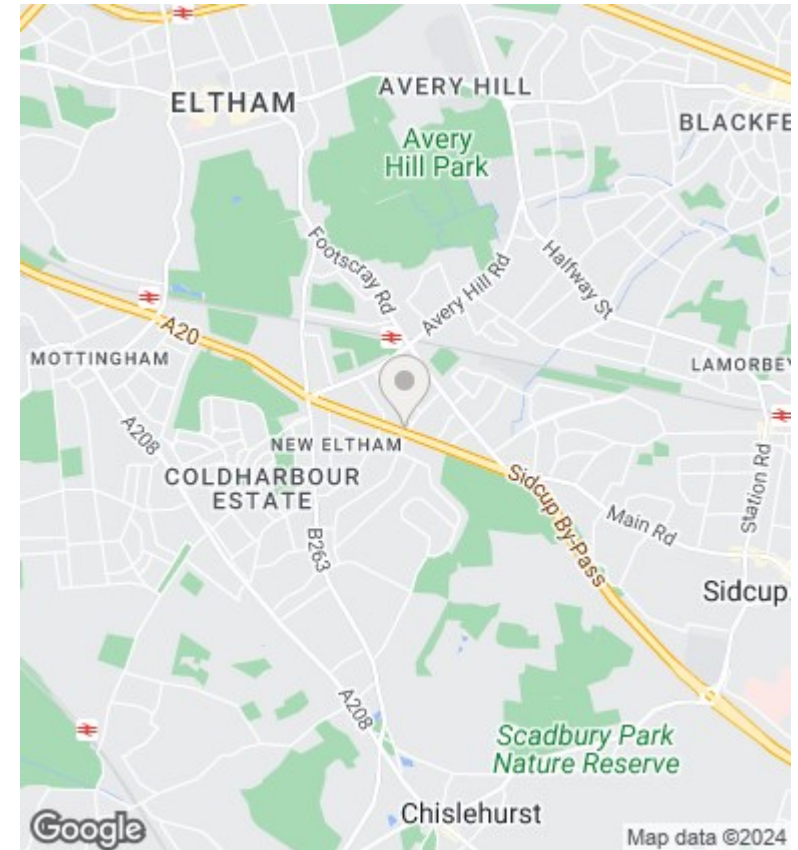
£525,000

- Three Bedrooms
- Ground Floor extension
- Fitted Kitchen
- Freehold
- Two Reception Rooms
- Utility Room /WC
- Modern Bathroom
- Double Glazed
- Gas Fired Central Heating
- Off Street Parking

Thaxted Road, SE9
 Approximate Gross Internal Area = 114 sq m / 1228 sq ft



This plan is for layout guidance only. Not drawn to scale unless stated. Windows and door openings are approximate. Whilst every care is taken in the preparation of this plan, please check all dimensions, shapes and compass bearings before making any decisions reliant upon them.
 Produced by Plangix



Directions

Viewings

Viewings by arrangement only. Call 0208 859 1100 to make an appointment.

Council Tax Band

E

EPC Rating:

D

Energy Efficiency Rating		Current	Potential
<i>Very energy efficient - lower running costs</i>			
(92 plus) A			84
(81-91) B			
(69-80) C			
(55-68) D		65	
(39-54) E			
(21-38) F			
(1-20) G			
<i>Not energy efficient - higher running costs</i>			
England & Wales		EU Directive 2002/91/EC	