



49 Ravenscroft Crescent, Mottingham, London, SE9 4LL

£219,950

- One Bedroom
- Parking
- No Onward Chain
- First Floor Maisonette
- Garden
- EPC Rating C

49 Ravenscroft Crescent, London SE9 4LL

A spacious and light one bedroom first floor maisonette situated within a popular development in Mottingham. The property is generously proportioned providing just over 500 square feet of living accommodation which includes a 13'7" reception room, double bedroom, plus a 8'8" kitchen. There is also your own private garden area plus parking. Ravenscroft crescent is well located for the village as well as bus routes and a couple of train station options. A great property in a popular pocket of south east London. No chain.

Tenure - Leasehold 121 years
Service Charge - £1056 PA - £88 PM
Ground Rent - £200.00 PA
Council Tax - Bromley Band C



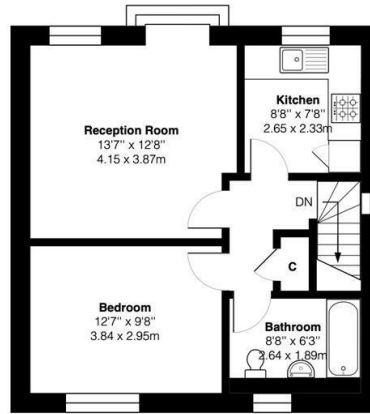
Council Tax Band: C



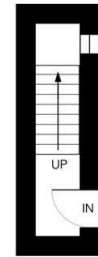


Ravenscroft Crescent, SE9

Approximate Gross Internal Area = 545 sq ft / 50.7 sq m



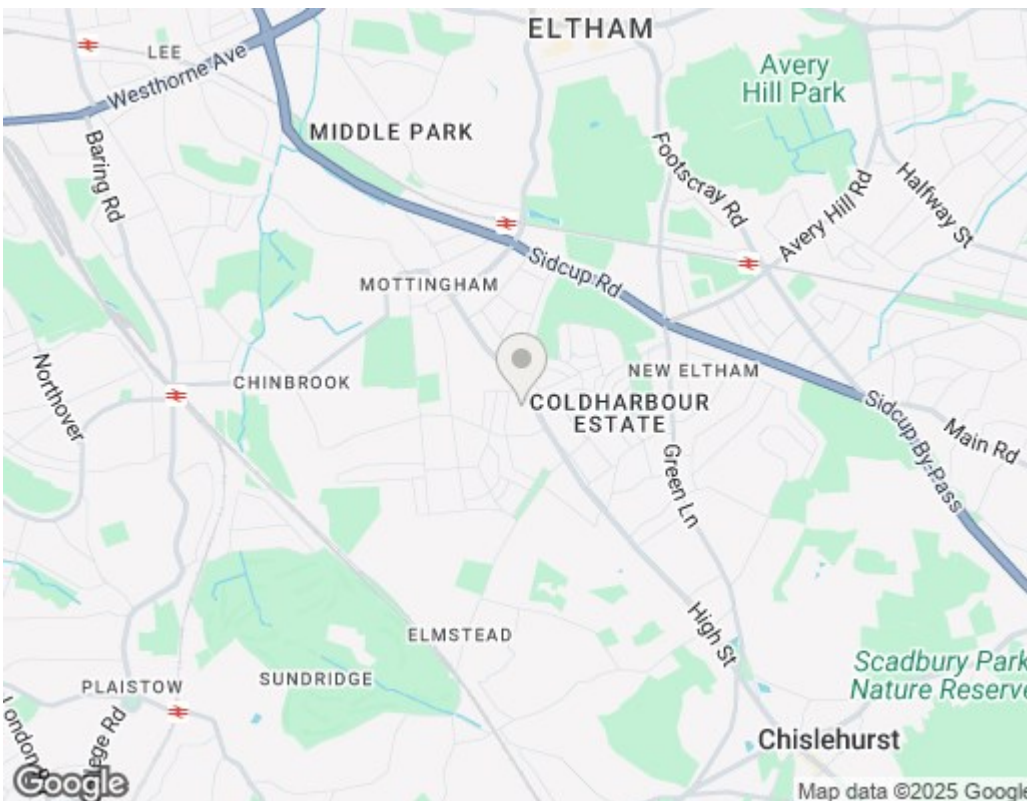
IrwinScott



First Floor

Ground Floor

This plan is for layout guidance only and not drawn to scale unless stated. Window and door openings are approximate. Whilst every care is taken in the preparation of this plan, we would advise interested parties to check all dimensions, shapes and compass bearings prior to making any decisions reliant upon them. No liability is accepted for any errors.
By Prime Square Photography / Copyright 2025



Viewings

Viewings by arrangement only.
Call 0208 859 1100 to make an appointment.

EPC Rating:

C

Energy Efficiency Rating		Current	Potential
Very energy efficient - lower running costs			
(92 plus) A			
(81-91) B			
(69-80) C		72	75
(55-68) D			
(39-54) E			
(21-38) F			
(1-20) G			
Not energy efficient - higher running costs			
England & Wales		EU Directive 2002/91/EC	