



22 Model Farm Close, Mottingham, London, SE9 4DR

£295,000

- Two Bedrooms
- Garage
- Popular Location
- Rear Garden
- First Floor Maisonette
- EPC Rating C

22 Model Farm Close, London SE9 4DR

Oakwood are pleased to offer to the market this delightful TWO BEDROOM FIRST FLOOR MAISONETTE. Located within a very popular cul-de-sac the property offers a 13'1" reception room, two well proportioned bedrooms, an 8'3" kitchen and a bathroom. There is a lawned garden to the rear plus a garage. A fantastic purchase in a desirable location. No onward chain.

Tenure - Share of freehold - 84 years

Service Charge - £0.00 PA (As and when work required)

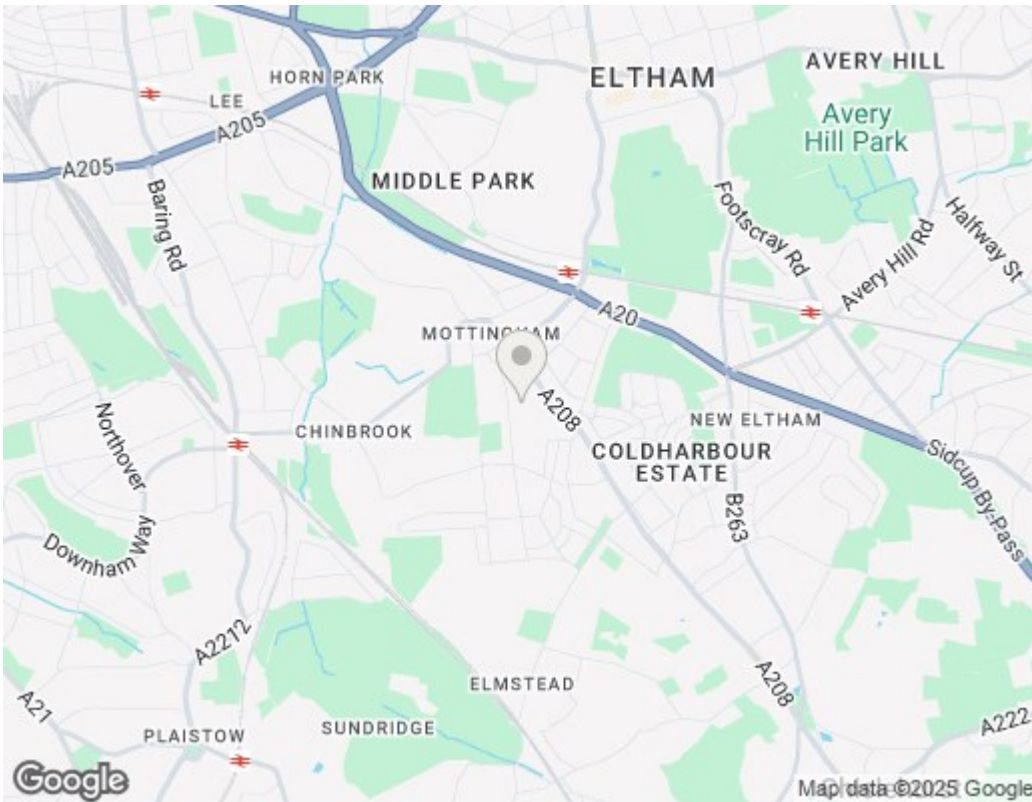
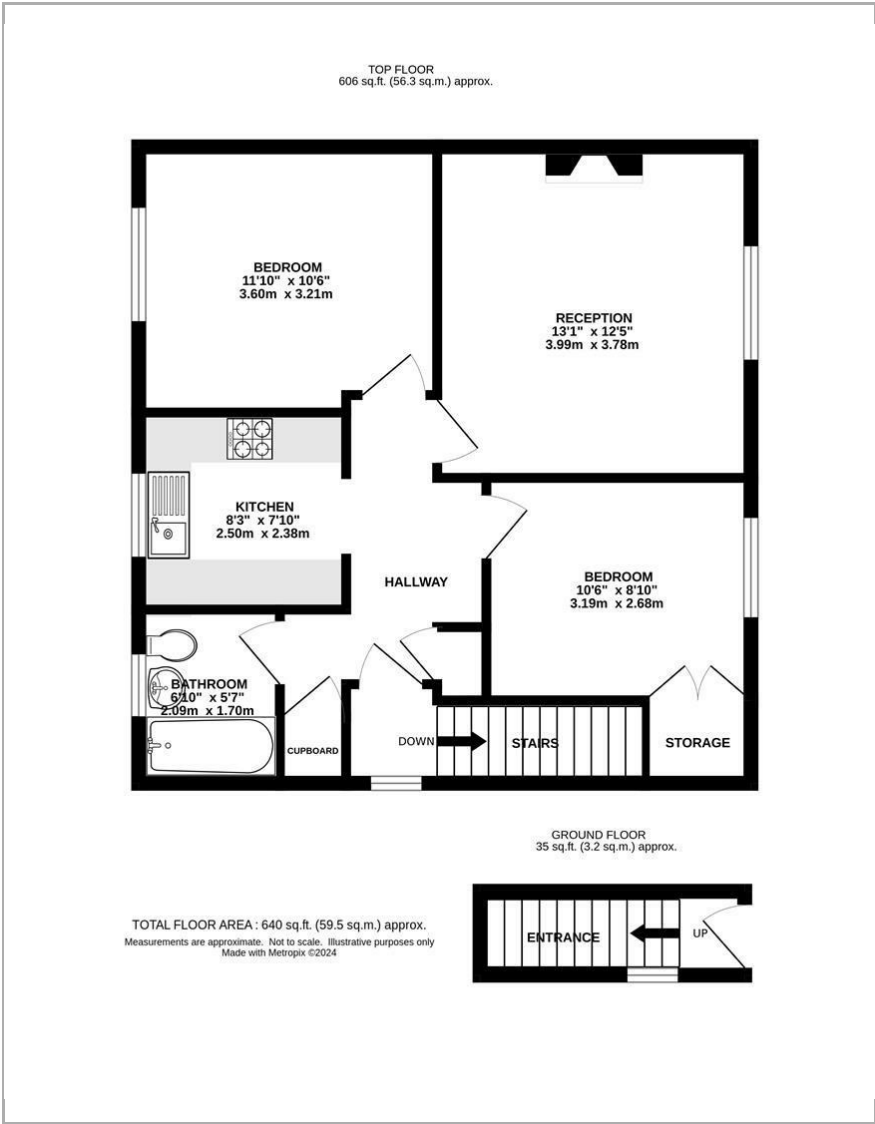
Ground Rent - N/A

Council Tax - Bromley Band C



Council Tax Band: C





Viewings

Viewings by arrangement only.
Call 0208 859 1100 to make an appointment.

EPC Rating:

C

Energy Efficiency Rating		Current	Potential
Very energy efficient - lower running costs			
(92 plus) A			
(81-91) B			
(69-80) C		71	76
(55-68) D			
(39-54) E			
(21-38) F			
(1-20) G			
Not energy efficient - higher running costs			
England & Wales		EU Directive 2002/91/EC	