



16 Beaconsfield Road, London, SE9 4DP

£695,000

- Five Bedrooms
- Annex To Side
- 22'1 Kitchen/Diner
- Semi Detached House
- Off Street Parking
- EPC Rating C



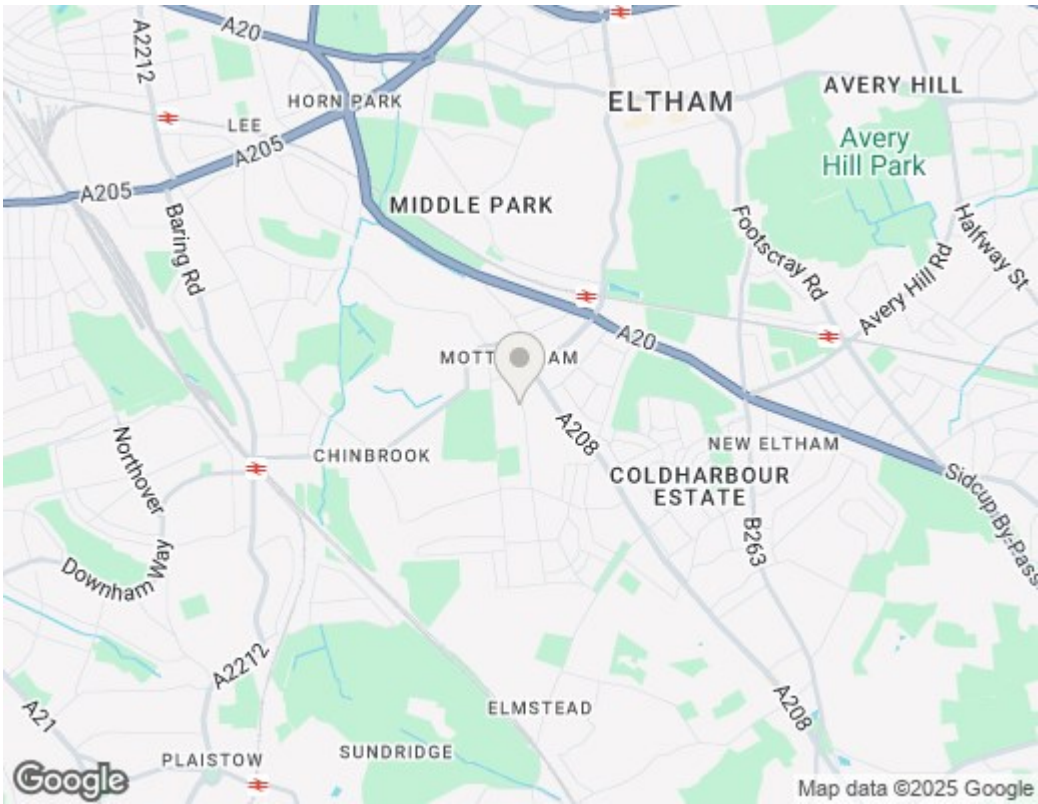
# 16 Beaconsfield Road, London SE9 4DP

Offering accommodation arranged over three floors and situated within easy reach of Mottingham Village is this five bedroom semi detached house. The ground floor has a 14'8 reception room at the front and at the rear you will find the ever popular open plan kitchen/diner measuring an impressive 22'1 with bi-folding doors to the garden. The first floor has three bedrooms plus a family bathroom. The original loft space now has two bedrooms, a shower room and lots of storage in the eaves. That's not the end of the accommodation though! There is also a self contained annex to the side with living space, shower room and bedroom. An extremely versatile addition to this home. Contact our sales team to arrange an internal inspection.

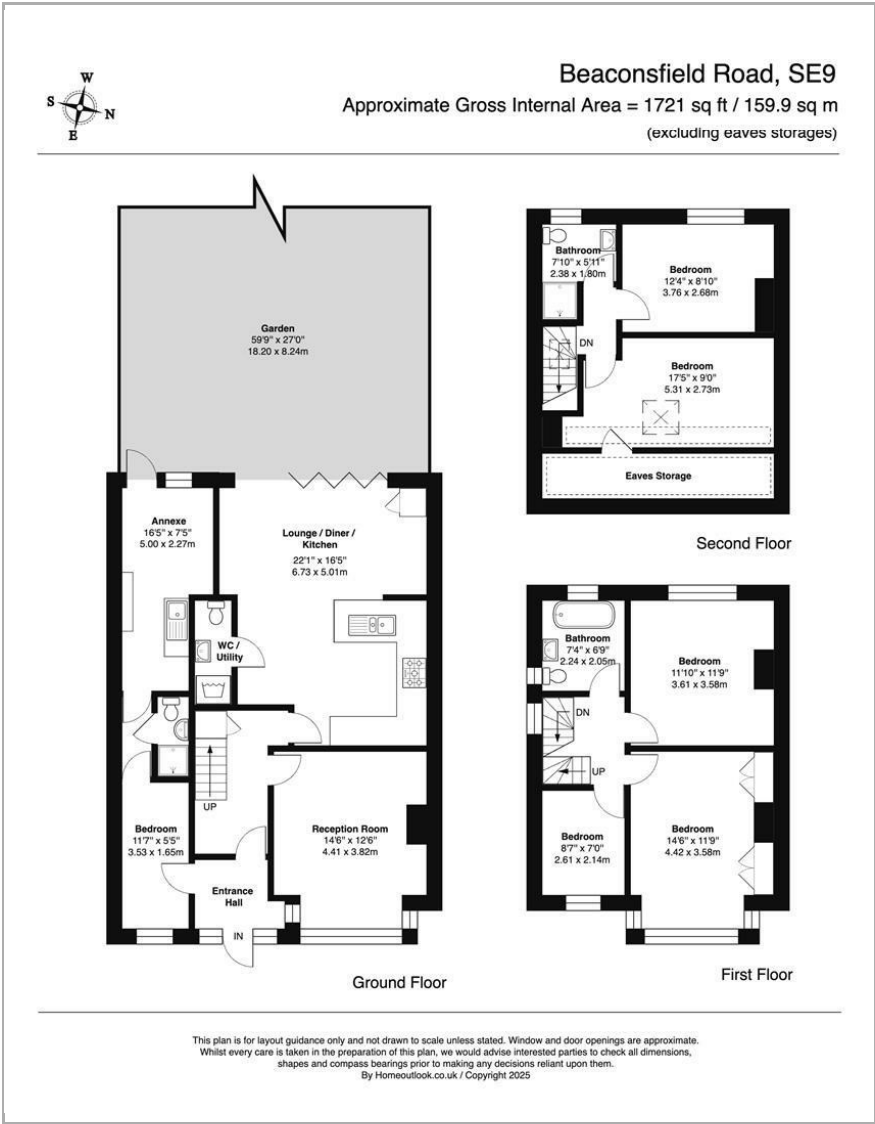


Council Tax Band: E





377 Footscray Road, London, SE9 2DR  
0208 859 1100

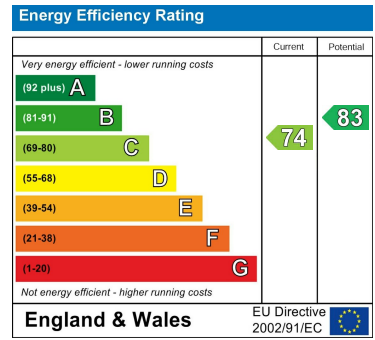


## Viewings

Viewings by arrangement only.  
Call 0208 859 1100 to make an appointment.

## EPC Rating:

C



info@irwinscott.com  
www.irwinscott.com