



10 Sycamore Close, London, SE9 4RD

Offers Over £175,000

- One Bedroom
- Modern Kitchen
- No Chain
- 14'5 Lounge
- Gated Retirement Development
- Vacant Possession

10 Sycamore Close, London SE9 4RD

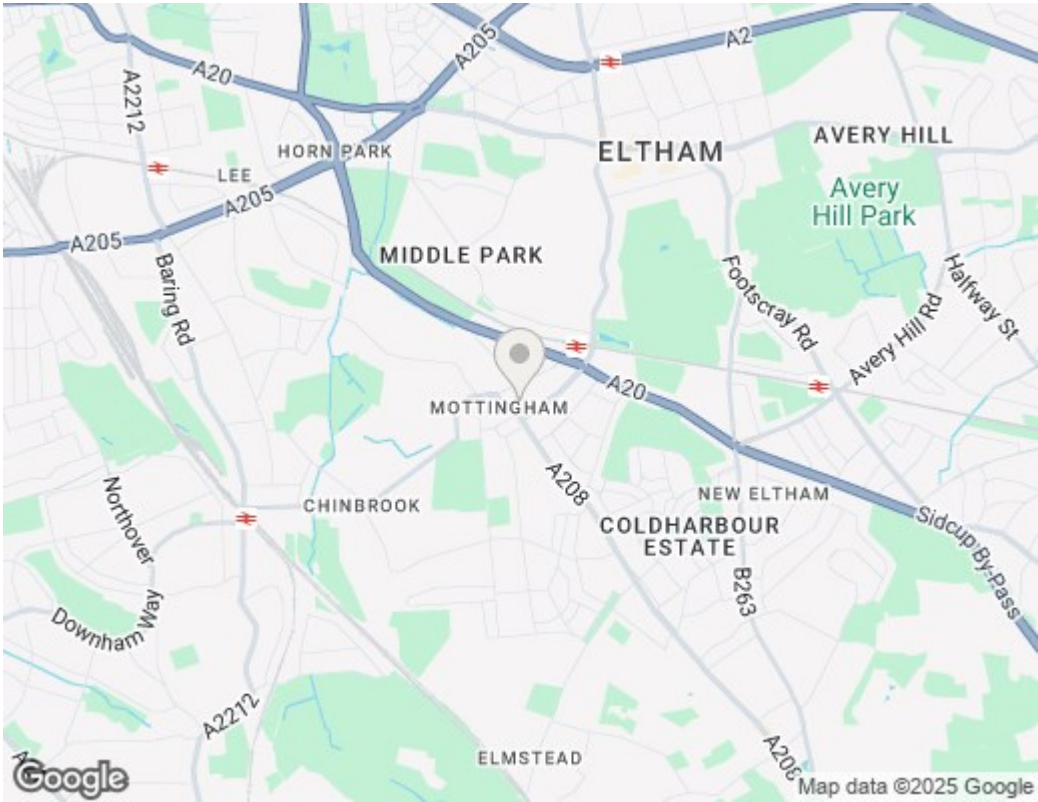
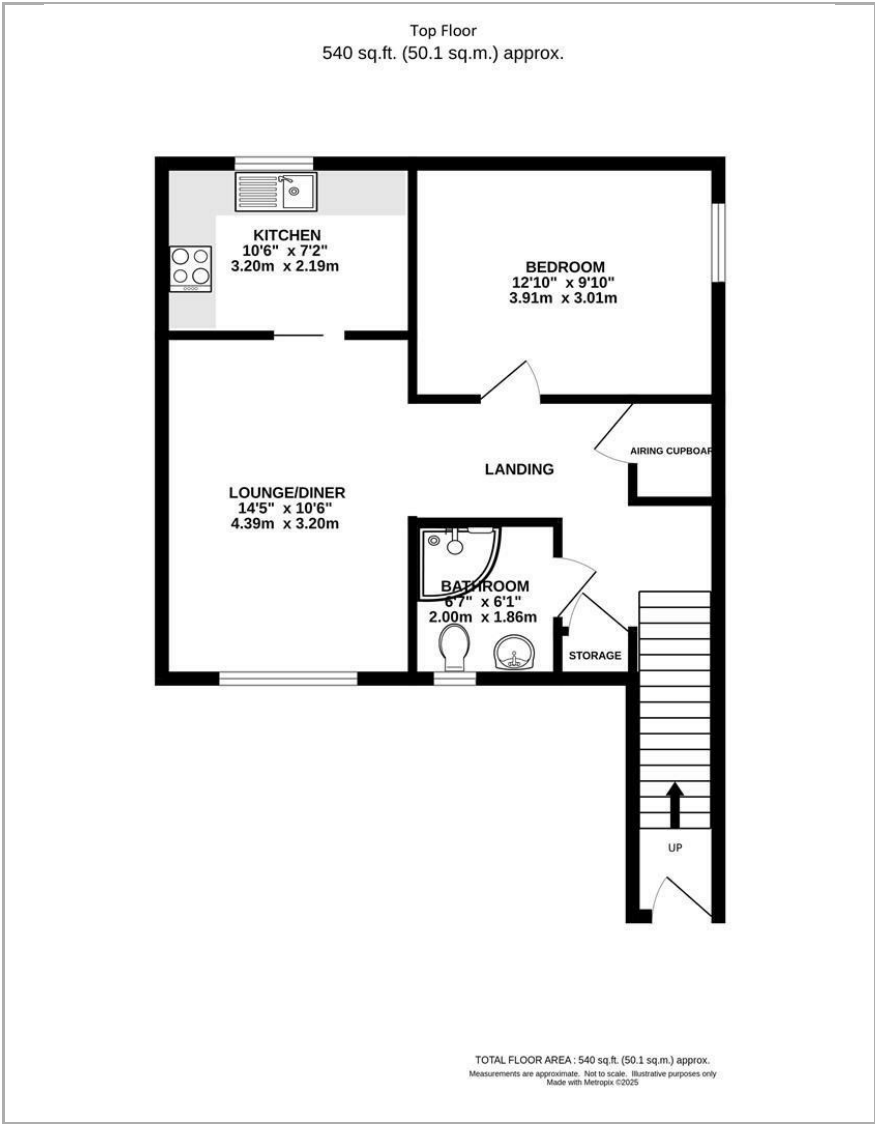
ONE BEDROOM FIRST FLOOR RETIREMENT MAISONETTE (minimum age over 55) located in a well presented gated development. Boasts a 14'5 lounge, 10'6 modern kitchen with integrated washer/dryer, fridge freezer, oven and microwave , 12'10 bedroom and modern shower room. Other benefits include, double glazing, warden on site and communal gardens. Situated close to local shops and amenities and offered with vacant possession and no onward chain. Parking permit available upon request.

Tenure - Leasehold 90 years
Service Charge - £2600.00 PA
Ground Rent - £375.00 PA
Council Tax - Greenwich Band B



Council Tax Band: B





Viewings

Viewings by arrangement only.
Call 0208 859 1100 to make an appointment.

EPC Rating:

D

Energy Efficiency Rating		
	Current	Potential
Very energy efficient - lower running costs		
(92 plus) A		
(81-91) B		
(69-80) C		
(55-68) D		
(39-54) E		
(21-38) F		
(1-20) G		
Not energy efficient - higher running costs		
England & Wales	EU Directive 2002/91/EC	