



18 Preston Drive, Bexleyheath, DA7 4UQ

£535,000

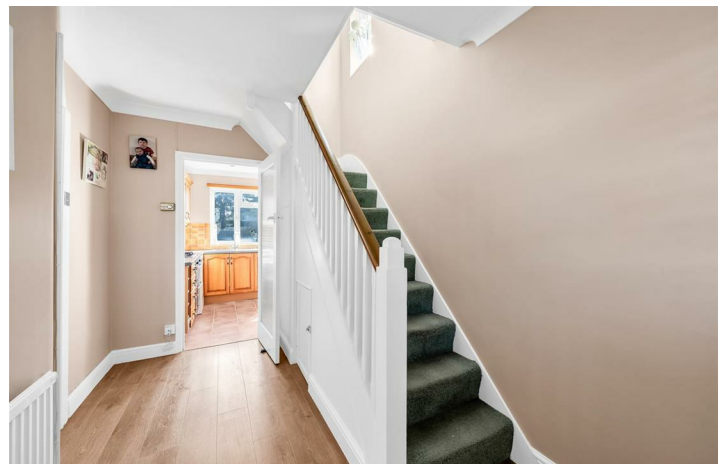
- Three Bedrooms
- Popular Location
- 18'3 Kitchen/Diner
- Off Street Parking
- Semi Detached House
- EPC Rating TBC

18 Preston Drive, Bexleyheath DA7 4UQ

A delightful three bedroom family home located along a popular residential road. The property has been extended on the ground floor but still has plenty of potential to be developed further. The ground floor has a 23'3" reception room plus an 18'3" kitchen/diner. The first floor has three bedrooms plus a bathroom. Off street parking is available at the front and there is a well proportioned lawned garden to the rear. Popular school and transport links are close by. An internal inspection is highly recommended.



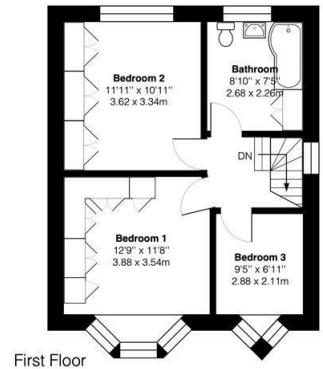
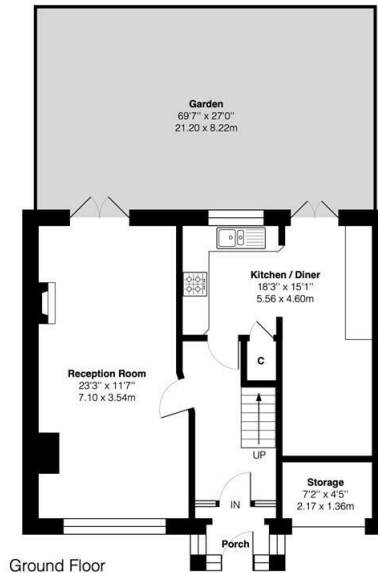
Council Tax Band: E



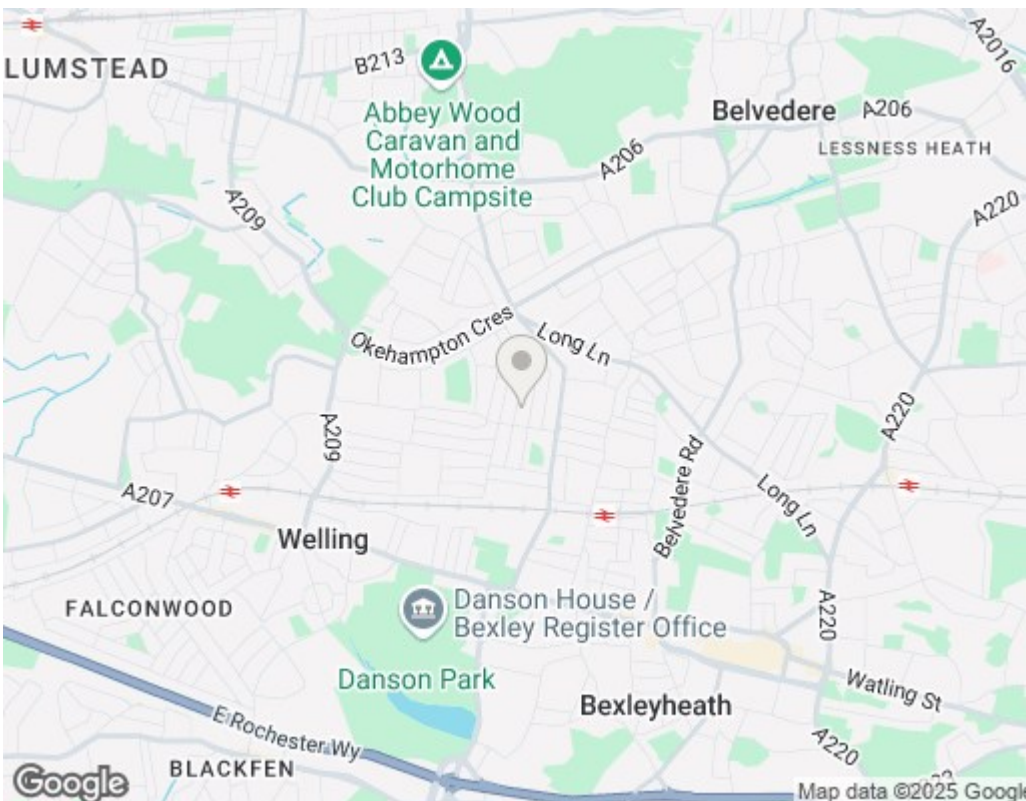


Preston Drive, DA7

Approximate Gross Internal Area = 1091 sq ft / 101.3 sq m



This plan is for layout guidance only and not drawn to scale unless stated. Window and door openings are approximate. Whilst every care is taken in the preparation of this plan, we would advise interested parties to check all dimensions, shapes and compass bearings prior to making any decisions reliant upon them.
By Homeoutlook.co.uk / Copyright 2025



Viewings

Viewings by arrangement only.
Call 0208 859 1100 to make an appointment.

EPC Rating:

D

Energy Efficiency Rating		Current	Potential
Very energy efficient - lower running costs			
(92 plus) A			84
(81-91) B			
(69-80) C			
(55-68) D		59	
(39-54) E			
(21-38) F			
(1-20) G			
Not energy efficient - higher running costs			
England & Wales		EU Directive 2002/91/EC	