



7 Geraint Road, Bromley, BR1 5DU

Offers Over £375,000

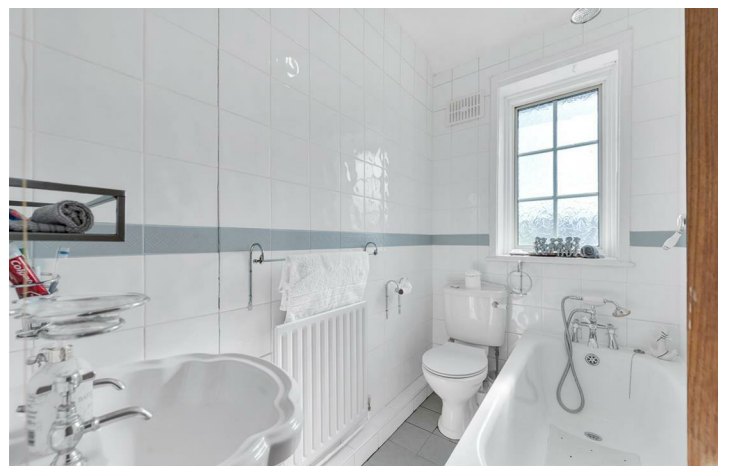
- Two Double Bedrooms
- Off Street Parking
- Modern Bathroom
- Popular Location
- Conservatory
- Gas Fired Central Heating
- Ideal For the Commuter

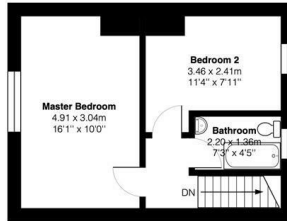
7 Geraint Road, Bromley BR1 5DU

Minutes walk from Grove Park Main Line Railway station we are pleased to offer this well presented two bedroom middle terrace house. Boasting a conservatory and Off street parking to the front makes this an ideal home for the young commuter just starting out.

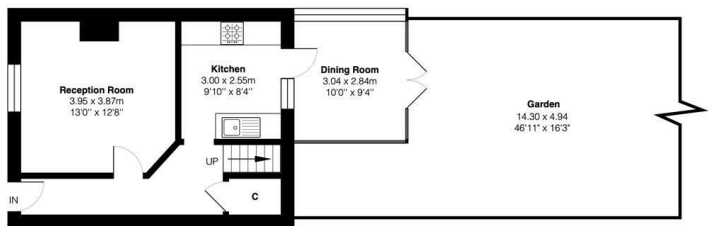


Council Tax Band: C





First Floor



Ground Floor

This plan is for layout guidance only and not drawn to scale unless stated. Window and door openings are approximate. Whilst every care is taken in the preparation of this plan, we would advise interested parties to check all dimensions, shapes and compass bearings prior to making any decisions reliant upon them.



Gerait Road BR1

Total Area: 75.3 m²... 811 ft²

IrwinScott



Viewings

Viewings by arrangement only.
Call 0208 859 1100 to make an appointment.

EPC Rating:

C

Energy Efficiency Rating		
	Current	Potential
Very energy efficient - lower running costs		
(92 plus) A		86
(81-91) B		
(69-80) C		
(55-68) D		
(39-54) E		
(21-38) F		
(1-20) G		
Not energy efficient - higher running costs		
England & Wales		EU Directive 2002/91/EC