



31 Passey Place, London, SE9 5DA

£220,000

- Two Bedrooms
- Lease In Excess Of 140 Years
- Garage
- Split Level Maisonette
- Convenient Location
- EPC Rating D

31 Passey Place, London SE9 5DA

Situated in the heart of Eltham High Street with it's array of shopping and leisure facilities is this two bedroom split level maisonette. Located above commercial premises the accommodation is not only spacious but also well presented. The kitchen and bathroom are both in good order and the decor and flooring are neutral and there is double glazing and gas central heating. There is also a garage en-bloc. Great for an investment portfolio or for a first time buyer looking to take their first steps onto the property ladder.

Tenure - Leasehold - 144 years

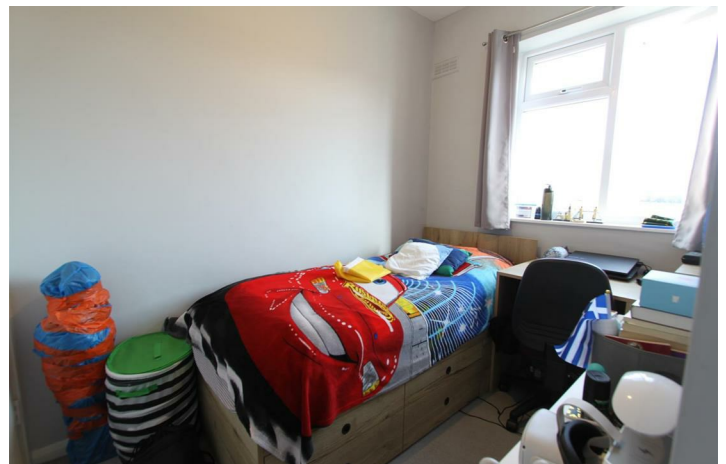
Service Charge - £0.00 pa (As and when work required)

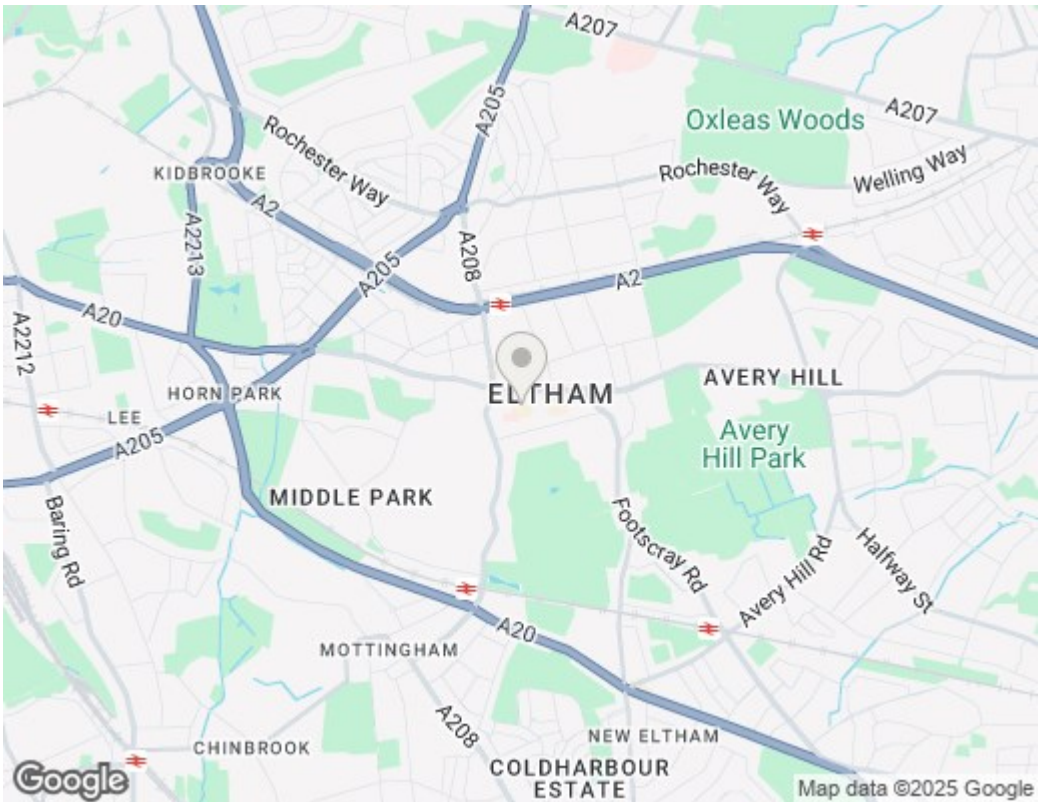
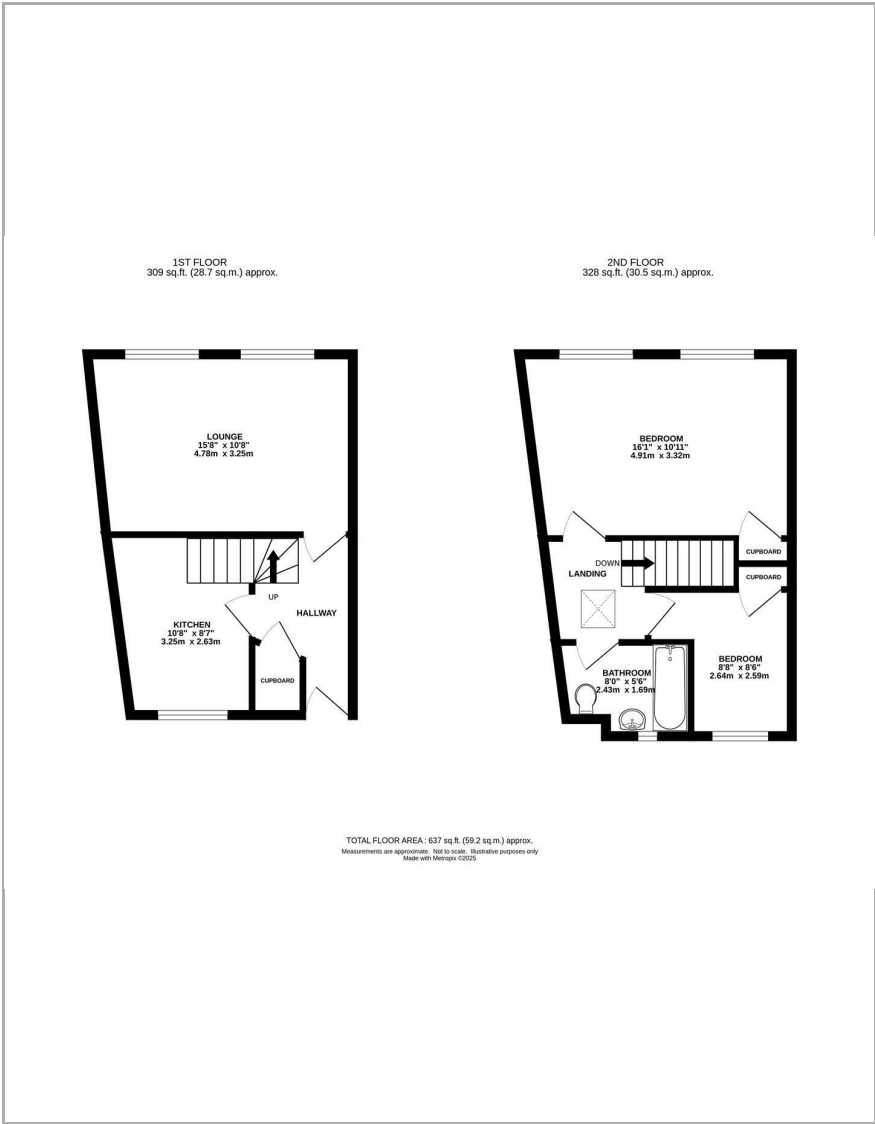
Ground Rent - £100 pa

Council Tax - Greenwich Band C



Council Tax Band: C





Viewings

Viewings by arrangement only.
Call 0208 859 1100 to make an appointment.

EPC Rating:

D

Energy Efficiency Rating		
	Current	Potential
Very energy efficient - lower running costs		
(92 plus) A		
(81-91) B		
(69-80) C		
(55-68) D		
(39-54) E		
(21-38) F		
(1-20) G		
Not energy efficient - higher running costs		
England & Wales	65	75
		EU Directive 2002/91/EC