



86 Woodside Avenue, Chislehurst, BR7 6BS

Price Guide £800,000

- Five Bedrooms
- Stunning Rear Views
- 15'1 Kitchen
- Extended Family Home
- 16'9 Dining Room
- Off Street Parking

86 Woodside Avenue, Chislehurst BR7 6BS

GUIDE PRICE £800,000 to £850,000 Just a short stroll from the fashionable Chislehurst Village is this stunning five bedroom semi detached house. The property offers beautifully appointed living space with todays modern family in mind. The ground floor has a 13'5 reception room, a 16'9 dining room, that opens onto a 15'1 kitchen which is perfect for a busy lifestyle of preparing dinner and keeping an eye on homework! The first floor has three bedrooms plus a family bathroom. The original loft space has been converted into a master bedroom with an en suite shower room and has views overlooking local horses fields. There are regular bus routes nearby offering good connections to the local area. The location is also well served by good local schools and green open spaces. Viewing highly recommended.



5



2



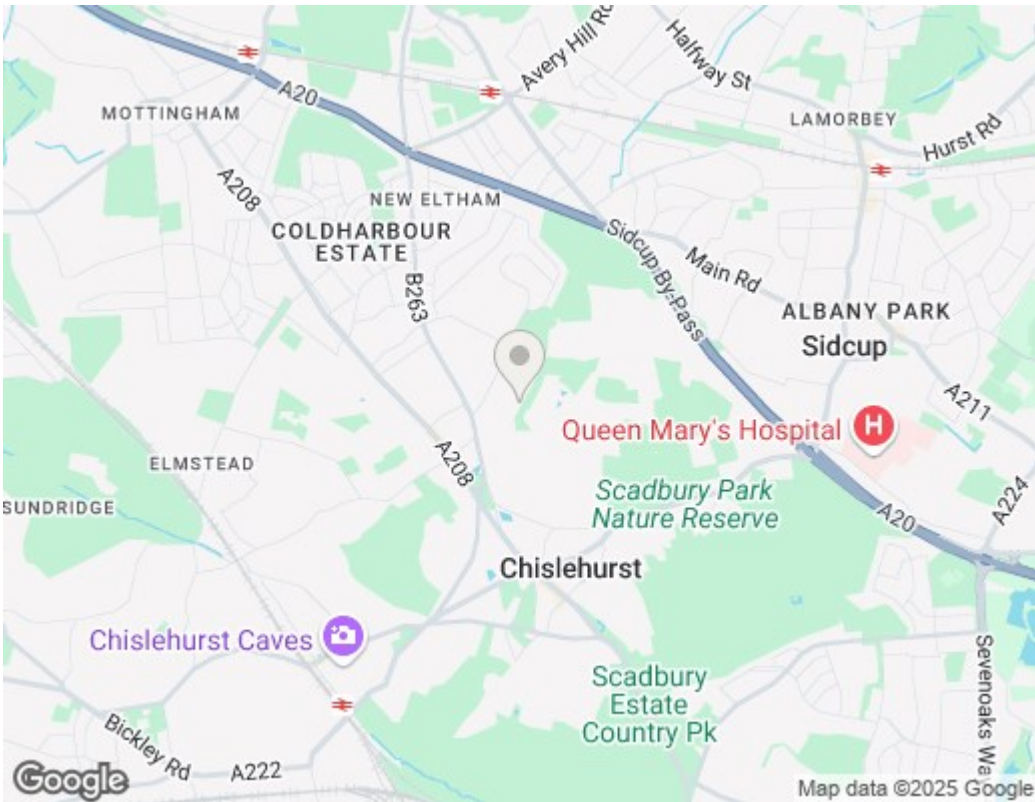
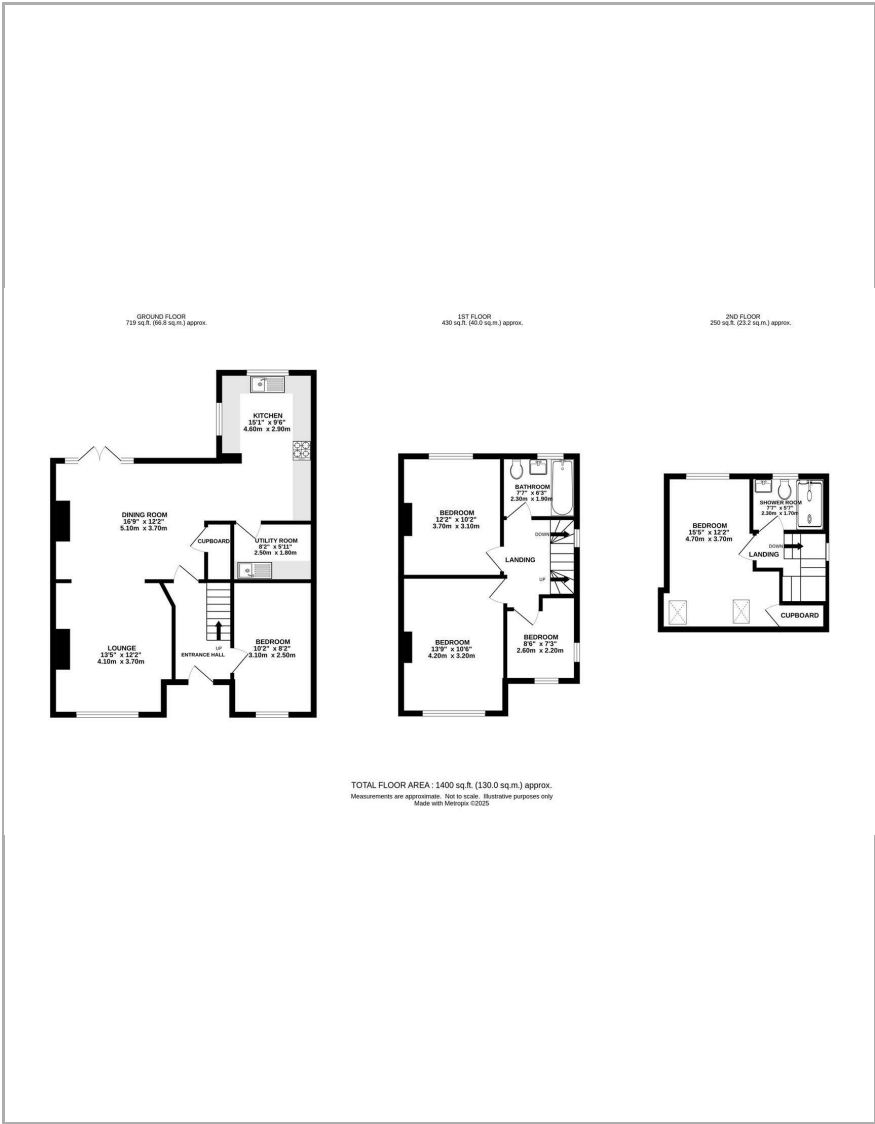
2



D

Council Tax Band: E





Viewings

Viewings by arrangement only.
Call 0208 859 1100 to make an appointment.

EPC Rating:

D

Energy Efficiency Rating		
	Current	Potential
Very energy efficient - lower running costs		
(92 plus) A		
(81-91) B		
(69-80) C		
(55-68) D		
(39-54) E		
(21-38) F		
(1-20) G		
Not energy efficient - higher running costs		
England & Wales	EU Directive 2002/91/EC	