



140 Woodside Road, Sidcup, DA15 7JG

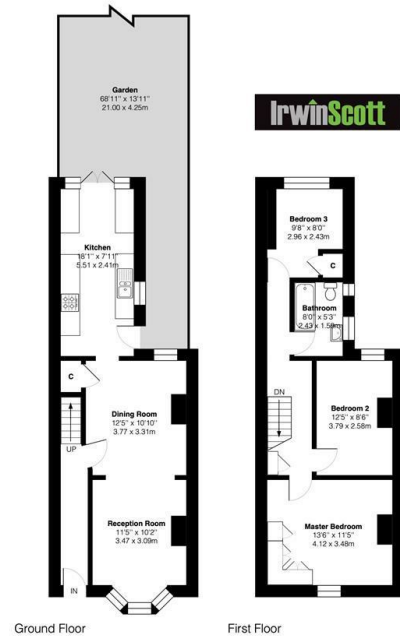
£475,000

- Three Bedroom Period Property
- Modern Kitchen/Breakfast Room
- Off Street Parking
- Brick Fronted
- Upstairs Bathroom
- 68ft Rear Garden
- Two Receptions
- Gas Central Heating
- No Onward Chain

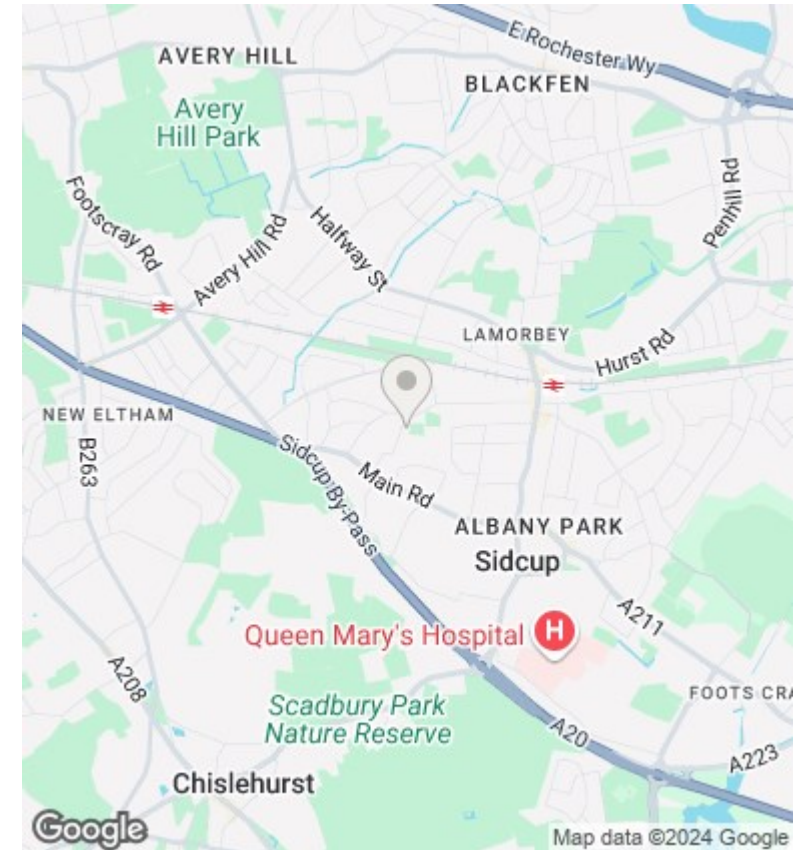


Woodside Road, DA15

Approximate Gross Internal Area = 964 sq ft / 89.5 sq m



This plan is for layout guidance only and not drawn to scale unless stated. Window and door openings are approximate. Whilst every care is taken in the preparation of this plan, we would advise interested parties to check all dimensions, shapes and compass bearings prior to making any decisions reliant upon them.
By Homecoutlook.co.uk / Copyright 2024



Directions

Viewings

Viewings by arrangement only. Call 0208 859 1100 to make an appointment.

Council Tax Band

D

EPC Rating:

D

Energy Efficiency Rating		
	Current	Potential
Very energy efficient - lower running costs		
(92 plus) A		89
(81-91) B		
(69-80) C	67	
(55-68) D		
(39-54) E		
(21-38) F		
(1-20) G		
Not energy efficient - higher running costs		
England & Wales		EU Directive 2002/91/EC