



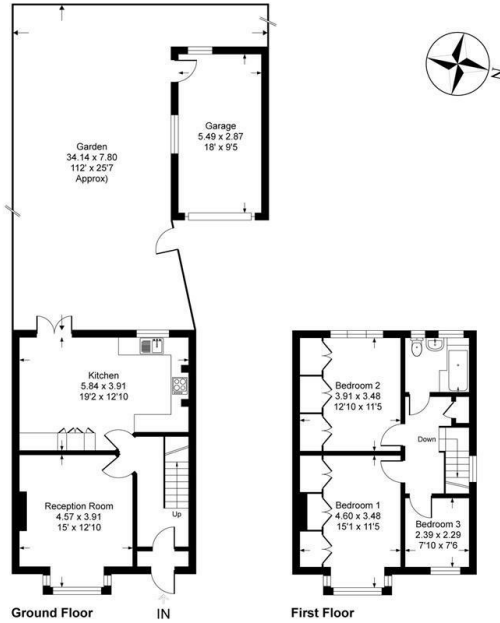
75 Parkview Road, London, SE9 3QR

£599,995

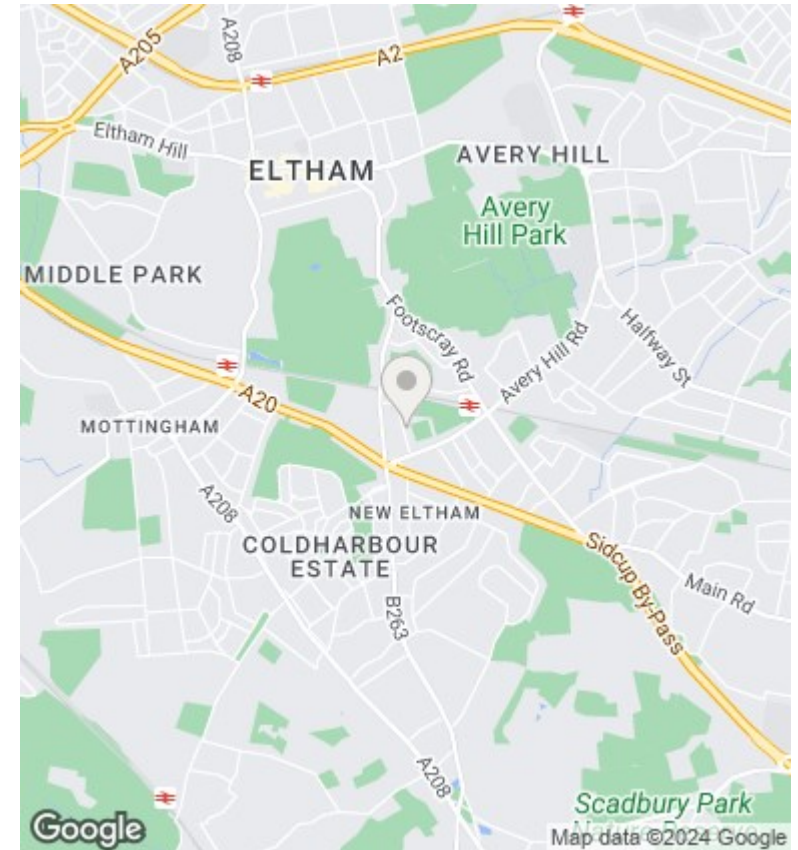
- Remodelled Throughout
- Fitted Kitchen Diner
- Tastefully Decorated Throughout
- Ideal For The Commuter
- Upvc Double Glazing
- Modern Bathroom
- Easy Access To Major Transport Links
- Gas Fired Central Heating
- Block Paved Driveway
- Not Too Be Missed

Parkview Road, SE9

Approximate Gross Internal Area = 95 sq m / 1026 sq ft
 Garage Gross Internal Area = 16 sq m / 170 sq ft
 Total Gross Internal Area = 111 sq m / 1196 sq ft



This plan is for layout guidance only. Not drawn to scale unless stated. Windows and door openings are approximate. Whilst every care is taken in the preparation of this plan, please check all dimensions, shapes and compass bearings before making any decisions reliant upon them.
 Produced by Planpix



Directions

Viewings

Viewings by arrangement only. Call 0208 859 1100 to make an appointment.

Council Tax Band

D

EPC Rating:

D

Energy Efficiency Rating		Current	Potential
Very energy efficient - lower running costs			
(92 plus) A			85
(81-91) B			
(69-80) C			
(55-68) D		62	
(39-54) E			
(21-38) F			
(1-20) G			
Not energy efficient - higher running costs			
England & Wales		EU Directive 2002/91/EC	