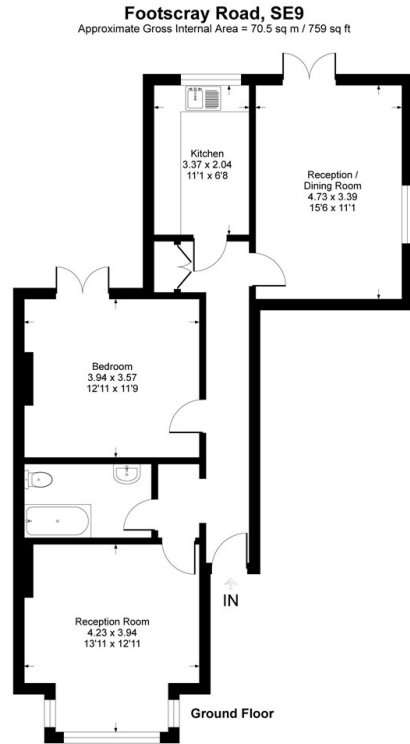




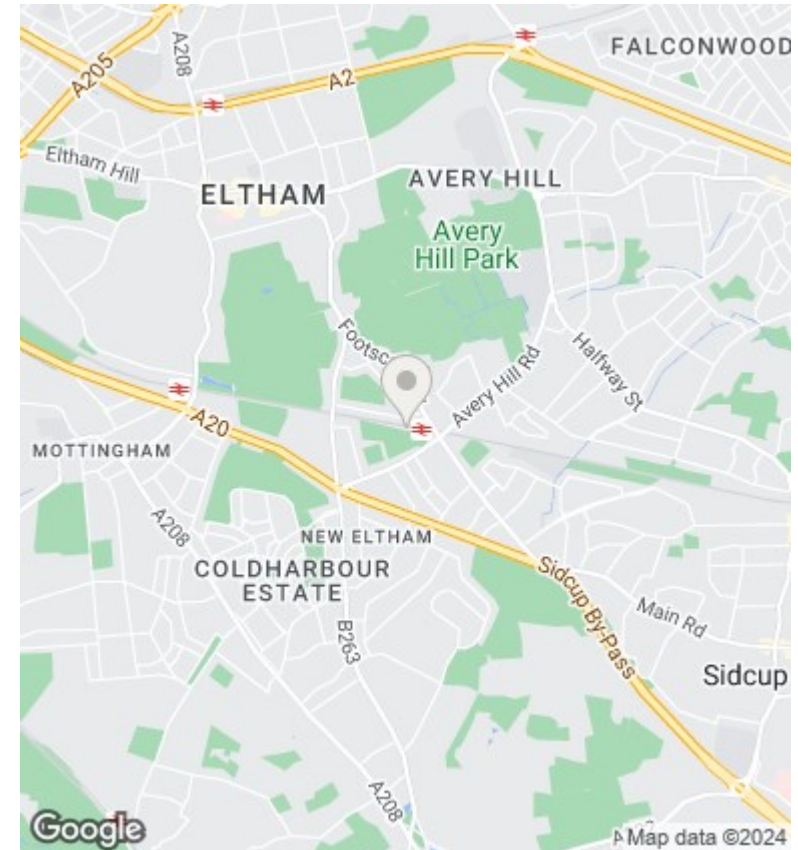
Flat A, 421 Footscray Road, New Eltham, London, SE9 3UL

£375,000

- Stunning Ground Floor Apartment
- Modern Bathroom Suite
- Close To Amenities
- 2 Double Bedrooms
- Secure Parking
- Share Of Freehold
- Fitted Kitchen
- Close to Station
- Must Be Seen



This plan is for layout guidance only. Not drawn to scale unless stated. Windows and door openings are approximate. Whilst every care is taken in the preparation of this plan, please check all dimensions, shapes and compass bearings before making any decisions reliant upon them.
Produced by Plangix



Directions

Viewings

Viewings by arrangement only. Call 0208 859 1100 to make an appointment.

Council Tax Band

C

EPC Rating:

D

Energy Efficiency Rating		Current	Potential
<i>Very energy efficient - lower running costs</i>			
(92 plus) A			
(81-91) B			76
(69-80) C			
(55-68) D		61	
(39-54) E			
(21-38) F			
(1-20) G			
<i>Not energy efficient - higher running costs</i>			
England & Wales		EU Directive 2002/91/EC	