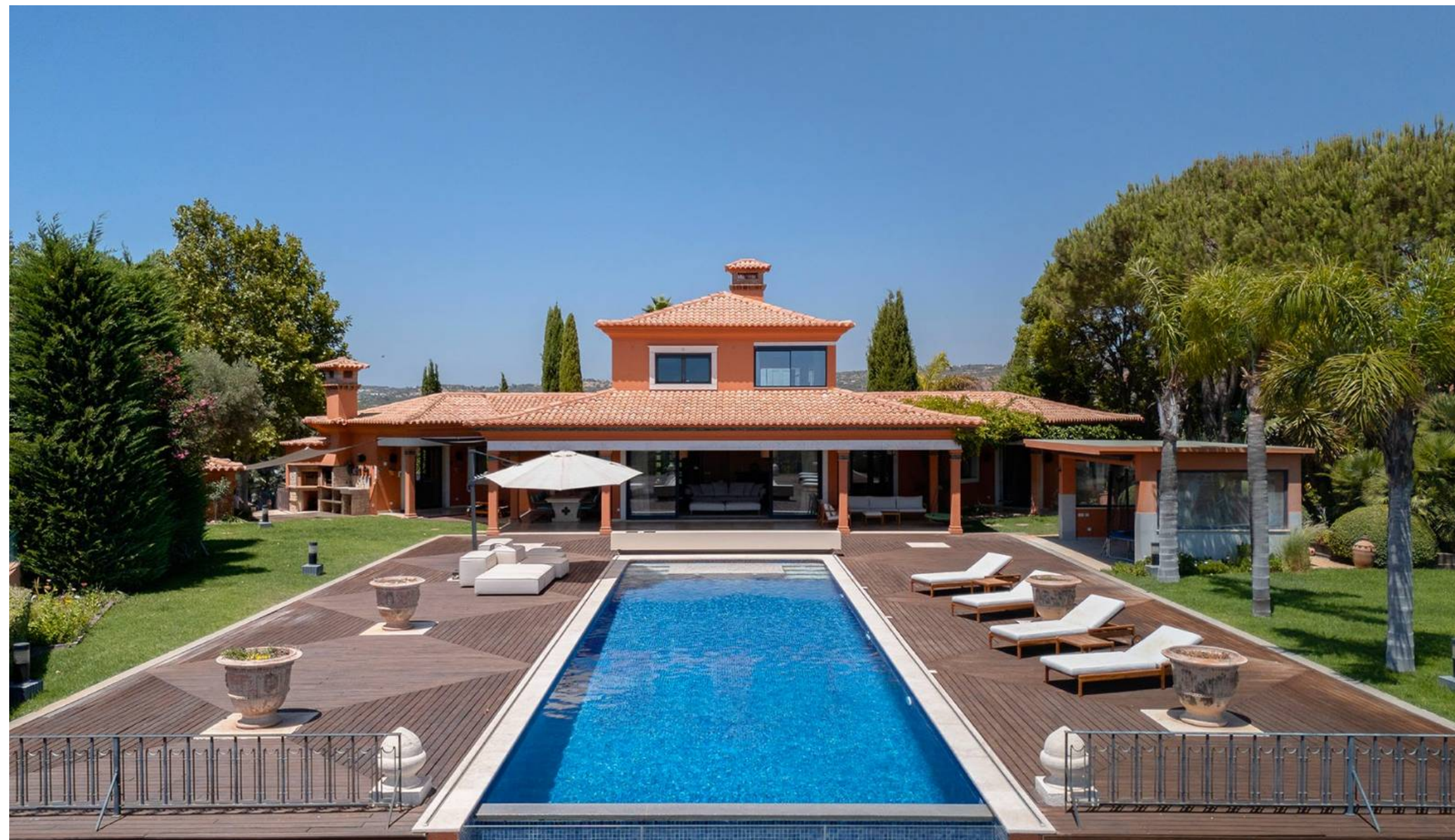


Boliqueime · Algarve

VILLA WITH PANORAMIC VIEWS



Mapro Sociedade Mediação Imobiliária Lda.

Edifício Mapro · Av. Alm. Mendes Cabeçadas · 8135-106 Almancil · Algarve, Portugal

Tel. (+351) 289 390 880 · info@maprorealestate.com

AMI License 317

www.maprorealestate.com

MAPRO | **Knight Frank**
REAL ESTATE · IMOBILIÁRIA



VILLA WITH PANORAMIC VIEWS

An enchanting five-bedroom villa perfectly situated near Boliqueime, offering breathtaking sea views and an exceptional outdoor living experience in the heart of the Algarve.

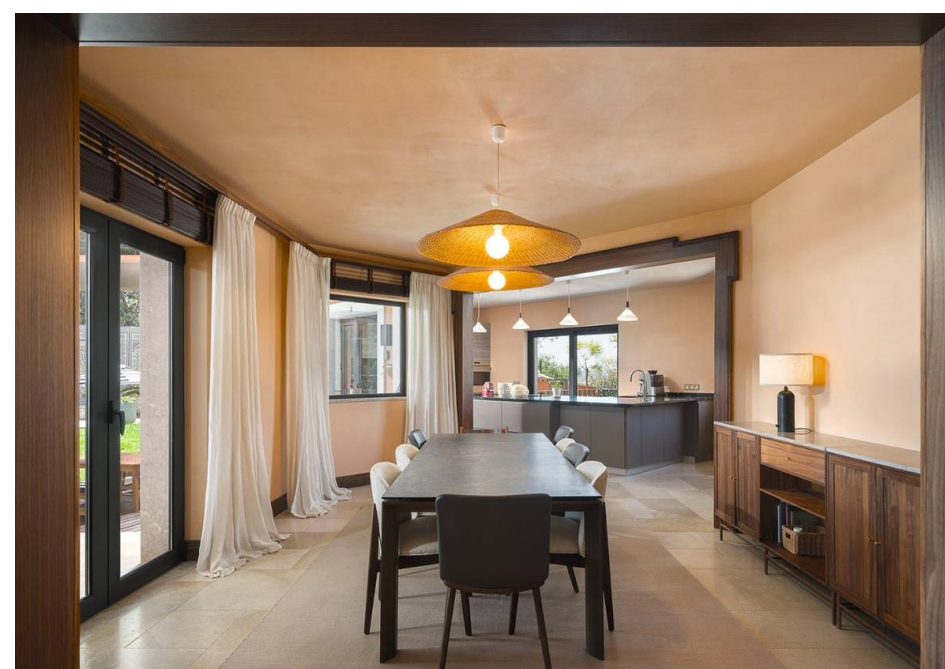
The entrance hall leads onto the spacious living room with a fireplace, offering stunning sea views and direct access to the outdoors. There is also a spacious office off the lounge which could be a snug. Adjacent to this area is the open-plan dining room and kitchen, complete with a Silestone peninsula, a Liebherr wine cooler and fridge, and a laundry area. This space opens onto two terraces, each with their own eating areas, perfect for alfresco dining. This floor also includes two en-suite bedrooms, and a guest bathroom.

The first floor boasts two further en-suite bedrooms, including the main bedroom, which features a fantastic closet and a private bathroom with a shower and an incredible bathtub with spectacular sea views.

The lower level comprises another en-suite bedroom with natural light and a spacious garage with room for multiple cars.

The property's outdoor areas are truly unforgettable, featuring a 17-metre infinity pool surrounded by the mature gardens featuring a water fountain, a pond and ample covered parking area with an electric car charging station.

Embrace the elegance and charm of this enchanting villa, designed to provide a luxurious and serene living environment with stunning panoramic views.





€ 5.250.000

PRICE

REF 3943

FACTS & FEATURES



744m²



9062m²



5



7



CLASSE ENERGETICA

Ownership: Private

Constr. Year 2007

Garden Fruit Trees, Fountain, Waterfall, Lake, Mature, Landscaped, Terrace, Automatic Irrigation

Swimming Pool Infinity

Borehole Yes

Garage Multiple, Carport

Heating Under-floor (Hydraulic)

Air Conditioning Split Units

Alarm Video Entry System

Fireplace Open

TV System Yes

Furnished Negotiable

Extras Video Entry, Electric Car Charger, Solar Panels, Electric Shutters, Electric Gate

Features Lake, BBQ

Views Coastal, Countryside, Distant Sea, Panoramic, City

Beach 16Km

Golf 6Km

Airport 26Km



IMPORTANT NOTICE: These details are guidelines only. They do not form part of any contact and may change at any time without prior notice.

