

Vilamoura · Algarve
**CONTEMPORARY
LIVING**



Mapro Sociedade Mediação Imobiliária Lda.

Edifício Mapro · Av. Alm. Mendes Cabeçadas · 8135-106 Almancil · Algarve, Portugal
Tel. (+351) 289 390 880 · info@maprorealestate.com
AMI License 317
www.maprorealestate.com





CONTEMPORARY LIVING

Stunning semi-detached five-bedroom villa located in the prestigious Vilamoura area, walking distance to the marina and local amenities. This expansive property spans across three floors providing ample space and privacy. A central light well floods the interior with natural light, creating an ambience of brightness and warmth throughout the property.

The ground floor presents an impressive layout, featuring a private parking area, a grand entrance hall that sets the tone for the home's elegance, a bedroom with its private bathroom, and an additional bathroom for guests' convenience. The spacious living room is bathed in natural light and seamlessly connects to the outdoor pool area, creating a harmonious indoor-outdoor flow. The modern kitchen, fully fitted and equipped, offers direct access to dining and entertaining spaces.

Stepping outside, the inviting swimming pool is perfect for leisurely swims or basking in the Algarve sunshine. Adjacent to the pool, a covered terrace equipped with a barbecue offers an ideal setting for alfresco dining and entertaining guests.

On the first floor, there are three bedrooms, each boasting its own ensuite bathroom. Two of these bedrooms enjoy access to a shared terrace, where you can unwind and soak in panoramic views of the surrounding landscape. As you step into the lower level, there's a versatile storage area, a covered patio ideal for outdoor relaxation, and a comfortable ensuite bedroom, perfect for accommodating guests or family members seeking privacy.





€ 2.150.000

PRICE

REF 3895

FACTS & FEATURES



336m²



601m²



5



6



CLASSE ENERGETICA

Ownership: Private

Garden Yes

Swimming Pool Yes

Heating Duct System,
Radiators

Air Conditioning Duct
System

Fireplace Yes

Furnished No

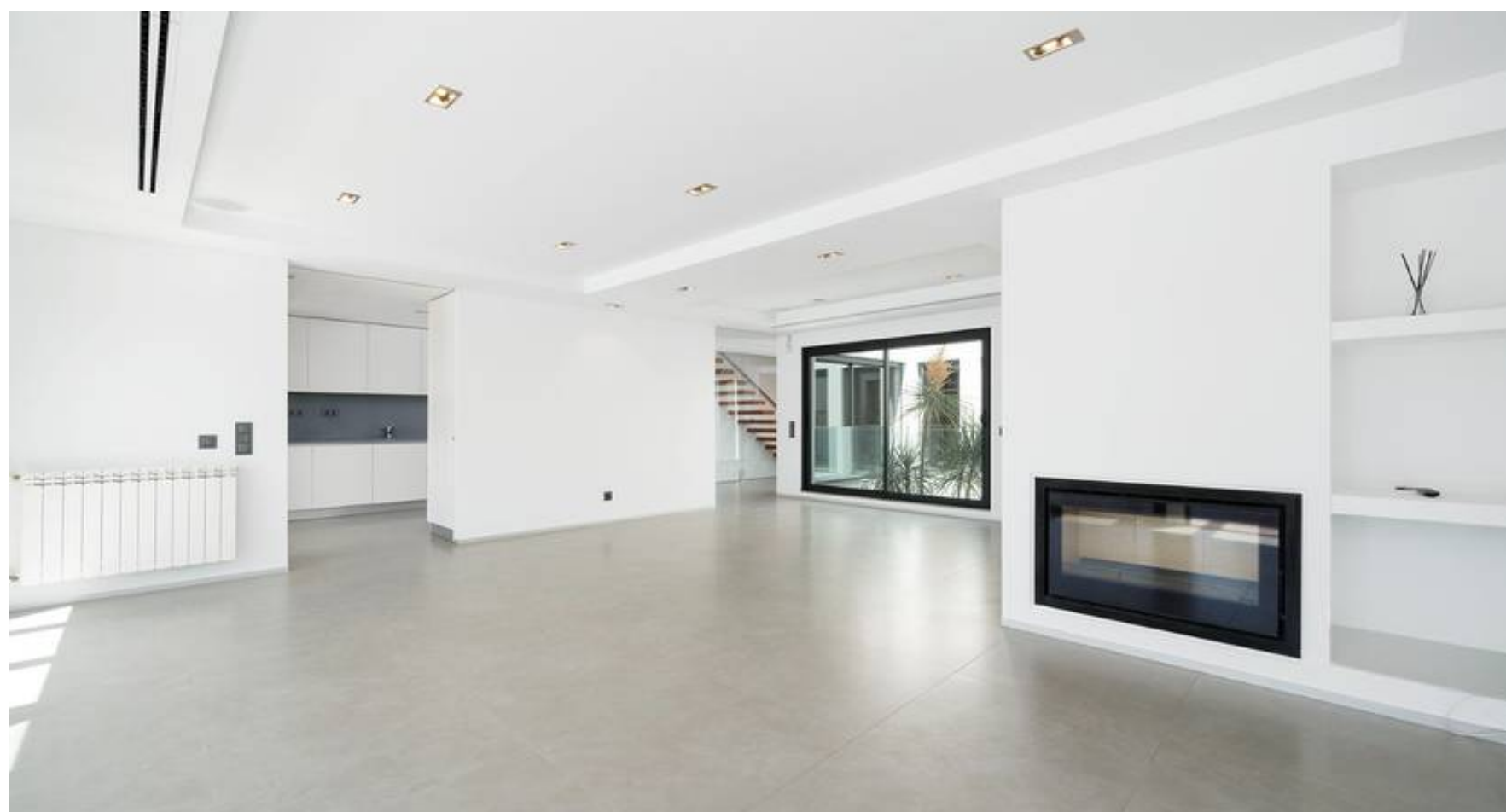
Extras Solar Panels

Features BBQ

Beach Walking Distance

Golf Walking Distance

Airport 20Km



IMPORTANT NOTICE: These details are guidelines only. They do not form part of any contact and may change at any time without prior notice.

