

Tavira · Algarve

A SUSTAINABLE COUNTRY HOUSE



Mapro Sociedade Mediação Imobiliária Lda.

Edifício Mapro · Av. Alm. Mendes Cabeçadas · 8135-106 Almancil · Algarve, Portugal
Tel. (+351) 289 390 880 · info@maprorealestate.com
AMI License 317
www.maprorealestate.com

MAPRO | **Knight Frank**
REAL ESTATE · IMOBILIÁRIA



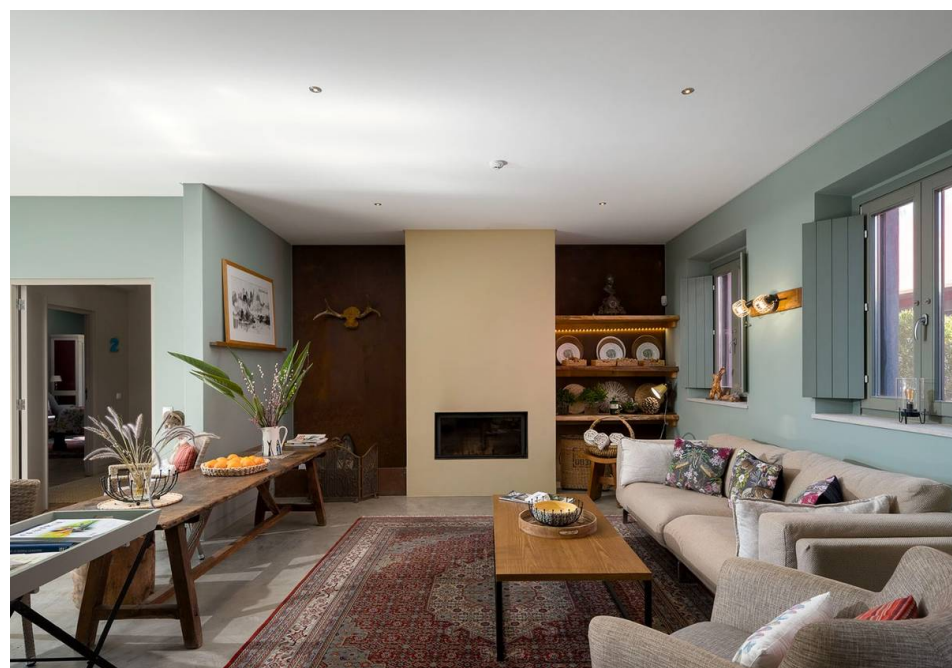
A SUSTAINABLE COUNTRY HOUSE

A secluded luxury country house near the beautiful historic coastal town of Tavira. Originally a family home and farm, Fazenda Nova has been transformed in a mix of traditional Portuguese architectural design with modern vintage twist in the interior styling, surrounded with its romantic gardens and pathways.

Designed as a boutique country house, the main house consists of 8 bedroom suites, 5 of which have their own private terrace/garden. The grand reception room with a fireplace and bar area also features a mezzanine which leads out to a south facing terrace with sea views. The lounge opens onto an eating area with another log fire. The professional kitchen is fully equipped and accesses a large storage and laundry area.

The exterior has a spacious BBQ eating area and log fire on one side. There are 7 more bedroom suites around the main house with separate access. The cleverly designed landscape includes an infinity pool and a relaxation area with double sunbeds. There is a borehole maintaining the 40 different variety of fruit trees and a sustainable vegetable garden. A family haven with character and originality.

Tavira is a charming historic town just a 20min drive away. The perfect combination of beaches and culture whilst still offering contemporary cuisines and modern amenities, including 3 very well maintained golf courses.





€ 6.750.000

PRICE

REF 1079

FACTS & FEATURES



956m²



103.920m²



15



19



CLASSE ENERGETICA

Ownership: Private

Constr. Year 2009

Garden Fruit Trees,
Landscaped

Swimming Pool Heated,
Salt Water

Borehole Yes

Garage Parking Facilities,
Carport

Heating Under-floor
(Water+Elec.)

Air Conditioning Ducted,
Split Units

Alarm Yes

Fireplace Wood burner

Furnished Negotiable

Extras Solar Panels,
Wooden Shutters, Surround
Sound

Features Bar, Games Room,
BBQ

Views Green Zone

Beach 9Km

Golf 22Km

Airport 30Km



IMPORTANT NOTICE: These details are guidelines only. They do not form part of any contact and may change at any time without prior notice.

