



Directions

Viewings

Viewings by arrangement only. Call 01753593888 to make an appointment.

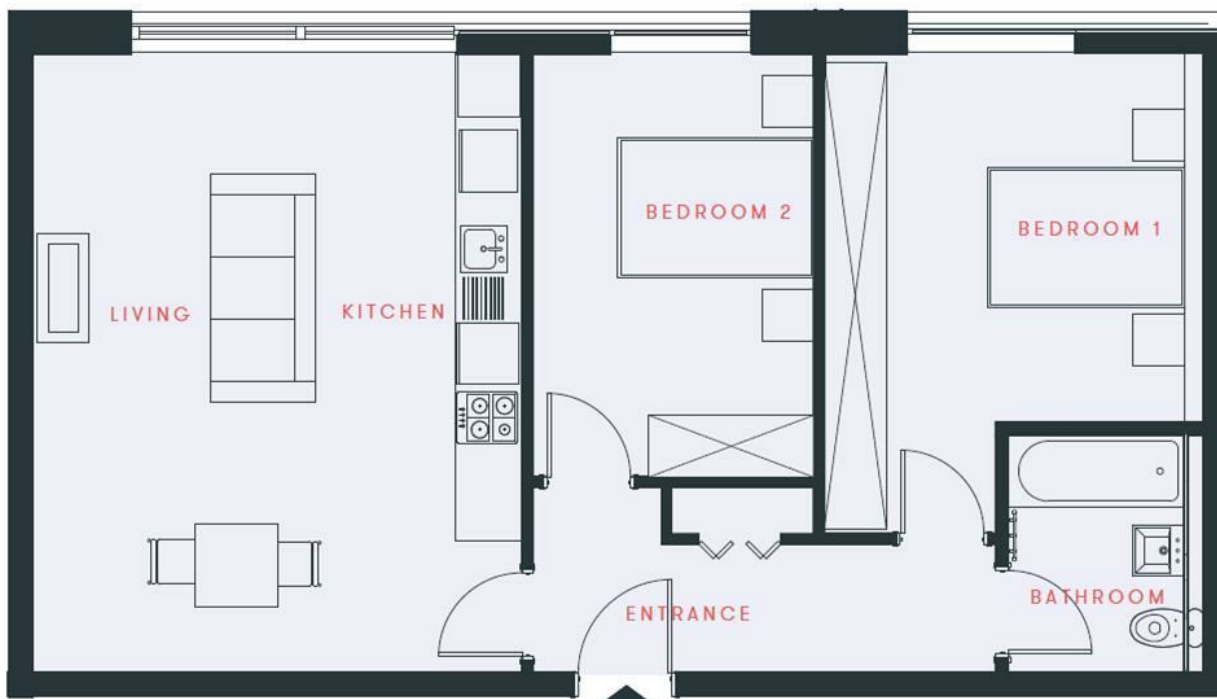
EPC Rating

C

Energy Efficiency Rating		Current	Potential
Very energy efficient - lower running costs			
(92 plus) A			
(81-91) B			
(69-80) C		77	77
(55-68) D			
(39-54) E			
(21-38) F			
(1-20) G			
Not energy efficient - higher running costs			
England & Wales		EU Directive 2002/91/EC	

Ground Floor
Two bedroom

Total Space
68 sq m (731.94 sq ft)



Flat 26 Hurricane Court, Heron Drive, Langley, Berkshire, SL3 8FA

Price Guide £340,000

- STUNNING TWO BEDROOM APARTMENT
- PRIVATE COURTYARD
- EASY ACCESS TO M4 & M25 MOTORWAYS
- ALLOCATED PARKING SPACE
- GROUND FLOOR
- CLOSE-BY TO HEATHROW AIRPORT
- WALKING DISTANCE TO LANGLEY MAINLINE STATION
- *IMAGES FOR MARKETIN PURPOSES ONLY*

Flat 26 Hurricane Court, Langley SL3 8FA

The Flatman Partnership are delighted to present this ground floor 2 bedroom apartment in the stunning gated development of Hurricane Court with its very own resident's courtyard garden. It is situated in the heart of Langley and has easy access to Heathrow Airport, Elizabeth Line, and M4 & M25 Motorway Networks as well as being close to local amenities and local Ofsted-rated schools.

This well-presented modern apartment offers spacious living accommodation to the highest of standards featuring an entrance hall, open plan living room, fully fitted kitchen with integrated appliances, two double bedrooms luxury fully tiled shower room, central heating, and secure allocated parking.



Council Tax Band: C

