

Directions

Viewings

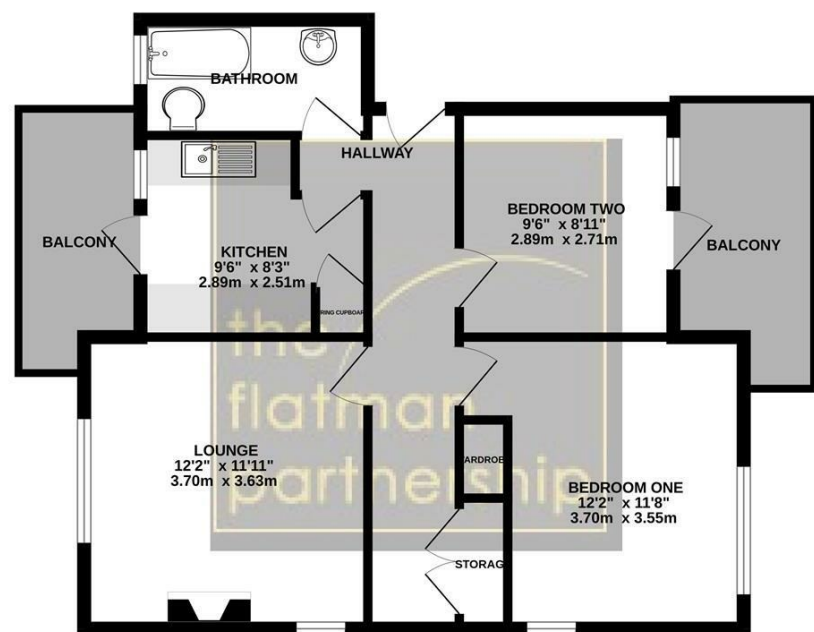
Viewings by arrangement only. Call 01753593888 to make an appointment.

EPC Rating

C

Energy Efficiency Rating		Current	Potential
Very energy efficient - lower running costs			
(92 plus) A			
(81-91) B			
(69-80) C		76	77
(55-68) D			
(39-54) E			
(21-38) F			
(1-20) G			
Not energy efficient - higher running costs			
England & Wales		EU Directive 2002/91/EC	

GROUND FLOOR
585 sq.ft. (54.3 sq.m.) approx.



TOTAL FLOOR AREA: 585 sq.ft. (54.3 sq.m.) approx.
While every effort has been made to ensure the accuracy of the floorplan contained here, measurements of doors, windows, rooms and any other items are approximate and no responsibility is taken for any error, omission or misstatement. This plan is for illustrative purposes only and should be used as a guide only by any prospective purchaser. The services, systems and appliances shown have not been tested and no guarantee is given as to their operability or efficiency can be given.
Made with Metropix CS023



44 Courts Road, Earley, Reading, Berkshire, RG6 7DH

£1,350 Per Month

- FIRST FLOOR APARTMENT
- TWO DOUBLE BEDROOMS
- UNFURNISHED
- AVAILABLE FROM MID-END SEPTEMBER
- RECENTLY REDECORATED
- TWO PRIVATE BALCONIES
- GARAGE INCLUDED
- GAS CENTRAL HEATING

44 Courts Road, Reading RG6 7DH

An exceptionally spacious first-floor apartment recently redecorated and conveniently located close to local amenities including many Ofsted-rated 'good' and 'outstanding' schools as well as being just 0.6 miles from Earley Train Station.

Features include an entrance hall, lounge, fully fitted kitchen, two double bedrooms, a good-sized family bathroom, two private balconies, gas central heating, and parking also included with the property is its own garage. This property comes unfurnished and is available from mid-end September 2024.



Council Tax Band: B

