

### Directions

### Viewings

Viewings by arrangement only. Call 01753593888 to make an appointment.

### EPC Rating

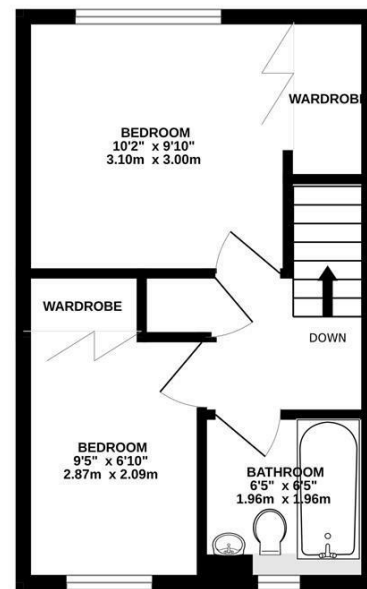
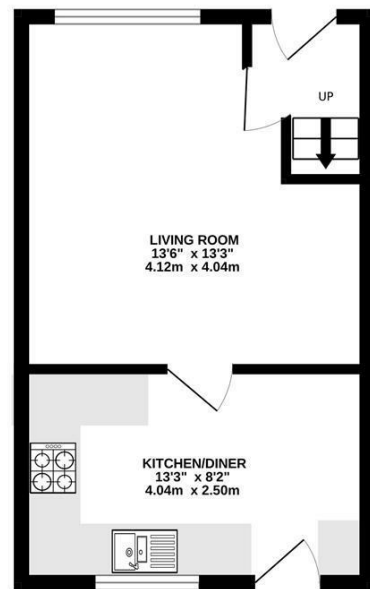
C

Energy Efficiency Rating		Current	Potential
Very energy efficient - lower running costs			
(92 plus) <b>A</b>			<b>94</b>
(81-91) <b>B</b>		<b>78</b>	
(69-80) <b>C</b>			
(55-68) <b>D</b>			
(39-54) <b>E</b>			
(21-38) <b>F</b>			
(1-20) <b>G</b>			
Not energy efficient - higher running costs			
<b>England &amp; Wales</b>		EU Directive 2002/91/EC	



GROUND FLOOR  
288 sq.ft. (26.8 sq.m.) approx.

1ST FLOOR  
288 sq.ft. (26.8 sq.m.) approx.



TOTAL FLOOR AREA: 577 sq.ft. (53.6 sq.m.) approx.  
Whilst every attempt has been made to ensure the accuracy of the floorplan contained here, measurements of doors, windows, rooms and any other items are approximate and no responsibility is taken for any error, omission or mis-statement. This plan is for illustrative purposes only and should be used as such by any prospective purchaser. The services, systems and appliances shown have not been tested and no guarantee as to their operability or efficiency can be given.  
Made with Metropix ©2024



34 Deverills Way, Langley, Berkshire, SL3 8WN

£1,600 PCM

- TERRACE FAMILY HOME
- BELVEDERE DEVELOPMENT
- ALLOCATED PARKING
- NEAR HEATHROW AIRPORT
- NEAR GOOD SCHOOLS
- GAS CENTRAL HEATING
- TWO DOUBLE BEDROOMS
- RESIDENTIAL LOCATION
- NEAR MOTORWAY LINKS
- AVAILABLE IMMEDIATELY

## 34 Deverills Way, Berkshire SL3 8WN

Immaculate terraced house in the sought-after residential location of the Belvedere Developments. Conveniently located within easy access to Heathrow Airport and major motorway links including the M4, M40 & M25, it is also close by to several Ofsted-rated good schools. Recently redecorated this property offers features including an entrance hall, a living room, an open plan kitchen/diner, two double bedrooms, a family bathroom, and a rear garden as well as two allocated parking spaces. This property comes unfurnished and is available immediately.



Council Tax Band: D

