



Directions

Viewings

Viewings by arrangement only. Call 01753593888 to make an appointment.

EPC Rating

D

Energy Efficiency Rating		Current	Potential
Very energy efficient - lower running costs			
(92 plus) A			91
(81-91) B			
(69-80) C			
(55-68) D		56	
(39-54) E			
(21-38) F			
(1-20) G			
Not energy efficient - higher running costs			
England & Wales		EU Directive 2002/91/EC	



Whilst every attempt has been made to ensure the accuracy of the floor plan contained here, measurements of doors, windows, rooms and any other items are approximate and no responsibility is taken for any error, omission, or mis-statement. This plan is for illustrative purposes only and should be used as such by any prospective purchaser. The services, systems and appliances shown have not been tested and no guarantee as to their operability or efficiency can be given
Made with Metropix ©2020



36 Meadowbrook Close, Colnbrook, Berkshire, SL3 0PA

£1,295 Per Month

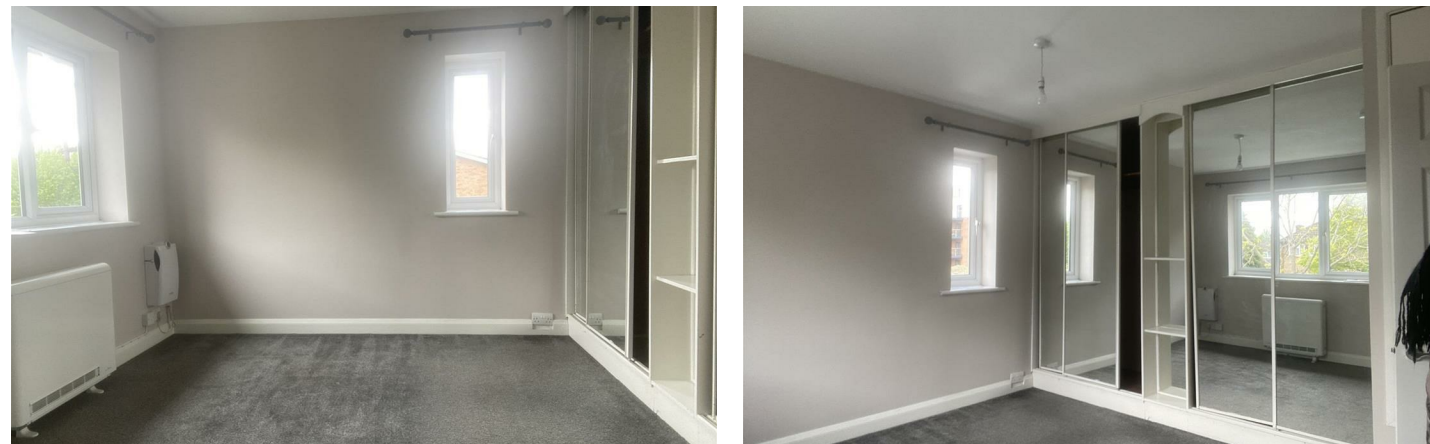
- STYLISH & MODERN
- STUNNING BATHROOM
- END OF TERRACE HOUSE
- ALLOCATED PARKING
- AVAILABLE IMMEDIATELY
- GARDEN
- ONE BEDROOM
- NEAR HEATHROW
- UNFURNISHED

36 Meadowbrook Close, Colnbrook SL3 0PA

The Flatman Partnership offers this one bedroom end of terrace house situated in a highly sought after cul de sac in the popular and quaint village of Colnbrook, conveniently located within easy access to Heathrow airport. Features include entrance porch, lounge/dining room, open plan fully fitted kitchen, extremely spacious double bedroom with fitted wardrobes, stunning bathroom, private garden and allocated parking. The property is UNFURNISHED and available immediately.



Council Tax Band: C



GROUND FLOOR

Entrance Hall

Lounge/Dining Room

Kitchen

FIRST FLOOR

Bedroom

Bathroom

OUTSIDE

Garden

Allocated Parking

Full Description

****Video Viewing Available On Request**** Stylish and modern one bedroom end of terrace house situated in a highly sought after cul de sac in the popular and quaint village of Colnbrook, conveniently located within easy access to Heathrow airport. Features include entrance porch, lounge/dining room, brand new open plan fully fitted kitchen, extremely spacious double bedroom with fitted wardrobes, stunning new bathroom, private garden and allocated parking. The property has new flooring throughout, is unfurnished and is available 15th March 2021.

Full Description.

****Video Viewing Available On Request**** Stylish and modern one bedroom end of terrace house situated in a highly sought after cul de sac in the popular and quaint village of Colnbrook, conveniently located within easy access to Heathrow airport. Features include entrance porch, lounge/dining room, brand new open plan fully fitted kitchen, extremely spacious double bedroom with fitted wardrobes, stunning new bathroom, private garden and allocated parking. The property has new flooring throughout, is unfurnished and is available 15th March 2021.