

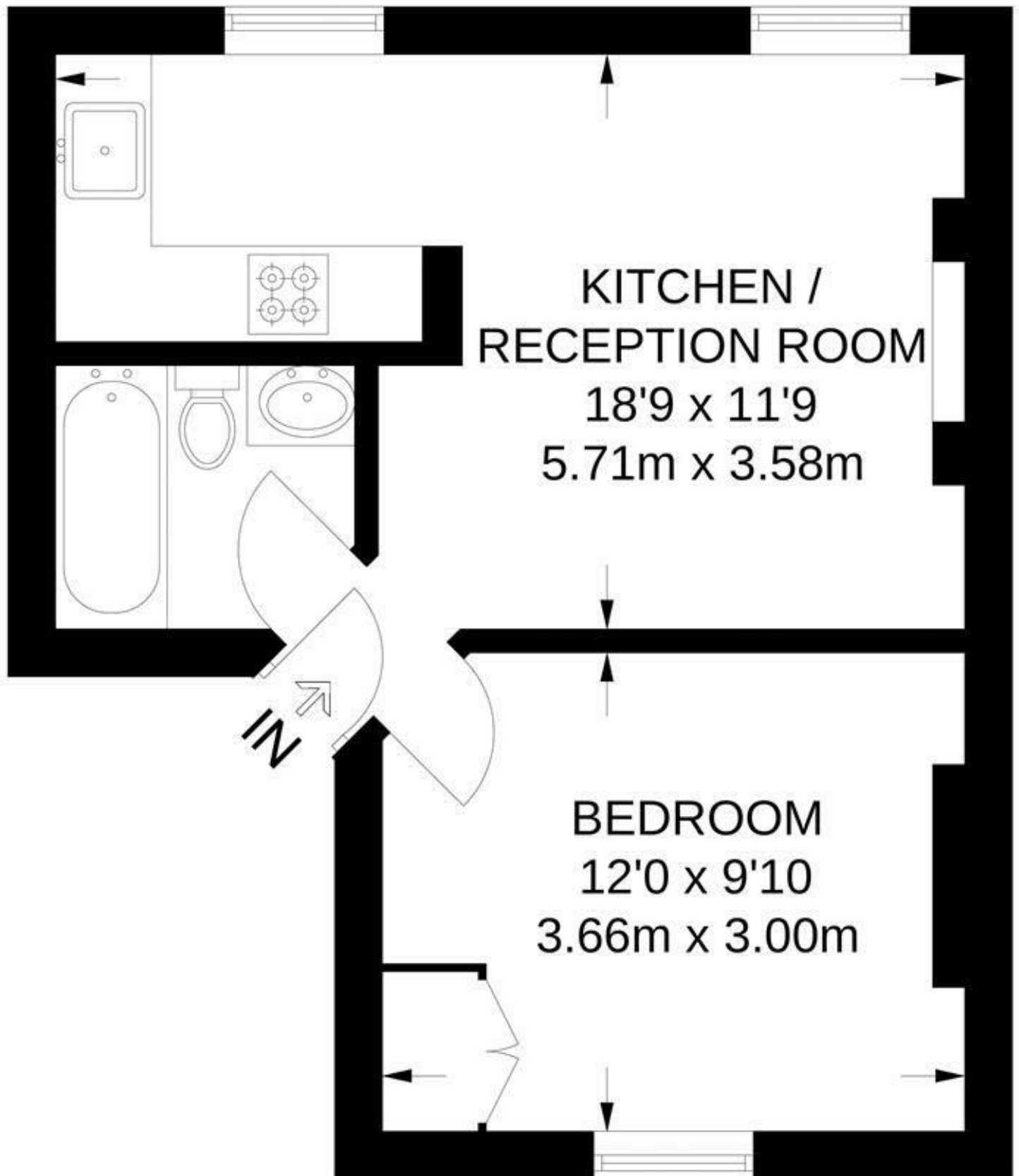


## Formosa Street, Little Venice, W9 £2,000 Per Month Furnished

An attractive apartment forming part of a converted Victorian terraced house situated in the heart of Little Venice. The property is situated on the second floor and comprises a reception room with a semi open plan fitted kitchen, double bedroom and bathroom. Formosa Street is conveniently located 0.1 miles from Warwick Avenue Underground Station (Bakerloo Line), and benefits from many boutique shops, pubs, cafes and restaurants. Clifton Road's shops and eateries are also within a short walk (0.5 miles) from the property, as is Maida Vale's picturesque canal







**FIRST FLOOR**  
**349 SQ FT / 32.4 SQ M**

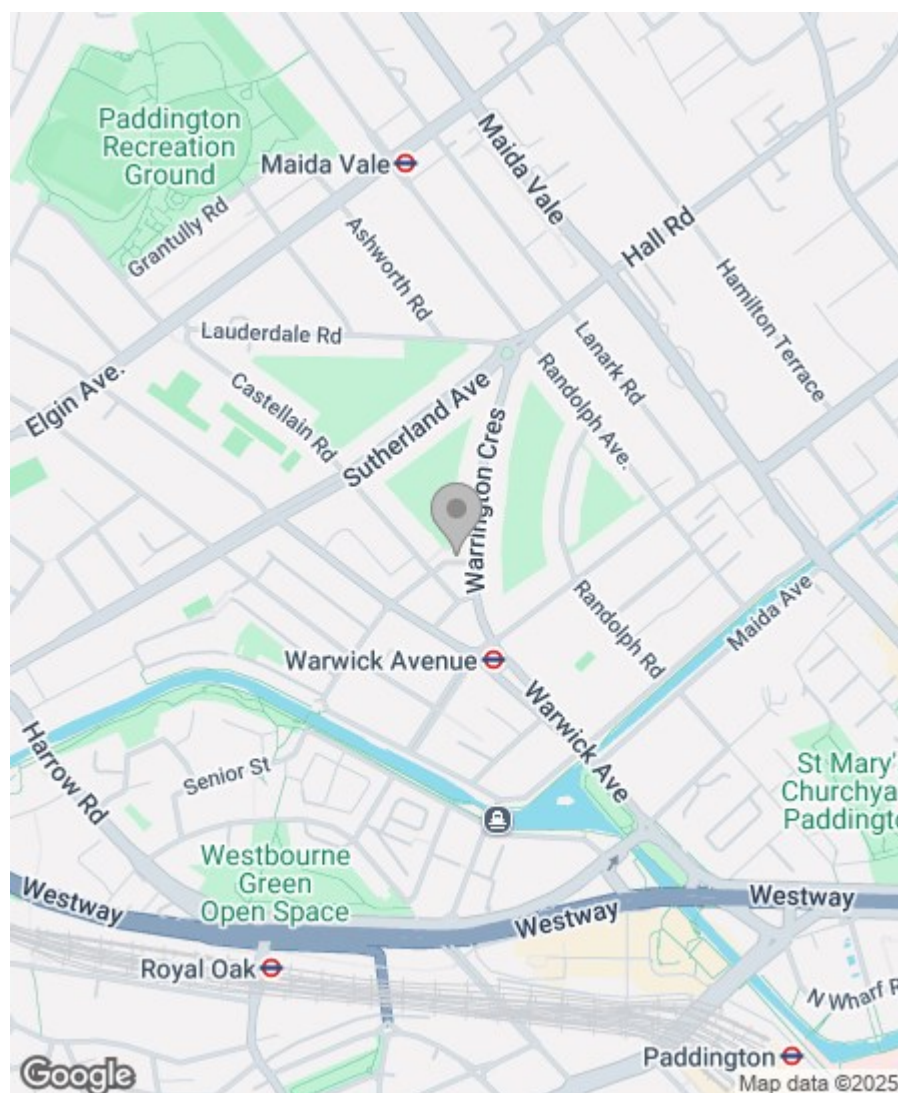
This plan has been drawn for illustrative and identification purposes only.

## Property Overview

Location	Little Venice, W9
Price	£2,000 Per Month
Bedrooms	1
Bathrooms	1
Receptions	1
Council	Westminster
Tax Band	C
Furnishing	Furnished

## Key Features

- Bright
- Semi Open Plan Kitchen
- Second Floor
- Sash Windows
- Period Conversion
- Great Location
- Close to Transport Links
- Available Now



## Energy Efficiency Rating

	Current	Potential
Very energy efficient - lower running costs		
(92 plus) <b>A</b>		
(81-91) <b>B</b>		
(69-80) <b>C</b>		
(55-68) <b>D</b>		
(39-54) <b>E</b>		
(21-38) <b>F</b>		
(1-20) <b>G</b>		
Not energy efficient - higher running costs		
	72	78
<b>England &amp; Wales</b>		EU Directive 2002/91/EC

Greenstones Estates Ltd  
Registered in England & Wales  
Registered Office:  
5 West Court, Enterprise Road,  
Maidstone, Kent ME15 6JD

Company Registered number  
03513585

Trading address  
83 Boundary Road, St John's Wood,  
London NW8 0RG

We are members of



**IMPORTANT NOTICE:** All of the information is intended only as a guide to a prospective purchaser and does not constitute any part of an offer or contract. Any measurements or distances referred to herein are approximate only. Any information contained herein (whether in the text, plans or photographs) is given in good faith and cannot be relied upon as being a statement or representation of fact. Should you proceed with the purchase of the property, your solicitor must verify these details. We have not carried out a detailed survey nor tested the services, appliances and specific fittings. In accordance with current legislation we would advise you that the measurements on these particulars are imperial. The formula for conversion to metric is as follows:- 1' (one foot) = 30.4cm (centimetres), 1m (one metre) = 3'29 (feet).