

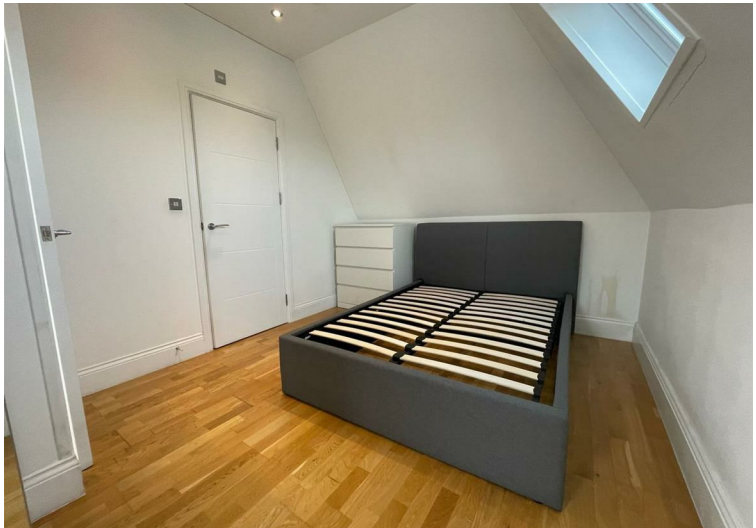
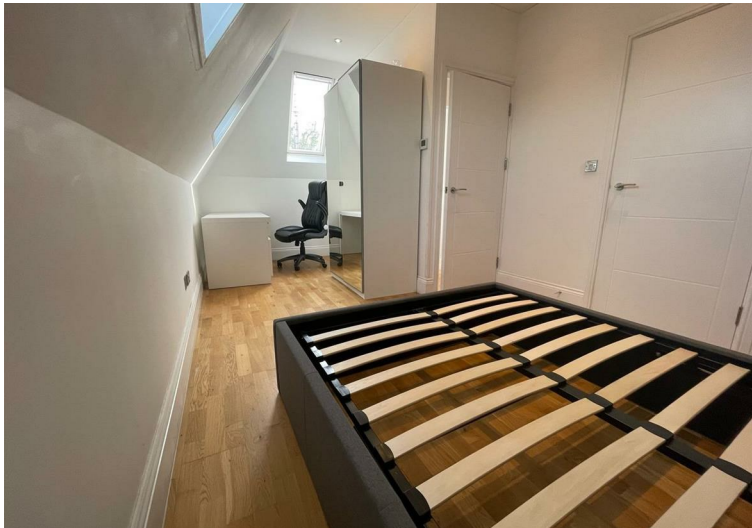


West Hampstead Mews, London, NW6 £2,600 Furnished

We are pleased to present this stunning duplex with a contemporary and spacious layout just off West Hampstead.

This duplex is situated on the first floor and includes a spacious and sociable open-plan kitchen and living area. The property includes two double bedrooms, both of which benefit from en-suite bathrooms.

Located in the heart of West Hampstead, moments away from the tube and access to many shops, cafes, bars and amenities.



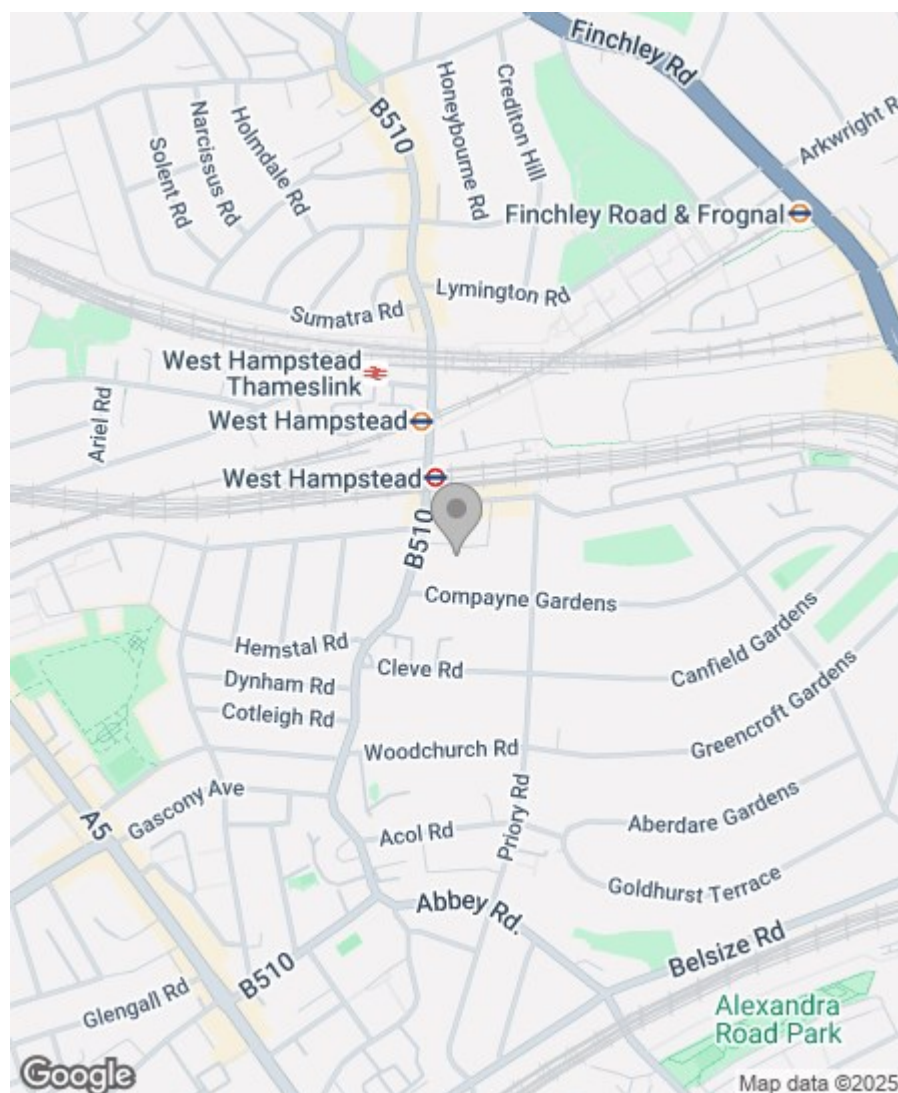
g | **AWAITING
FLOOR PLAN**

Property Overview


Location	, NW6
Price	£2,600
Bedrooms	2
Bathrooms	2
Receptions	1
Council	
Tax Band	E
Furnishing	Furnished

Key Features

- 2 Double Bedrooms
- 2 En-suites
- Duplex
- Wooden Floors Throughout
- Open Plan Kitchen
- Excellent Location



Energy Efficiency Rating

	Current	Potential
Very energy efficient - lower running costs		
(92 plus) A		
(81-91) B		
(69-80) C		
(55-68) D	57	57
(39-54) E		
(21-38) F		
(1-20) G		
Not energy efficient - higher running costs		
England & Wales	EU Directive 2002/91/EC 	

Greenstones Estates Ltd
Registered in England & Wales
Registered Office:
5 West Court, Enterprise Road,
Maidstone, Kent ME15 6JD

Company Registered number
03513585

Trading address
83 Boundary Road, St John's Wood,
London NW8 0RG

We are members of



IMPORTANT NOTICE: All of the information is intended only as a guide to a prospective purchaser and does not constitute any part of an offer or contract. Any measurements or distances referred to herein are approximate only. Any information contained herein (whether in the text, plans or photographs) is given in good faith and cannot be relied upon as being a statement or representation of fact. Should you proceed with the purchase of the property, your solicitor must verify these details. We have not carried out a detailed survey nor tested the services, appliances and specific fittings. In accordance with current legislation we would advise you that the measurements on these particulars are imperial. The formula for conversion to metric is as follows:- 1' (one foot) = 30.4cm (centimetres), 1m (one metre) = 3'29 (feet).