



## Park Road, St Johns Wood, NW8 £3,725 Per Month Furnished/unfurnished

Spacious and recently refurbished and close to Baker Street two bedroom apartment available (896 sq ft) on the ground floor 2 bedroom 1 bathroom apartment set within a ported building opposite Regents Park.

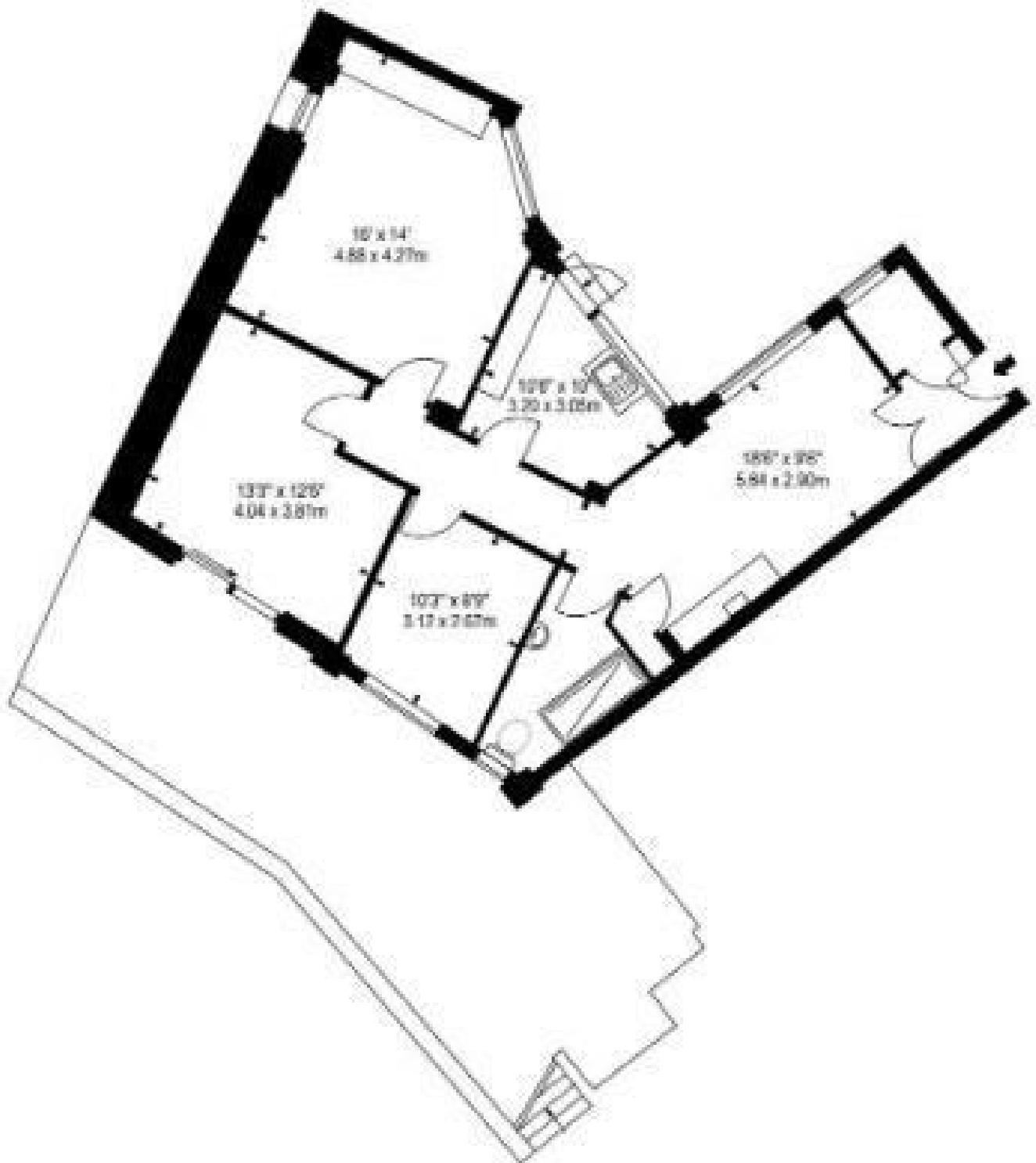
This apartment is ideally suited to young professionals or students due to its proximity to the West End, as well as a number of top colleges and universities such as the London Business School, University of Westminster and the Royal College of Physicians.

Strathmore Court is located within a 10 minute walk from St Johns Wood underground station (Jubilee Line) and Marylebone underground and overground station (Bakerloo and national railway).

Lords Cricket Ground, along with the large variety of cafés, restaurants and boutique shops in St Johns Wood are all easily accessible.







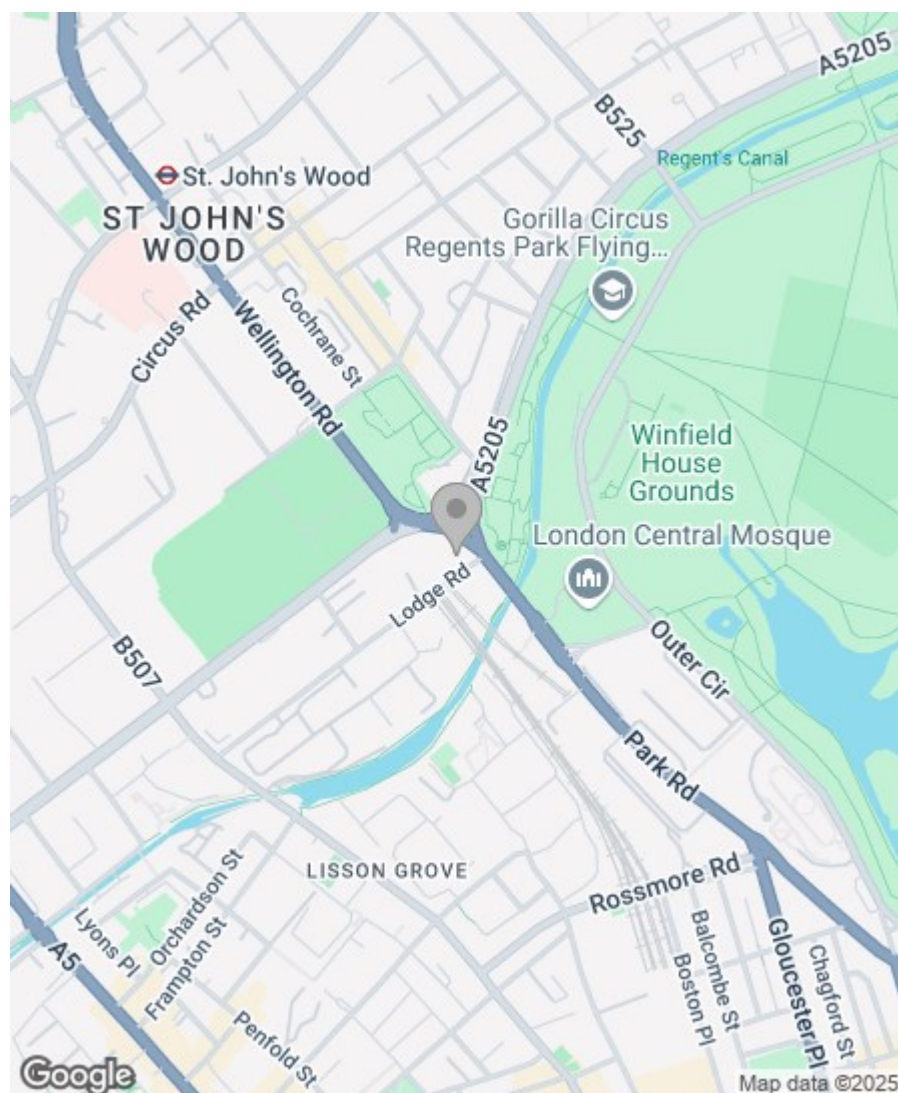


## Property Overview


Location	St Johns Wood, NW8
Price	£3,725 Per Month
Bedrooms	2
Bathrooms	1
Receptions	1
Council	
Tax Band	H
Furnishing	Furnished/unfurnished

## Key Features

- Private Patio
- Super Fast Broadband
- Opposite Regents Park
- Great location for Transport
- Close Shops
- Available Now



## Energy Efficiency Rating

	Current	Potential
Very energy efficient - lower running costs		
(92 plus) <b>A</b>		
(81-91) <b>B</b>		
(69-80) <b>C</b>		
(55-68) <b>D</b>		
(39-54) <b>E</b>		
(21-38) <b>F</b>		
(1-20) <b>G</b>		
Not energy efficient - higher running costs		
	51	74
<b>England &amp; Wales</b>	EU Directive 2002/91/EC 	

Greenstones Estates Ltd  
Registered in England & Wales  
Registered Office:  
5 West Court, Enterprise Road,  
Maidstone, Kent ME15 6JD

Company Registered number  
03513585

Trading address  
83 Boundary Road, St John's Wood,  
London NW8 0RG

We are members of



**IMPORTANT NOTICE:** All of the information is intended only as a guide to a prospective purchaser and does not constitute any part of an offer or contract. Any measurements or distances referred to herein are approximate only. Any information contained herein (whether in the text, plans or photographs) is given in good faith and cannot be relied upon as being a statement or representation of fact. Should you proceed with the purchase of the property, your solicitor must verify these details. We have not carried out a detailed survey nor tested the services, appliances and specific fittings. In accordance with current legislation we would advise you that the measurements on these particulars are imperial. The formula for conversion to metric is as follows:- 1' (one foot) = 30.4cm (centimetres), 1m (one metre) = 3'29 (feet).