

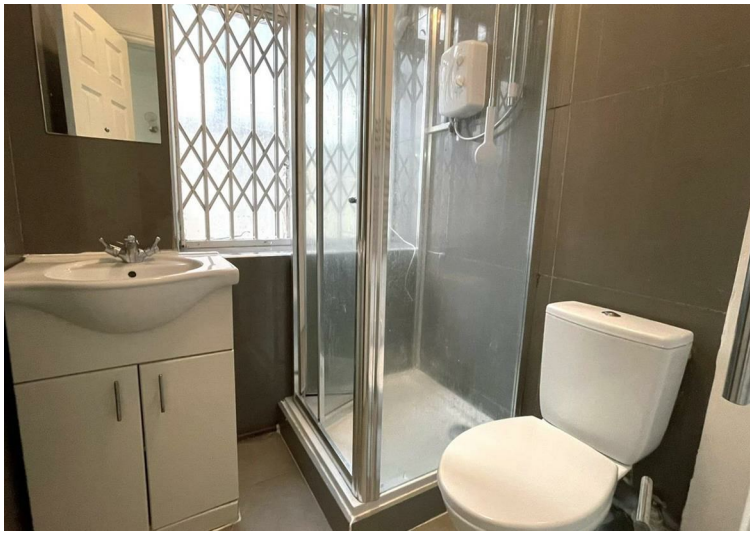
## Westbourne Gardens, W2 £1,575 Per Month Furnished/unfurnished

One bedroom apartment in this purpose built building on Westbourne Gardens.

The apartment, on the lower ground floor level comprises of an open plan living/kitchen, double bedroom and shower room.

Westbourne Gardens is in close proximity to Royal Oak (Hammersmith & City and Circle line) and Bayswater (Circle and District lines) Tube stations as well as being within a short distance from the shops and restaurants of Westbourne Grove.





**g** | **AWAITING  
FLOOR PLAN**

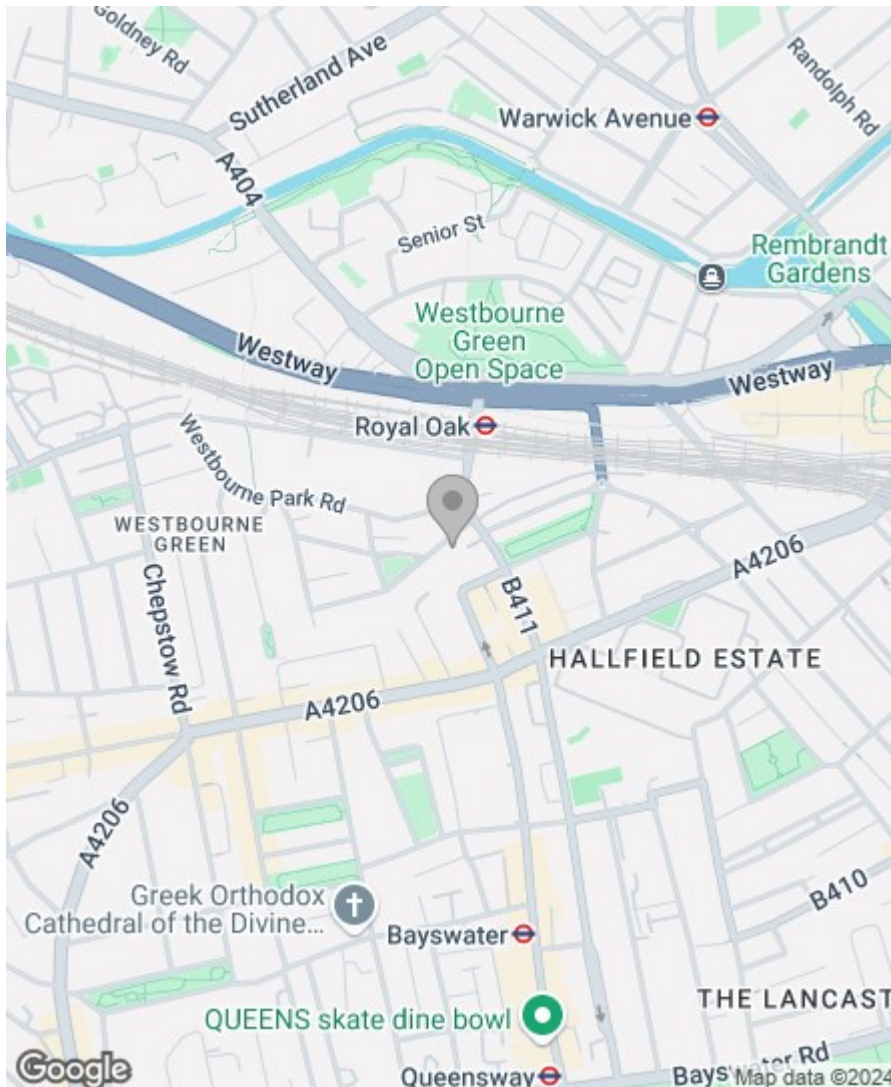


## Property Overview


Location	, W2
Price	£1,575 Per Month
Bedrooms	1
Bathrooms	1
Receptions	1
Council	
Tax Band	B
Furnishing	Furnished/unfurnished

## Key Features

- Lower Ground Floor Level
- Double Bedroom
- Shower room
- Open plan Living/Kitchen
- Great Location
- Close to Shops
- Two Minutes to Royal Oak Tube



## Energy Efficiency Rating

	Current	Potential
<i>Very energy efficient - lower running costs</i>		
(92 plus) <b>A</b>		
(81-91) <b>B</b>		
(69-80) <b>C</b>		<b>71</b>
(55-68) <b>D</b>		
(39-54) <b>E</b>	<b>45</b>	
(21-38) <b>F</b>		
(1-20) <b>G</b>		
<i>Not energy efficient - higher running costs</i>		
<b>England &amp; Wales</b>	EU Directive 2002/91/EC 	

Greenstone Estates Ltd  
Registered in England & Wales  
Registered Office:  
11 Albion Place,  
Maidstone,  
Kent ME14 5DY

Company Registered number  
03513585

Trading address  
83 Boundary Road, London NW8 0RG

We are members of



**IMPORTANT NOTICE:** All of the information is intended only as a guide to a prospective purchaser and does not constitute any part of an offer or contract. Any measurements or distances referred to herein are approximate only. Any information contained herein (whether in the text, plans or photographs) is given in good faith and cannot be relied upon as being a statement or representation of fact. Should you proceed with the purchase of the property, your solicitor must verify these details. We have not carried out a detailed survey nor tested the services, appliances and specific fittings. In accordance with current legislation we would advise you that the measurements on these particulars are imperial. The formula for conversion to metric is as follows:- 1' (one foot) = 30.4cm (centimetres), 1m (one metre) = 3'29 (feet).

