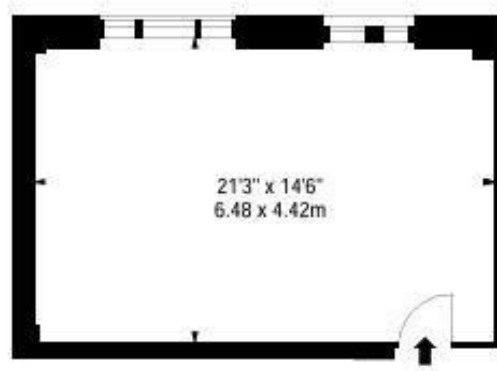




Hill Street, Mayfair, London £3,120 Per Month Furnished

A bright and spacious, modern one bedroom ground floor apartment located on one of Mayfair's most prestigious roads is now available to rent.

The apartment is set over 296 sq ft. and offers a large double bedroom, modern fitted bathroom, spacious reception room with front facing views over Hill Street, modern fitted kitchen and ample storage space and access to a private gated communal garden. 39 Hill Street, benefits from spacious living accommodation, lift service, on-site building manager, and is nestled conveniently between near Hyde Park and Green Park.



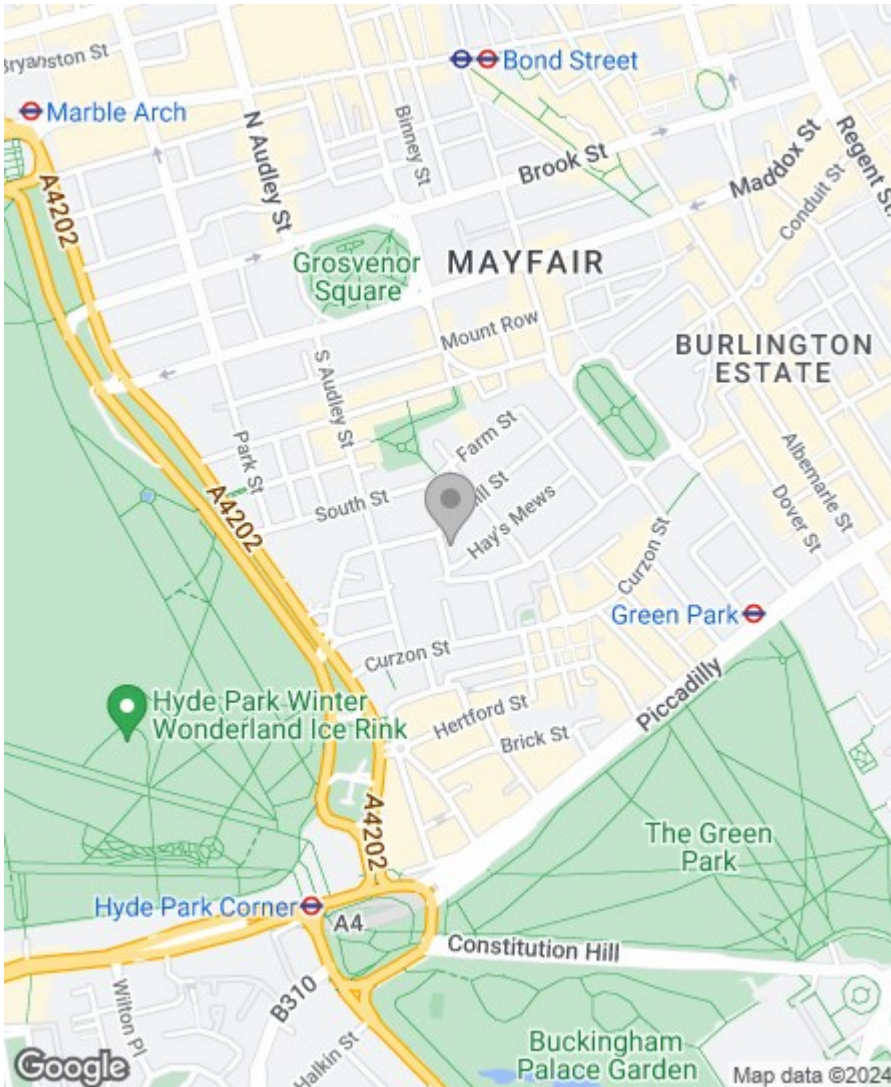
GROUND FLOOR

Property Overview

Location	Mayfair, W1J
Price	£3,120 Per Month
Bedrooms	1
Bathrooms	1
Receptions	1
Council	Westminster
Tax Band	
Furnishing	Furnished

Key Features

- Portered Block
- Refurbished
- Close to transport links
- Central Location
- Mayfair
- Furnished



Energy Efficiency Rating

	Current	Potential
Very energy efficient - lower running costs		
(92 plus) A		
(81-91) B		
(69-80) C		
(55-68) D		
(39-54) E		
(21-38) F		
(1-20) G		
Not energy efficient - higher running costs		

England & Wales

EU Directive
2002/91/EC



Environmental Impact (CO₂) Rating

	Current	Potential
Very environmentally friendly - lower CO ₂ emissions		
(92 plus) A		
(81-91) B		
(69-80) C		
(55-68) D		
(39-54) E		
(21-38) F		
(1-20) G		
Not environmentally friendly - higher CO ₂ emissions		

England & Wales

EU Directive
2002/91/EC



IMPORTANT NOTICE: All of the information is intended only as a guide to a prospective purchaser and does not constitute any part of an offer or contract. Any measurements or distances referred to herein are approximate only. Any information contained herein (whether in the text, plans or photographs) is given in good faith and cannot be relied upon as being a statement or representation of fact. Should you proceed with the purchase of the property, your solicitor must verify these details. We have not carried out a detailed survey nor tested the services, appliances and specific fittings. In accordance with current legislation we would advise you that the measurements on these particulars are imperial. The formula for conversion to metric is as follows:- 1' (one foot) = 30.4cm (centimetres), 1m (one metre) = 3'29 (feet).

