



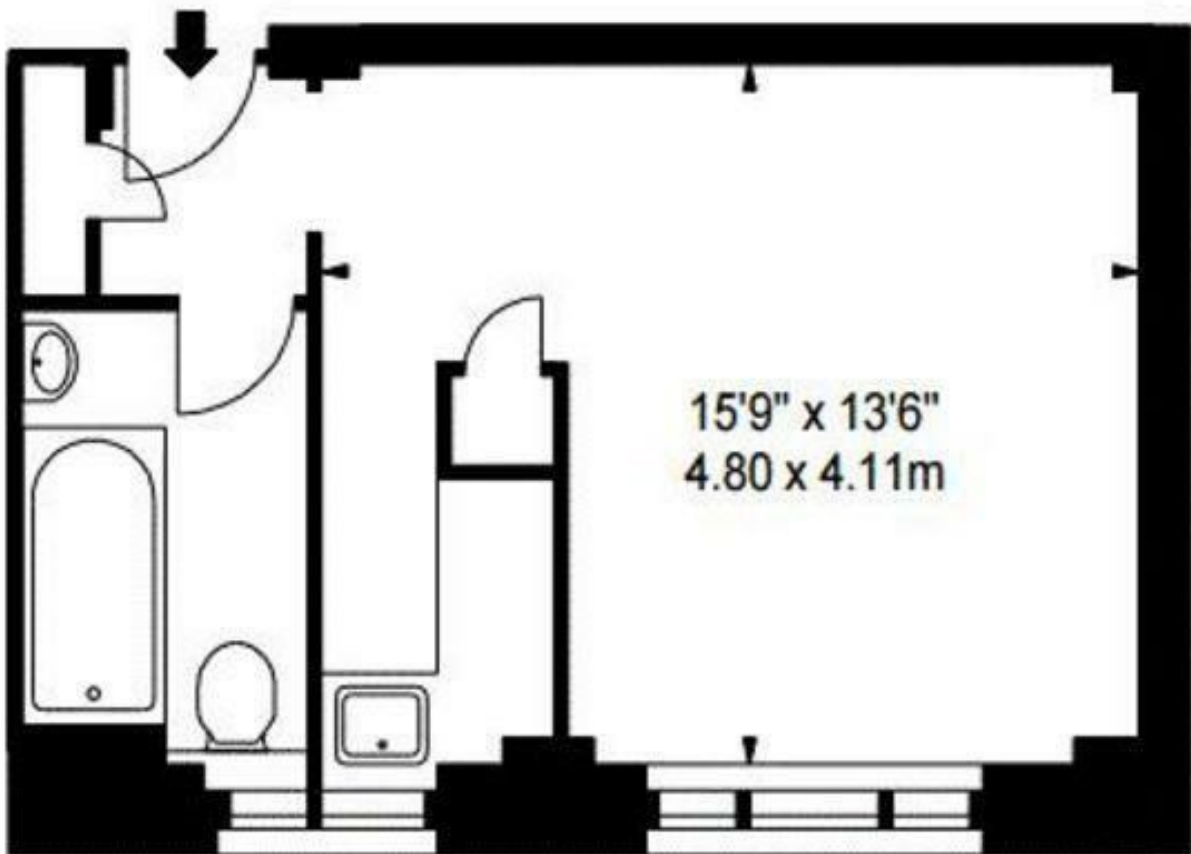
Hill Street, Mayfair, W1 £2,600 Per Month Furnished

This modern studio flat is situated on a prime residential street in London W1, the apartment comprises studio room, kitchenette and a modern bathroom. The apartment is in one of London's most prestigious locations, Mayfair. The building benefits from spacious living accommodation, lift service, on-site building manager, and is nestled conveniently between two of London's parks - Hyde Park and Green Park. London underground stations, Green Park, Bond Street and Marble Arch are all within a short stroll away.



APPROX. GROSS INTERNAL AREA *
293 Ft² - 27.22 M²

ILLUSTRATION FOR IDENTIFICATION PURPOSES ONLY. NOT TO SCALE
*** As Defined by RICS - Code of Measuring Practice**



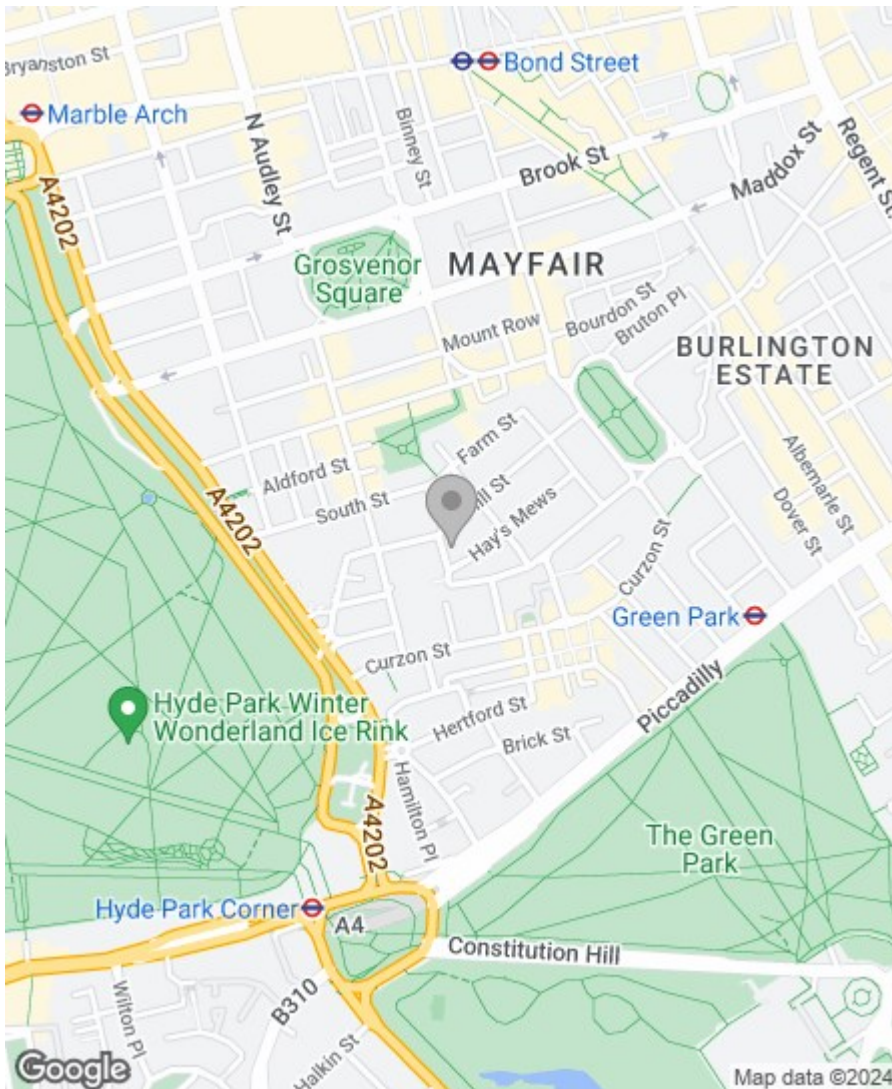
SECOND FLOOR

Property Overview

Location	Mayfair, W1J
Price	£2,600 Per Month
Bedrooms	0
Bathrooms	1
Receptions	1
Council	Westminster
Tax Band	E
Furnishing	Furnished

Key Features

- Large Studio Apartment
- Good Sized Kitchen
- Modern Bathroom
- Plenty of Local amenities
- Lots of TransportLinks
- Great Location
- Close to Transport Links



Energy Efficiency Rating

	Current	Potential
Very energy efficient - lower running costs		
(92 plus) A		
(81-91) B		
(69-80) C	72	79
(55-68) D		
(39-54) E		
(21-38) F		
(1-20) G		
Not energy efficient - higher running costs		

England & Wales

EU Directive
2002/91/EC



Environmental Impact (CO₂) Rating

	Current	Potential
Very environmentally friendly - lower CO ₂ emissions		
(92 plus) A		
(81-91) B		
(69-80) C	72	86
(55-68) D		
(39-54) E		
(21-38) F		
(1-20) G		
Not environmentally friendly - higher CO ₂ emissions		

England & Wales

EU Directive
2002/91/EC



IMPORTANT NOTICE: All of the information is intended only as a guide to a prospective purchaser and does not constitute any part of an offer or contract. Any measurements or distances referred to herein are approximate only. Any information contained herein (whether in the text, plans or photographs) is given in good faith and cannot be relied upon as being a statement or representation of fact. Should you proceed with the purchase of the property, your solicitor must verify these details. We have not carried out a detailed survey nor tested the services, appliances and specific fittings. In accordance with current legislation we would advise you that the measurements on these particulars are imperial. The formula for conversion to metric is as follows:- 1' (one foot) = 30.4cm (centimetres), 1m (one metre) = 3'29 (feet).

